

WOCHENBERICHT

SPEICHERINHALT

MITGETEILT VOM BUNDESAMT FÜR ENERGIE.


DIE NACHSTEHENDEN ANGABEN BEZIEHEN SICH SOWOHL AUF DIE ERZEUGUNG DER ELEKTRIZITÄTWERKE DER ALLGEMEINVERSORGUNG WIE DER BAHN- UND INDUSTRIEEIGENEN KRAFTWERKE (SELBSTPRODUZENTEN)

BULLETIN HEBDOMADAIRE

CONTENU DES BASSINS D'ACCUMULATION

COMMUNICATION DE L'OFFICE FEDERAL DE L'ENERGIE.

LES CHIFFRES CI-DESSOUS CONCERNENT A LA FOIS LES ENTREPRISES D'ELECTRICITE LIVRANT A DES TIERS ET LES CENTRALES DES ENTREPRISES FERROVIAIRES ET INDUSTRIELLES (AUTOPRODUCTEURS)

| 2004  | Speicherinhalt - Contenu des bassins d'accumulation | | | | | | | | | | Rhein in Rheinfelden - Rhin à Rheinfelden | | |
|---|---|-------|----------------------|-------|-----------------|-------|----------------------|-------|-----------------------|--------------|---|--|------|
| | Wallis - Valais | | Graubünden - Grisons | | Tessin - Tessin | | Übrige CH - Reste CH | | Total Schweiz- Suisse | | Interpolierter Mittelwert Moyenne interpolée m³/s / 1935-2002 | Aufgetretene Wasserführung Débit effective m³/s / 12:00h | |
| | GWh 3755 | % | GWh 1'960 | % | GWh 1'225 | % | GWh 1'600 | % | GWh 8'540 | % | | | % |
| Montag / Lundi 00:00h | | | | | | | | | | | | | |
| 05.01.2004 | 1'991 | 52.7% | 1'192 | 60.8% | 671 | 54.8% | 1'064 | 66.5% | 4'918 | 57.6% | 790 | 446 | 56% |
| 12.01.2004 | 1'869 | 49.8% | 1'160 | 59.2% | 631 | 51.5% | 996 | 62.3% | 4'656 | 54.5% | 780 | 1'238 | 159% |
| 19.01.2004 | 1'793 | 47.7% | 1'155 | 58.9% | 604 | 49.3% | 1'030 | 64.4% | 4'582 | 53.7% | 782 | 1'460 | 187% |
| 26.01.2004 | 1'654 | 44.0% | 1'099 | 56.1% | 560 | 45.7% | 960 | 60.0% | 4'273 | 50.0% | 795 | 981 | 123% |
| 02.02.2004 | 1'505 | 40.1% | 1'026 | 52.3% | 528 | 43.1% | 881 | 55.1% | 3'940 | 46.1% | 808 | 885 | 110% |
| 09.02.2004 | 1'400 | 37.3% | 1'010 | 51.5% | 509 | 41.6% | 859 | 53.7% | 3'778 | 44.2% | 821 | 952 | 116% |
| 16.02.2004 | 1'264 | 33.7% | 967 | 49.3% | 478 | 39.0% | 808 | 50.5% | 3'517 | 41.2% | 834 | 702 | 84% |
| 23.02.2004 | 1'122 | 29.9% | 911 | 46.5% | 447 | 36.5% | 755 | 47.2% | 3'235 | 37.9% | 846 | 765 | 90% |
| 01.03.2004 | 962 | 25.6% | 827 | 42.2% | 411 | 33.6% | 683 | 42.7% | 2'883 | 33.8% | 858 | 592 | 69% |
| 08.03.2004 | 811 | 21.6% | 731 | 37.3% | 354 | 28.9% | 579 | 36.2% | 2'475 | 29.0% | 870 | 646 | 74% |
| 15.03.2004 | 656 | 17.5% | 637 | 32.5% | 301 | 24.6% | 501 | 31.3% | 2'095 | 24.5% | 882 | 683 | 77% |
| 22.03.2004 | 566 | 15.1% | 595 | 30.4% | 272 | 22.2% | 510 | 31.9% | 1'943 | 22.8% | 916 | 974 | 106% |
| 29.03.2004 | 446 | 11.9% | 525 | 26.8% | 229 | 18.7% | 478 | 29.9% | 1'678 | 19.6% | 949 | 797 | 84% |
| 05.04.2004 | 373 | 9.9% | 504 | 25.7% | 206 | 16.8% | 477 | 29.8% | 1'560 | 18.3% | 983 | 797 | 81% |
| 12.04.2004 | 331 | 8.8% | 477 | 24.3% | 179 | 14.6% | 446 | 27.9% | 1'433 | 16.8% | 1'017 | 891 | 88% |
| 19.04.2004 | 296 | 7.9% | 457 | 23.3% | 171 | 14.0% | 432 | 27.0% | 1'356 | 15.9% | 1'061 | 797 | 75% |
| 26.04.2004 | 275 | 7.3% | 444 | 22.7% | 176 | 14.4% | 451 | 28.2% | 1'346 | 15.8% | 1'114 | 885 | 79% |
| 03.05.2004 | 278 | 7.4% | 454 | 23.2% | 183 | 14.9% | 461 | 28.8% | 1'375 | 16.1% | 1'167 | 912 | 78% |
| 10.05.2004 | 256 | 6.8% | 422 | 21.5% | 197 | 16.1% | 440 | 27.5% | 1'315 | 15.4% | 1'220 | 1'413 | 116% |
| 17.05.2004 | 241 | 6.4% | 390 | 19.9% | 199 | 16.2% | 431 | 26.9% | 1'261 | 14.8% | 1'274 | 925 | 73% |
| 24.05.2004 | 318 | 8.5% | 472 | 24.1% | 258 | 21.1% | 506 | 31.6% | 1'554 | 18.2% | 1'330 | 1'107 | 83% |
| 31.05.2004 | 365 | 9.7% | 516 | 26.3% | 301 | 24.7% | 514 | 32.1% | 1'696 | 19.9% | 1'387 | 1'026 | 74% |
| 07.06.2004 | 457 | 12.2% | 573 | 29.2% | 375 | 30.6% | 642 | 40.1% | 2'047 | 24.0% | 1'443 | 1'820 | 126% |
| 14.06.2004 | 607 | 16.2% | 724 | 36.9% | 487 | 39.8% | 758 | 47.4% | 2'576 | 30.2% | 1'499 | 1'670 | 111% |
| 21.06.2004 | 772 | 20.6% | 820 | 41.8% | 545 | 44.5% | 794 | 49.6% | 2'931 | 34.3% | 1'493 | 1'405 | 94% |
| 28.06.2004 | 907 | 24.2% | 915 | 46.7% | 610 | 49.8% | 835 | 52.2% | 3'267 | 38.3% | 1'477 | 1'114 | 75% |

WOCHENBERICHT

SPEICHERINHALT

MITGETEILT VOM BUNDESAMT FÜR ENERGIE.


DIE NACHSTEHENDEN ANGABEN BEZIEHEN SICH SOWOHL AUF DIE ERZEUGUNG DER ELEKTRIZITÄTWERKE DER ALLGEMEINVERSORGUNG WIE DER BAHN- UND INDUSTRIEEIGENEN KRAFTWERKE (SELBSTPRODUZENTEN)

BULLETIN HEBDOMADAIRE

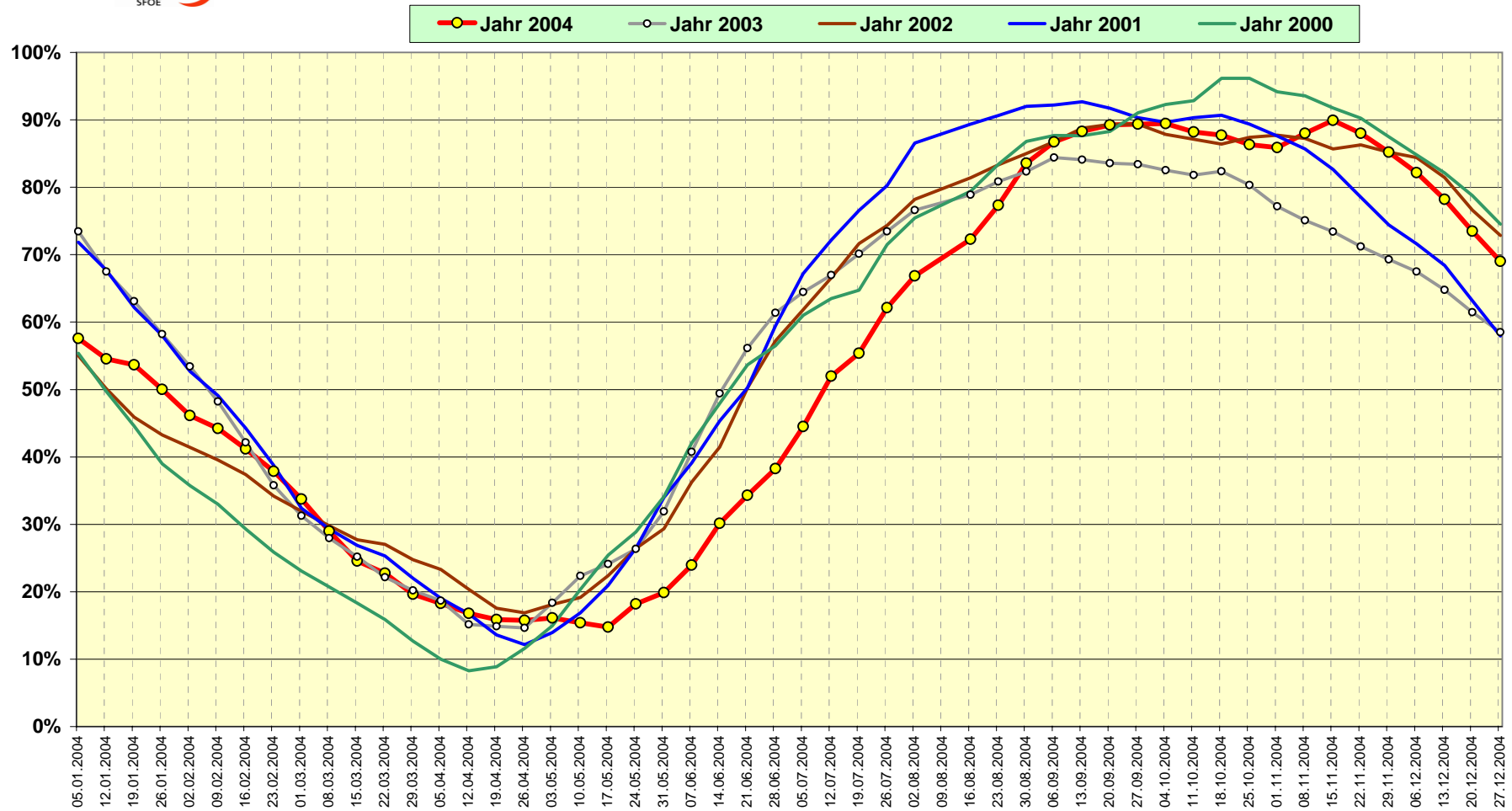
CONTENU DES BASSINS D'ACCUMULATION

COMMUNICATION DE L'OFFICE FEDERAL DE L'ENERGIE.

LES CHIFFRES CI-DESSOUS CONCERNENT A LA FOIS LES ENTREPRISES D'ELECTRICITE LIVRANT A DES TIERS ET LES CENTRALES DES ENTREPRISES FERROVIAIRES ET INDUSTRIELLES (AUTOPRODUCTEURS)

| 2004  | Speicherinhalt - Contenu des bassins d'accumulation | | | | | | | | | | Rhein in Rheinfelden - Rhin à Rheinfelden | | |
|---|---|-------|----------------------|-------|-----------------|-------|----------------------|-------|-----------------------|--------------|---|---|------|
| | Wallis - Valais | | Graubünden - Grisons | | Tessin - Tessin | | Übrige CH - Reste CH | | Total Schweiz- Suisse | | Interpolierter Mittelwert Moyenne interpolée | Aufgetretene Wasserführung Débit effective | |
| | GWh 3'755 | % | GWh 1'960 | % | GWh 1'225 | % | GWh 1'600 | % | GWh 8'540 | % | m³/s / 1935-2002 | m³/s / 12:00h | % |
| Montag / Lundi 00:00h | | | | | | | | | | | | | |
| 05.07.2004 | 1'184 | 31.5% | 1'036 | 52.9% | 679 | 55.4% | 901 | 56.3% | 3'800 | 44.5% | 1'461 | 1'100 | 75% |
| 12.07.2004 | 1'449 | 38.6% | 1'201 | 61.3% | 792 | 64.7% | 998 | 62.4% | 4'440 | 52.0% | 1'445 | 1'309 | 91% |
| 19.07.2004 | 1'612 | 42.9% | 1'270 | 64.8% | 822 | 67.1% | 1'025 | 64.1% | 4'729 | 55.4% | 1'408 | 1'055 | 75% |
| 26.07.2004 | 1'941 | 51.7% | 1'360 | 69.4% | 860 | 70.2% | 1'146 | 71.6% | 5'307 | 62.1% | 1'355 | 1'198 | 88% |
| 02.08.2004 | 2'204 | 58.7% | 1'414 | 72.1% | 876 | 71.5% | 1'214 | 75.9% | 5'708 | 66.8% | 1'303 | 966 | 74% |
| 09.08.2004 | 2'520 | 67.1% | 1'452 | 74.1% | 925 | 75.5% | 1'277 | 79.8% | 6'174 | 72.3% | 1'250 | 864 | 69% |
| 16.08.2004 | 2'803 | 74.6% | 1'479 | 75.5% | 971 | 79.3% | 1'351 | 84.4% | 6'604 | 77.3% | 1'199 | 885 | 74% |
| 23.08.2004 | 3'070 | 81.8% | 1'590 | 81.1% | 1'066 | 87.0% | 1'412 | 88.3% | 7'138 | 83.6% | 1'158 | 959 | 83% |
| 30.08.2004 | 3'253 | 86.6% | 1'635 | 83.4% | 1'076 | 87.8% | 1'444 | 90.3% | 7'408 | 86.7% | 1'117 | 1'214 | 109% |
| 06.09.2004 | 3'386 | 90.2% | 1'653 | 84.3% | 1'068 | 87.2% | 1'432 | 89.5% | 7'539 | 88.3% | 1'076 | 864 | 80% |
| 13.09.2004 | 3'487 | 92.9% | 1'640 | 83.7% | 1'045 | 85.3% | 1'450 | 90.6% | 7'622 | 89.3% | 1'035 | 696 | 67% |
| 20.09.2004 | 3'510 | 93.5% | 1'634 | 83.4% | 1'042 | 85.1% | 1'447 | 90.4% | 7'633 | 89.4% | 997 | 633 | 63% |
| 27.09.2004 | 3'526 | 93.9% | 1'615 | 82.4% | 1'030 | 84.1% | 1'466 | 91.6% | 7'637 | 89.4% | 961 | 925 | 96% |
| 04.10.2004 | 3'475 | 92.5% | 1'600 | 81.6% | 1'014 | 82.8% | 1'445 | 90.3% | 7'534 | 88.2% | 925 | 709 | 77% |
| 11.10.2004 | 3'449 | 91.9% | 1'610 | 82.1% | 998 | 81.5% | 1'435 | 89.7% | 7'492 | 87.7% | 889 | 858 | 97% |
| 18.10.2004 | 3'378 | 90.0% | 1'604 | 81.8% | 978 | 79.8% | 1'413 | 88.3% | 7'373 | 86.3% | 865 | 790 | 91% |
| 25.10.2004 | 3'329 | 88.7% | 1'616 | 82.4% | 972 | 79.3% | 1'419 | 88.7% | 7'336 | 85.9% | 860 | 734 | 85% |
| 01.11.2004 | 3'287 | 87.5% | 1'714 | 87.4% | 1'067 | 87.1% | 1'446 | 90.4% | 7'514 | 88.0% | 854 | 885 | 104% |
| 08.11.2004 | 3'297 | 87.8% | 1'795 | 91.6% | 1'125 | 91.8% | 1'463 | 91.4% | 7'680 | 89.9% | 848 | 746 | 88% |
| 15.11.2004 | 3'211 | 85.5% | 1'779 | 90.8% | 1'097 | 89.6% | 1'428 | 89.3% | 7'515 | 88.0% | 842 | 562 | 67% |
| 22.11.2004 | 3'106 | 82.7% | 1'743 | 88.9% | 1'047 | 85.5% | 1'382 | 86.4% | 7'278 | 85.2% | 837 | 556 | 66% |
| 29.11.2004 | 2'985 | 79.5% | 1'696 | 86.5% | 997 | 81.4% | 1'338 | 83.6% | 7'016 | 82.2% | 833 | 574 | 69% |
| 06.12.2004 | 2'847 | 75.8% | 1'623 | 82.8% | 922 | 75.3% | 1'287 | 80.4% | 6'679 | 78.2% | 828 | 521 | 63% |
| 13.12.2004 | 2'686 | 71.5% | 1'524 | 77.8% | 847 | 69.1% | 1'218 | 76.1% | 6'275 | 73.5% | 823 | 497 | 60% |
| 20.12.2004 | 2'540 | 67.6% | 1'438 | 73.4% | 768 | 62.7% | 1'146 | 71.6% | 5'892 | 69.0% | 814 | 658 | 81% |
| 27.12.2004 | 2'456 | 65.4% | 1'407 | 71.8% | 731 | 59.7% | 1'143 | 71.4% | 5'737 | 67.2% | 804 | 621 | 77% |

Speicherinhalt Schweiz (100% = 8'540 GWh)



Verlauf des Speicherinhalts 2003/2004 (Stand Ende Monat) (Schwankungsbreite hoch / tief 1972/73 bis 2002/03)

100% = 8'540GWh

