

Speicherinhalt Schweiz in GWh (Speicher Vermögen ab 1.08.2000 100% = 8'560 GWh)

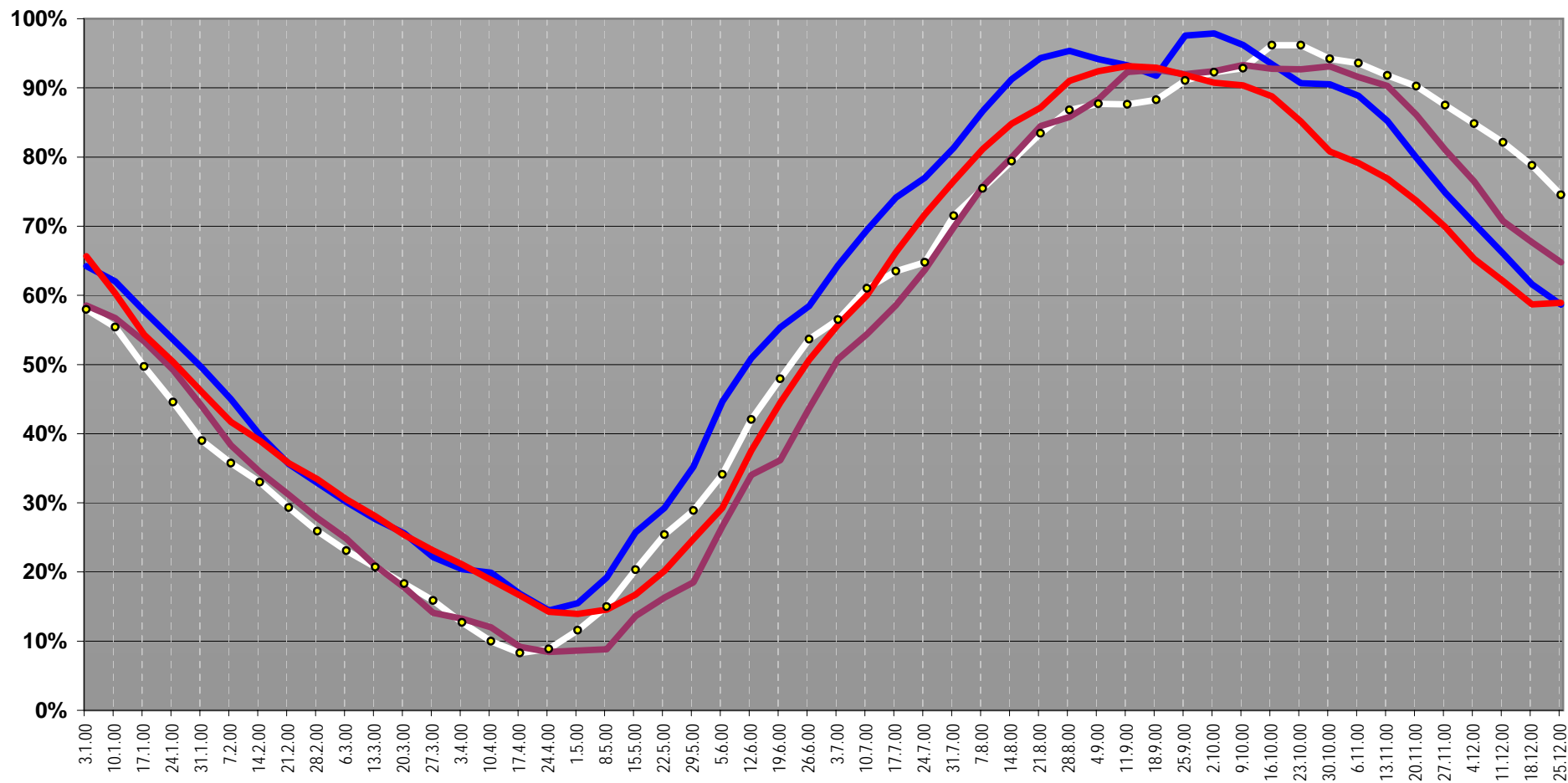
Speicher Vermögen	Wallis		Graubünden		Tessin		übrige Schweiz		100%=8'500 GWh, ab 1.08.00 100%=8'560 GWh			100%=8'500	100%=8'500 ab 1.4.	100%=8'435	2000 gegenüber \
	3'775	in %	1'960	in %	1'225	in %	1'600	in %	Jahr 2000	Jahr 1999	Jahr 2000	Jahr 1999	Jahr 1998	Jahr 1997	GWh
Datum															
3.1.00	2'037	54.0%	1'226	64.4%	758	61.9%	904	56.5%	4'925	5'458	57.9%	64.2%	58.5%	65.7%	-533
10.1.00	1'945	51.6%	1'175	61.7%	720	58.8%	868	54.3%	4'708	5'271	55.4%	62.0%	56.7%	60.3%	-563
17.1.00	1'733	46.0%	1'063	55.8%	651	53.1%	777	48.6%	4'224	4'907	49.7%	57.7%	53.4%	54.3%	-683
24.1.00	1'584	42.0%	940	49.3%	591	48.2%	674	42.1%	3'789	4'559	44.6%	53.6%	49.2%	50.3%	-770
31.1.00	1'414	37.5%	803	42.2%	517	42.2%	581	36.3%	3'315	4'208	39.0%	49.5%	44.0%	46.0%	-893
7.2.00	1'285	34.1%	720	37.8%	466	38.0%	568	35.5%	3'039	3'825	35.8%	45.0%	38.3%	41.7%	-786
14.2.00	1'200	31.8%	623	32.7%	422	34.4%	560	35.0%	2'805	3'384	33.0%	39.8%	34.5%	39.0%	-579
21.2.00	1'074	28.5%	526	27.6%	366	29.9%	525	32.8%	2'491	3'029	29.3%	35.6%	31.2%	35.7%	-538
28.2.00	950	25.2%	437	22.9%	334	27.3%	479	29.9%	2'200	2'793	25.9%	32.9%	27.8%	33.4%	-593
6.3.00	831	22.0%	382	20.1%	302	24.7%	446	27.9%	1'961	2'559	23.1%	30.1%	24.8%	30.5%	-598
13.3.00	722	19.2%	335	17.6%	272	22.2%	431	26.9%	1'760	2'351	20.7%	27.7%	20.9%	28.1%	-591
20.3.00	638	16.9%	289	15.2%	238	19.4%	390	24.4%	1'555	2'175	18.3%	25.6%	17.8%	25.4%	-620
27.3.00	539	14.3%	246	12.9%	203	16.6%	361	22.6%	1'349	1'881	15.9%	22.1%	14.1%	23.1%	-532
3.4.00	413	11.0%	184	9.7%	164	13.4%	318	19.9%	1'079	1'735	12.7%	20.4%	13.2%	21.1%	-656
10.4.00	302	8.0%	140	7.3%	129	10.5%	279	17.4%	850	1'690	10.0%	19.9%	12.0%	18.9%	-840
17.4.00	218	5.8%	118	6.2%	115	9.4%	252	15.8%	703	1'433	8.3%	16.9%	9.2%	16.6%	-730
24.4.00	215	5.7%	123	6.5%	128	10.4%	288	18.0%	754	1'228	8.9%	14.4%	8.4%	14.2%	-474
1.5.00	234	6.2%	209	11.0%	169	13.8%	372	23.3%	984	1'315	11.6%	15.5%	8.6%	13.9%	-331
8.5.00	261	6.9%	334	17.5%	229	18.7%	448	28.0%	1'272	1'631	15.0%	19.2%	8.8%	14.6%	-359
15.5.00	365	9.7%	505	26.5%	325	26.5%	534	33.4%	1'729	2'187	20.3%	25.7%	13.6%	16.7%	-458
22.5.00	519	13.8%	651	34.2%	403	32.9%	587	36.7%	2'160	2'487	25.4%	29.3%	16.3%	20.2%	-327
29.5.00	644	17.1%	761	39.9%	455	37.1%	594	37.1%	2'454	2'993	28.9%	35.2%	18.5%	24.8%	-539
5.6.00	809	21.5%	880	46.2%	534	43.6%	675	42.2%	2'898	3'793	34.1%	44.6%	26.6%	29.3%	-895
12.6.00	1'118	29.7%	1'028	54.0%	654	53.4%	774	48.4%	3'574	4'327	42.0%	50.9%	34.0%	37.5%	-753
19.6.00	1'324	35.1%	1'136	59.6%	756	61.7%	858	53.6%	4'074	4'707	47.9%	55.4%	36.2%	44.5%	-633
26.6.00	1'603	42.5%	1'210	63.5%	816	66.6%	933	58.3%	4'562	4'970	53.7%	58.5%	43.7%	50.7%	-408
3.7.00	1'790	47.5%	1'227	64.4%	830	67.8%	954	59.6%	4'801	5'470	56.5%	64.4%	50.8%	55.8%	-669
10.7.00	2'027	53.8%	1'287	67.6%	844	68.9%	1'029	64.3%	5'187	5'902	61.0%	69.4%	54.4%	60.0%	-715
17.7.00	2'103	55.8%	1'329	69.8%	859	70.1%	1'106	69.1%	5'397	6'302	63.5%	74.1%	58.6%	66.3%	-905
24.7.00	2'189	58.1%	1'342	70.4%	866	70.7%	1'107	69.2%	5'504	6'544	64.8%	77.0%	63.7%	71.7%	-1'040
31.7.00	2'445	64.9%	1'486	78.0%	942	76.9%	1'204	75.3%	6'077	6'913	71.5%	81.3%	69.8%	76.6%	-836
7.8.00	2'644	70.0%	1'585	80.9%	961	78.4%	1'268	79.3%	6'458	7'364	75.4%	86.6%	75.7%	81.1%	-906
14.8.00	2'847	75.4%	1'650	84.2%	972	79.4%	1'329	83.1%	6'798	7'757	79.4%	91.3%	80.0%	84.8%	-959
21.8.00	3'121	82.7%	1'661	84.7%	980	80.0%	1'378	86.1%	7'140	8'017	83.4%	94.3%	84.5%	87.1%	-877
28.8.00	3'358	89.0%	1'677	85.6%	988	80.7%	1'406	87.9%	7'429	8'105	86.8%	95.4%	85.8%	91.0%	-676
4.9.00	3'423	90.7%	1'670	85.2%	991	80.9%	1'422	88.9%	7'506	8'002	87.7%	94.1%	88.4%	92.4%	-496
11.9.00	3'439	91.1%	1'651	84.2%	981	80.1%	1'430	89.4%	7'501	7'928	87.6%	93.3%	92.3%	93.2%	-427
18.9.00	3'515	93.1%	1'640	83.7%	975	79.6%	1'427	89.2%	7'557	7'800	88.3%	91.8%	92.6%	92.9%	-243
25.9.00	3'559	94.3%	1'710	87.2%	1'040	84.9%	1'484	92.8%	7'793	8'294	91.0%	97.6%	92.0%	91.9%	-501
2.10.00	3'571	94.6%	1'743	88.9%	1'106	90.3%	1'478	92.4%	7'898	8'318	92.3%	97.9%	92.4%	90.7%	-420
9.10.00	3'572	94.6%	1'784	91.0%	1'126	91.9%	1'465	91.6%	7'947	8'179	92.8%	96.2%	93.3%	90.4%	-232
16.10.00	3'610	95.6%	1'904	97.1%	1'188	97.0%	1'529	95.6%	8'231	7'941	96.2%	93.4%	92.7%	88.8%	290
23.10.00	3'637	96.3%	1'915	97.7%	1'177	96.1%	1'502	93.9%	8'231	7'707	96.2%	90.7%	92.7%	85.1%	524
30.10.00	3'538	93.7%	1'891	96.5%	1'164	95.0%	1'469	91.8%	8'062	7'693	94.2%	90.5%	93.1%	80.8%	369
6.11.00	3'470	91.9%	1'909	97.4%	1'171	95.6%	1'459	91.2%	8'009	7'553	93.6%	88.9%	91.6%	79.1%	456
13.11.00	3'385	89.7%	1'902	97.0%	1'144	93.4%	1'425	89.1%	7'856	7'244	91.8%	85.2%	90.3%	76.9%	612
20.11.00	3'270	86.6%	1'922	98.1%	1'138	98.1%	1'395	87.2%	7'725	6'792	90.2%	79.9%	86.1%	73.7%	933
27.11.00	3'146	83.3%	1'877	95.8%	1'104	90.1%	1'361	85.1%	7'488	6'362	87.5%	74.8%	81.0%	69.9%	1'126
4.12.00	3'040	80.5%	1'827	93.2%	1'069	87.3%	1'324	82.8%	7'260	5'983	84.8%	70.4%	76.5%	65.3%	1'277
11.12.00	2'936	77.8%	1'775	90.6%	1'043	85.1%	1'275	79.7%	7'029	5'615	82.1%	66.1%	70.7%	62.1%	1'414
18.12.00	2'828	74.9%	1'699	86.7%	997	81.4%	1'219	76.2%	6'743	5'234	78.8%	61.6%	67.7%	58.7%	1'509
25.12.00	2'704	71.6%	1'609	82.1%	938	76.6%	1'128	70.5%	6'379	4'986	74.5%	58.7%	64.8%	58.9%	1'393

Korrigierte Werte



Speicherinhalt Schweiz 100%=8560 GWh ab 1.8.2000

● Jahr 2000
 — Jahr 1999
 — Jahr 1998
 — Jahr 1997



Verlauf des Speicherinhalts 1999/2000 (Stand Ende Monat) (Schwankungsbreite 1973/74 bis 1999/00)

