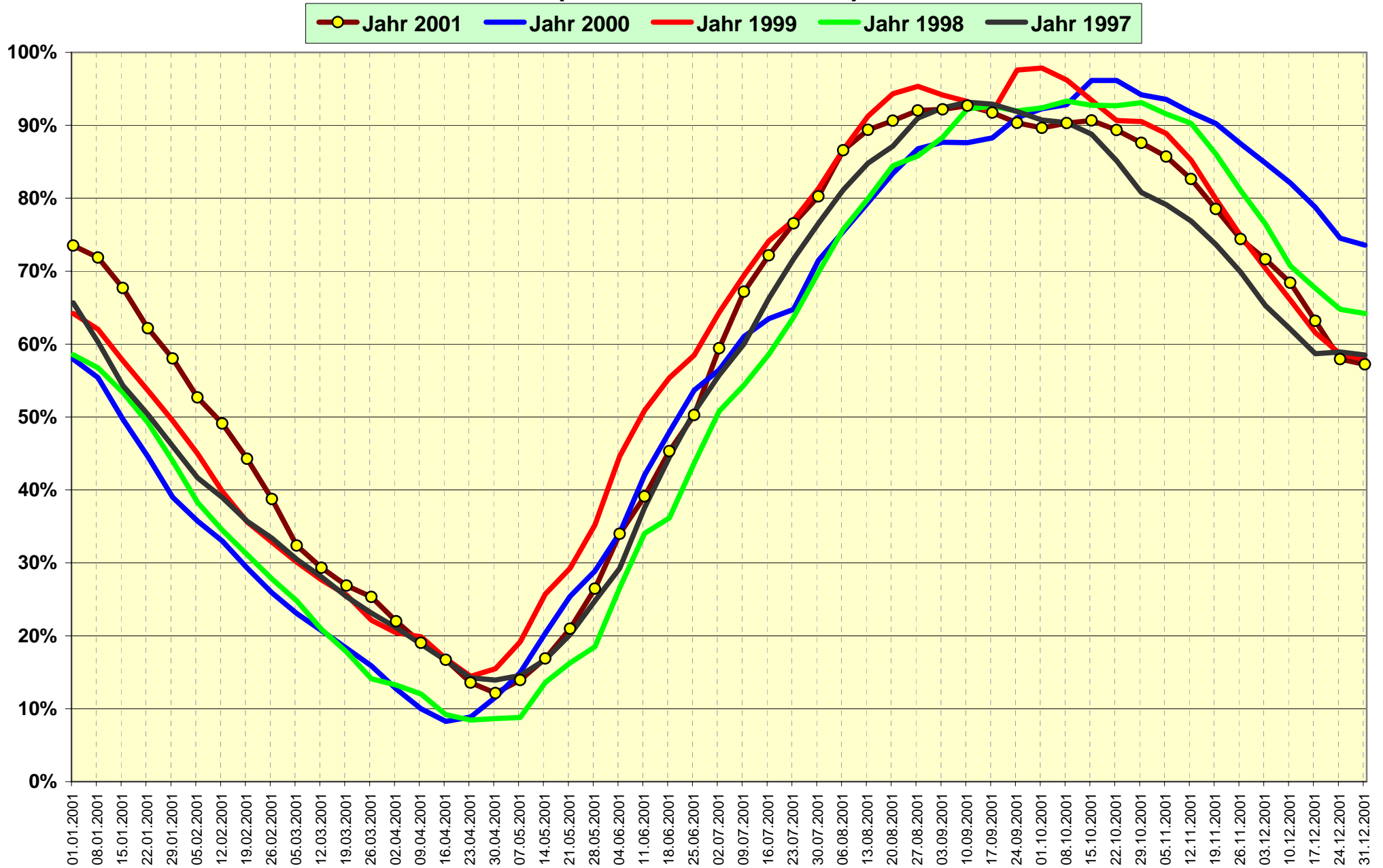


	Wasserführung Rhein in Rheinfelden			Speicherinhalt Schweiz in GWh (Speichervermögen ab 1.08.2000 100% = 8'560 GWh)										100%=8'560 GWh		100%=8'560ab.1.8.	
	interpolierter			Wallis		Graubünden		Tessin		übrige Schweiz		Jahr 2001	Jahr 2000	Jahr 2001	Jahr 2000		
	12.00h in m³/s	Mittelwert (1935-2000)	in %	3'775	in %	1'960	in %	1'225	in %	1'600	in %						
01.Jan 01	776	791	98%	2'648	70.1%	1'599	81.6%	925	75.5%	1'121	70.1%	6'293	4'925	73.5%	57.9%		
08.Jan 01	1'333	780	171%	2'580	68.3%	1'548	79.0%	899	73.4%	1'124	70.3%	6'151	4'708	71.9%	55.4%		
15.Jan 01	883	769	115%	2'462	65.2%	1'443	73.6%	844	68.9%	1'045	65.3%	5'794	4'224	67.7%	49.7%		
22.Jan 01	757	784	97%	2'306	61.1%	1'319	67.3%	757	61.8%	940	58.8%	5'322	3'789	62.2%	44.6%		
29.Jan 01	829	798	104%	2'167	57.4%	1'213	61.9%	705	57.6%	882	55.1%	4'967	3'315	58.0%	39.0%		
05.Feb 01	1'053	813	130%	1'990	52.7%	1'089	55.6%	633	51.7%	799	49.9%	4'511	3'039	52.7%	35.8%		
12.Feb 01	744	828	90%	1'843	48.8%	998	50.9%	593	48.4%	769	48.1%	4'203	2'805	49.1%	33.0%		
19.Feb 01	644	839	77%	1'671	44.3%	882	45.0%	539	44.0%	698	43.6%	3'790	2'491	44.3%	29.3%		
26.Feb 01	656	847	77%	1'466	38.8%	748	38.2%	489	39.9%	614	38.4%	3'317	2'200	38.8%	25.9%		
05.Mrz 01	1'909	855	223%	1'261	33.4%	593	30.3%	406	33.1%	512	32.0%	2'772	1'961	32.4%	23.1%		
12.Mrz 01	1'917	863	222%	1'146	30.4%	500	25.5%	351	28.7%	513	32.1%	2'510	1'760	29.3%	20.7%		
19.Mrz 01	1'958	888	221%	1'033	27.4%	433	22.1%	312	25.5%	523	32.7%	2'301	1'555	26.9%	18.3%		
26.Mrz 01	2'166	924	234%	954	25.3%	376	19.2%	283	23.1%	555	34.7%	2'168	1'349	25.3%	15.9%		
02.Apr 01	1'577	961	164%	810	21.5%	314	16.0%	240	19.6%	517	32.3%	1'881	1'079	22.0%	12.7%		
09.Apr 01	1'632	998	164%	681	18.0%	271	13.8%	191	15.6%	485	30.3%	1'628	850	19.0%	10.0%		
16.Apr 01	1'950	1'037	188%	585	15.5%	229	11.7%	159	13.0%	456	28.5%	1'429	703	16.7%	8.3%		
23.Apr 01	1'681	1'089	154%	478	12.7%	178	9.1%	131	10.7%	375	23.4%	1'162	754	13.6%	8.9%		
30.Apr 01	1'640	1'142	144%	414	11.0%	154	7.9%	111	9.1%	360	22.5%	1'039	984	12.1%	11.6%		
07.Mai 01	1'697	1'195	142%	404	10.7%	212	10.8%	145	11.8%	432	27.0%	1'193	1'272	13.9%	15.0%		
14.Mai 01	1'490	1'247	119%	429	11.4%	333	17.0%	207	16.9%	477	29.8%	1'446	1'729	16.9%	20.3%		
21.Mai 01	1'545	1'304	118%	479	12.7%	480	24.5%	309	25.2%	526	32.9%	1'794	2'160	21.0%	25.4%		
28.Mai 01	1'396	1'361	103%	580	15.4%	650	33.2%	430	35.1%	605	37.8%	2'265	2'454	26.5%	28.9%		
04.Jun 01	1'561	1'418	110%	801	21.2%	858	43.8%	569	46.4%	680	42.5%	2'908	2'898	34.0%	34.1%		
11.Jun 01	2'199	1'475	149%	929	24.6%	1'016	51.8%	677	55.3%	727	45.4%	3'349	3'574	39.1%	42.0%		
18.Jun 01	2'282	1'502	152%	1'094	29.0%	1'196	61.0%	804	65.6%	786	49.1%	3'880	4'074	45.3%	47.9%		
25.Jun 01	1'926	1'488	129%	1'243	32.9%	1'326	67.7%	898	73.3%	836	52.3%	4'303	4'562	50.3%	53.7%		
02.Jul 01	1'665	1'474	113%	1'611	42.7%	1'520	77.6%	1'011	82.5%	946	59.1%	5'088	4'801	59.4%	56.5%		
09.Jul 01	1'585	1'460	109%	1'977	52.4%	1'674	85.4%	1'076	87.8%	1'025	64.1%	5'752	5'187	67.2%	61.0%		
16.Jul 01	2'773	1'440	193%	2'215	58.7%	1'771	90.4%	1'108	90.4%	1'084	67.8%	6'178	5'397	72.2%	63.5%		
23.Jul 01	1'836	1'387	132%	2'404	63.7%	1'840	93.9%	1'137	92.8%	1'173	73.3%	6'554	5'504	76.6%	64.8%		
30.Jul 01	1'309	1'333	98%	2'649	70.2%	1'849	94.3%	1'132	92.4%	1'240	77.5%	6'870	6'077	80.3%	71.5%		
06.Aug 01	1'396	1'280	109%	2'998	79.4%	1'920	98.0%	1'152	94.0%	1'340	83.8%	7'410	6'458	86.6%	75.4%		
13.Aug 01	1'251	1'226	102%	3'221	85.3%	1'920	98.0%	1'148	93.7%	1'361	85.1%	7'650	6'798	89.4%	79.4%		
20.Aug 01	1'192	1'180	101%	3'383	89.6%	1'873	95.6%	1'117	91.2%	1'385	86.6%	7'758	7'140	90.6%	83.4%		
27.Aug 01	974	1'137	86%	3'537	93.7%	1'850	94.4%	1'088	88.8%	1'402	87.6%	7'877	7'429	92.0%	86.8%		
03.Sep 01	946	1'095	86%	3'549	94.0%	1'835	93.6%	1'065	86.9%	1'442	90.1%	7'891	7'506	92.2%	87.7%		
10.Sep 01	1'632	1'052	155%	3'554	94.1%	1'834	93.6%	1'060	86.5%	1'487	92.9%	7'935	7'501	92.7%	87.6%		
17.Sep 01	1'877	1'010	186%	3'522	93.3%	1'820	92.9%	1'051	85.8%	1'460	91.3%	7'853	7'557	91.7%	88.3%		
24.Sep 01	1'657	973	170%	3'471	91.9%	1'789	91.3%	1'037	84.7%	1'436	89.8%	7'733	7'793	90.3%	91.0%		
01.Okt 01	1'163	936	124%	3'433	90.9%	1'775	90.6%	1'041	85.0%	1'425	89.1%	7'674	7'898	89.6%	92.3%		
08.Okt 01	1'083	898	121%	3'436	90.9%	1'801	91.9%	1'047	85.5%	1'447	90.4%	7'731	7'947	90.3%	92.8%		
15.Okt 01	869	861	101%	3'418	90.5%	1'826	93.2%	1'073	87.6%	1'444	90.3%	7'761	8'231	90.7%	96.2%		
22.Okt 01	816	854	96%	3'362	89.1%	1'801	91.9%	1'059	86.4%	1'426	89.1%	7'648	8'231	89.3%	96.2%		
29.Okt 01	770	847	91%	3'277	86.8%	1'781	90.9%	1'042	85.1%	1'398	87.4%	7'498	8'062	87.6%	94.2%		
05.Nov 01	644	839	77%	3'208	85.0%	1'757	89.6%	1'011	82.5%	1'360	85.0%	7'336	8'009	85.7%	93.6%		
12.Nov 01	789	832	95%	3'087	81.8%	1'703	86.9%	963	78.6%	1'321	82.6%	7'074	7'856	82.6%	91.8%		
19.Nov 01	737	828	89%	2'940	77.9%	1'614	82.3%	899	73.4%	1'268	79.3%	6'721	7'725	78.5%	90.2%		
26.Nov 01	770	825	93%	2'802	74.2%	1'522	77.7%	839	68.5%	1'207	75.4%	6'370	7'488	74.4%	87.5%		
03.Dez 01	1'185	822	144%	2'694	71.4%	1'448	73.9%	797	65.1%	1'192	74.5%	6'131	7'260	71.6%	84.8%		
10.Dez 01	946	820	115%	2'586	68.5%	1'360	69.4%	758	61.9%	1'152	72.0%	5'856	7'029	68.4%	82.1%		
17.Dez 01	706	815	87%	2'420	64.1%	1'235	63.0%	684	55.8%	1'070	66.9%	5'409	6'743	63.2%	78.8%		
24.Dez 01	693	804	86%	2'256	59.8%	1'113	56.8%	616	50.3%	975	60.9%	4'960	6'379	57.9%	74.5%		
31.Dez 01	662	793	83%	2209	58.5%	1106	56.4%	595	48.6%	989	61.8%	4'899	6293	57.2%	73.6%		

Speicherinhalt Schweiz (100% = 8'560 GWh)



Verlauf des Speicherinhalts 2000/2001 (Stand Ende Monat) (Schwankungsbreite 1972/73 bis 1999/00)

