



Schweizerische Eidgenossenschaft
Confédération suisse
Confederazione Svizzera
Confederaziun svizra

Federal Department of the Environment,
Transport, Energy and Communications DETEC
Swiss Federal Office of Energy SFOE

June 2018

Energy Consumption in Switzerland 2017

Extract from the Swiss Overall Energy Statistics 2017

Available from August 2018 (German/French)

BBL/Bundespublikationen, 3003 Bern

Phone +41 58 465 50 50

Order by internet: www.bundespublikationen.admin.ch

Order number: 805.006.17 d/f

Internet: www.bfe.admin.ch/statistics

Mühlestrasse 4, CH-3063 Ittigen
Postal address: CH-3003 Bern
Phone +41 58 462 56 11, Fax +41 58 463 25 00
contact@bfe.admin.ch
www.bfe.admin.ch



Final Energy Consumption

Table 1

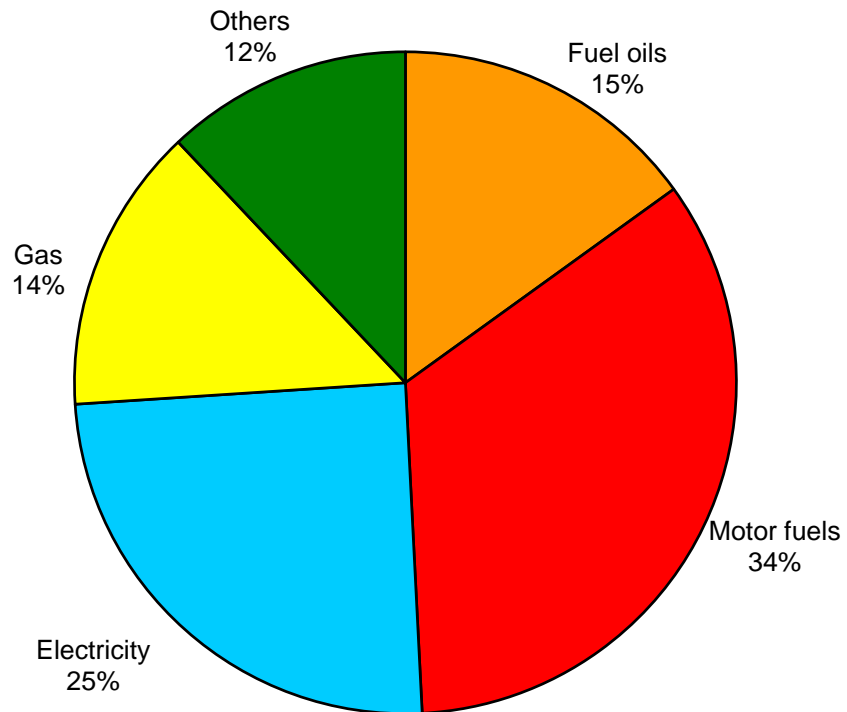
Energy source	Final consumption in original units		Final consumption in TJ		Change in % 2016-2017	Share in %	
	2016	2017	2016	2017		2016	2017
Petroleum products	9'982'000 t	9'743'000 t	428'170	418'020	-2,4	50,2	49,2
Electricity	58'239 GWh	58'483 GWh	209'660	210'540	0,4	24,6	24,8
Gas *	32'563 GWh	33'028 GWh	117'230	118'900	1,4	13,7	14,0
Coal	197'000 t	190'000 t	4'790	4'610	-3,8	0,6	0,5
Wood	-	-	38'980	38'610	-0,9	4,6	4,5
District heating	5'444 GWh	5'575 GWh	19'600	20'070	2,4	2,3	2,4
Waste	-	-	10'790	12'500	15,8	1,3	1,5
Other renewable Energy	-	-	23'680	26'540	12,1	2,8	3,1
thereof Biogenic fuels			3'560	5'630	58,1	0,4	0,7
Biogas **			1'740	1'750	0,6	0,2	0,2
Solar thermal			2'450	2'510	2,4	0,3	0,3
Ambient heat from soil, groundwater, air, etc.			15'930	16'650	4,5	1,9	2,0
Total final consumption	-	-	852'900	849'790	-0,4	100	100

* Net calorific value (NCV: 36,3 MJ/Norm m³); in gas industry the gross calorific value (GCV: 40,3 MJ/Norm m³) is commonly used; NCV = 0,9 * GCV

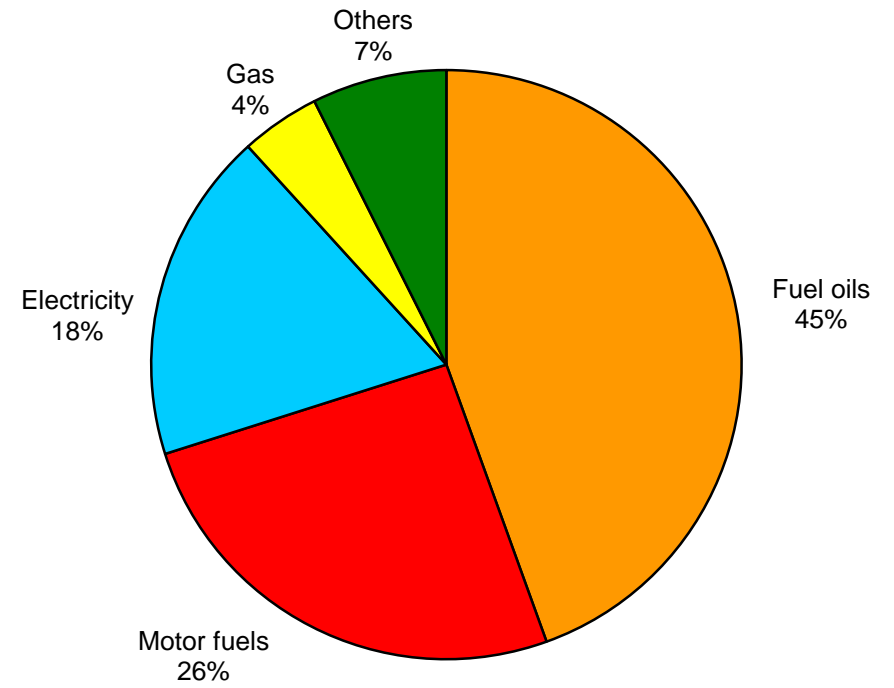
** In 2017, 1'100 TJ of Biogas was injected into the gas distribution system and is included in Gas (2016: 1'000 TJ)



Final Energy Consumption 2017
(Total: 849'790 TJ)



Final Energy Consumption 1980
(Total: 698'290 TJ)





Petroleum Products

Table 2

	Consumption in 1000 t		Consumption in TJ		Change in %	Share in %	
	2016	2017	2016	2017	2016-2017	2016	2017
<u>Fuel oils</u>							
Extra-light heating oil	3'085	2'884	132'350	123'720	-6,5	30,9	29,6
Heavy fuel oil	3	2	120	80	-33,3	0,0	0,0
Petroleum coke	28	24	890	760	-14,6	0,2	0,2
Others	65	73	2'990	3'360	12,4	0,7	0,8
Total fuel oils	3'181	2'983	136'350	127'930	-6,2	31,8	30,6
<u>Motor fuels</u>							
Gasoline	2'412	2'338	102'750	99'600	-3,1	24,0	23,8
Diesel oil	2'672	2'664	114'900	114'550	-0,3	26,8	27,4
Aviation fuel	1'717	1'758	74'170	75'950	2,4	17,3	18,2
Total motor fuels	6'801	6'760	291'820	290'100	-0,6	68,2	69,4
<u>Total petroleum products</u>	9'982	9'743	428'170	418'020	-2,4	100	100



Electricity

Table 3

	GWh (1 GWh = 3,6 TJ)		Change in %	Share in %	
	2016	2017		2016	2017
<u>Production:</u>					
Hydroelectric plants	36'326	36'666	0,93	59,0	59,6
Nuclear power plants	20'235	19'499	-3,6	32,8	31,7
Conventional thermal power plants: <i>thereof</i>	3'072	2'852	-7,2	5,0	4,6
- <i>non-renewable</i>	1'891	1'669	-11,7	3,1	2,7
- <i>renewable</i>	1'181	1'183	0,2	1,9	1,9
Miscellaneous renewables: <i>thereof</i>	1'983	2'470	24,6	3,2	4,0
- <i>Wood</i>	220	322	46,4	0,4	0,5
- <i>Biogas</i>	321	333	3,7	0,5	0,5
- <i>Photovoltaics</i>	1'333	1'683	26,3	2,2	2,7
- <i>Wind</i>	109	133	22,0	0,2	0,2
Domestic production	61'616	61'487	-0,2	100	100
Consumption by storage pumps (-)	2'922	4'160	42,4	4,7	6,8
Net production	58'694	57'327	-2,3	95,3	93,2
Import (+)*	34'096	36'496	-4,0	-	-
Export (-)*	30'173	30'946	-9,2	-	-
Export balance	3'923	5'550	41,5	6,3	8,8
Domestic consumption	62'617	62'877	0,4	100	100
Losses (-)	4'378	4'394	0,4	7,0	7,0
Final consumption	58'239	58'483	0,4	93,0	93,0
<u>Final consumption by sector:</u>				100	100
Households	19'078	19'228	0,8	32,8	32,9
Agriculture	976	972	-0,4	1,7	1,6
Industry	17'761	17'896	0,8	30,5	30,6
Services	15'622	15'664	0,3	26,8	26,8
Transport**	4'802	4'723	-1,6	8,2	8,1

* physical

** thereof railways 2017: 3'149 GWh (2016: 3'199 GWh)



Gas

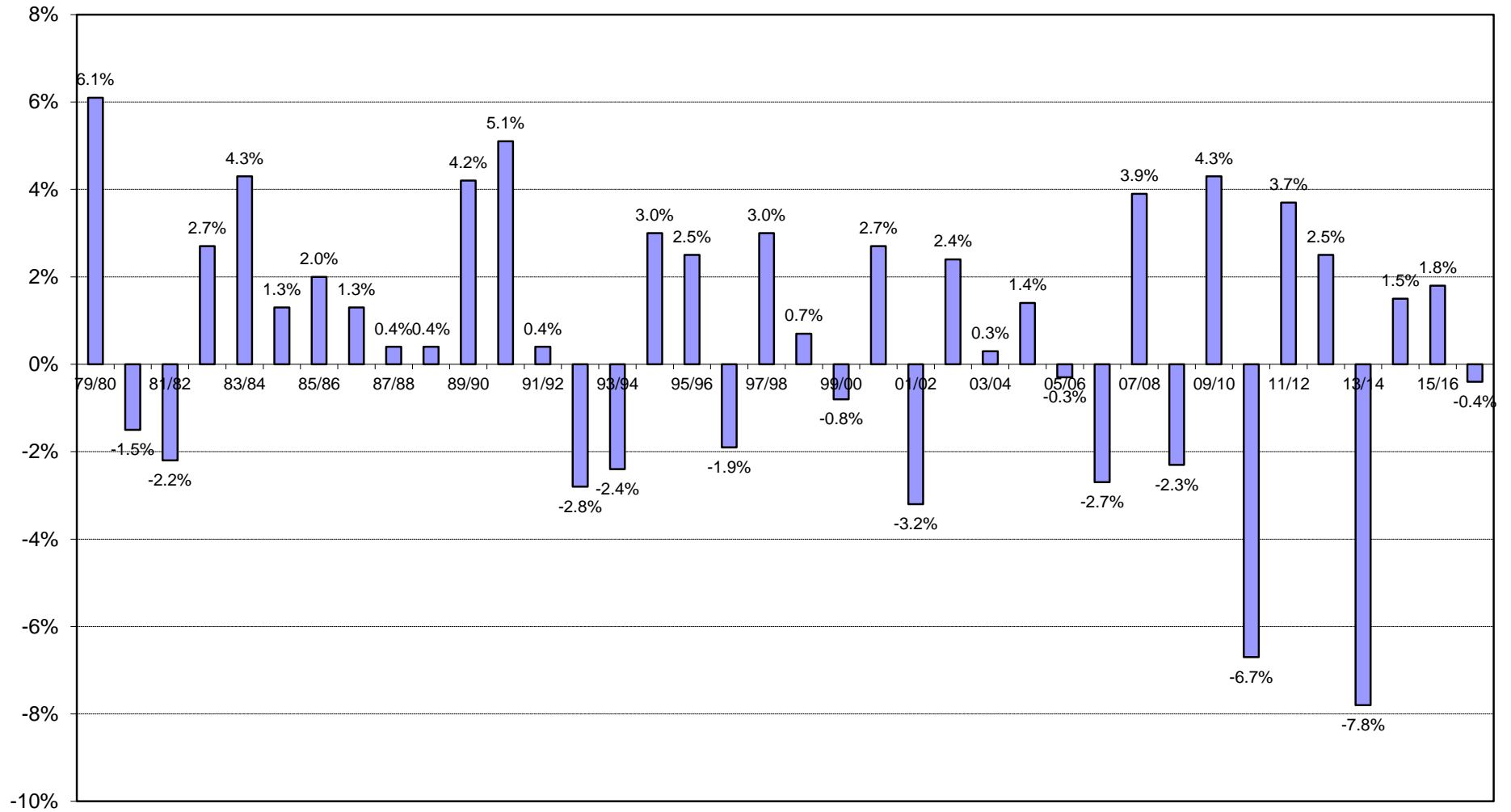
Table 4

	GWh* (1 GWh = 3,6 TJ)		TJ		Change in %
	2016	2017	2016	2017	2016-2017
Gas-works gas made of propane/butane	-	-	-	-	-
Feed-in of biogas into the gas distribution system	277	307	1'000	1'100	-
Imports of natural gas	34'849	34'998	125'460	125'990	0,4
Total	35'126	35'305	126'460	127'090	0,4
less:					
Natural gas used for district heating and electricity production	2'453	2'167	8'830	7'800	-
Distribution losses and gasworks' own consumption	110	110	400	390	-
Final consumption	32'563	33'028	117'230	118'900	1,4

* net calorific value (NCV: 36,3 MJ/Norm m³); in gas industry the gross calorific value (GCV: 40,3 MJ/Norm m³) is commonly used; NCV = 0,9 * GCV.



Rate of Change in Final Energy Consumption per Year





Final Energy Consumption since 1910

