



Schweizerische Eidgenossenschaft
Confédération suisse
Confederazione Svizzera
Confederaziun svizra

Federal Department of the Environment,
Transport, Energy and Communications DETEC
Swiss Federal Office of Energy SFOE

June 2016

Energy Consumption in Switzerland 2015

Extract from the Swiss Overall Energy Statistics 2015

Available from August 2016 (German/French)

BBL/Bundespublikationen, 3003 Bern

Phone +41 58 465 50 50

Order by internet: www.bundespublikationen.admin.ch

Order number: 805.006.15 d/f

Internet: www.bfe.admin.ch/statistics

Mühlestrasse 4, CH-3063 Ittigen
Postal address: CH-3003 Bern
Phone +41 58 462 56 11, Fax +41 58 463 25 00
contact@bfe.admin.ch
www.bfe.admin.ch



Final Energy Consumption

Table 1

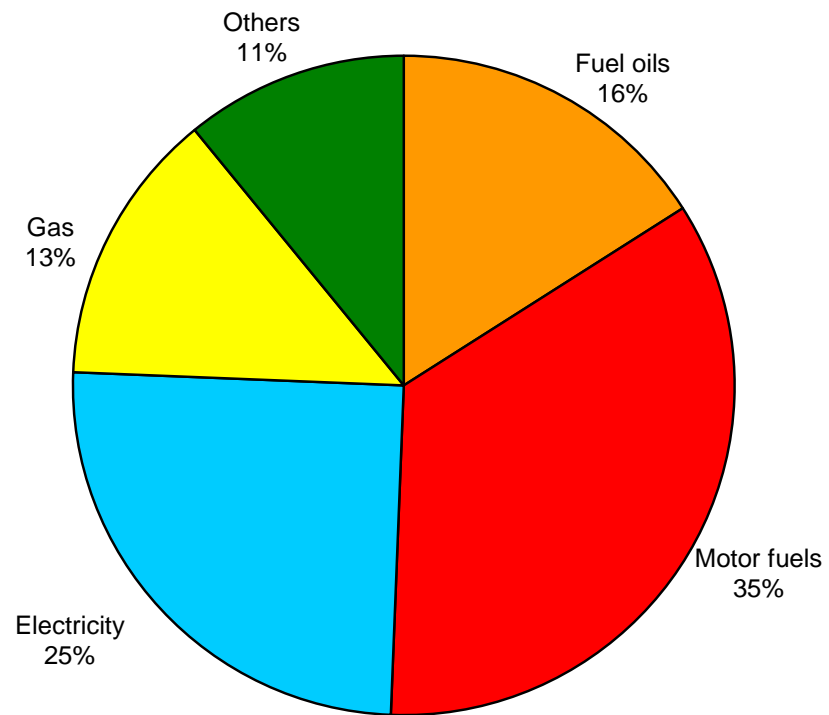
Energy source	Final consumption in original units		Final consumption in TJ		Change in % 2014-2015	Share in %	
	2014	2015	2014	2015		2014	2015
Petroleum products	9'932'000 t	9'894'000 t	425'810	424'420	-0,3	51,6	50,6
Electricity	57'466 GWh	58'246 GWh	206'880	209'690	1,4	25,1	25,0
Gas *	29'750 GWh	31'370 GWh	107'100	112'930	5,4	13,0	13,5
Coal	241'000 t	222'000 t	5'900	5'410	-8,3	0,7	0,6
Wood	-	-	34'510	36'850	6,8	4,2	4,4
District heating	4'525 GWh	5'081 GWh	16'290	18'290	12,3	2,0	2,2
Waste	-	-	11'840	10'200	-13,9	1,4	1,2
Other renewable Energy	-	-	17'450	20'570	17,9	2,1	2,5
thereof Biofuels			870	2'070	137,9	0,11	0,25
Biogas **			1'760	1'750	-0,6	0,21	0,21
Solar thermal			2'210	2'360	6,8	0,27	0,28
Ambient heat from soil, groundwater, air, etc.			12'620	14'400	14,1	1,53	1,72
Total final consumption	-	-	825'780	838'360	1,5	100	100

* Net calorific value (NCV: 36,3 MJ/Norm m³); in gas industry the gross calorific value (GCV: 40,3 MJ/Norm m³) is commonly used; NCV = 0,9 * GCV

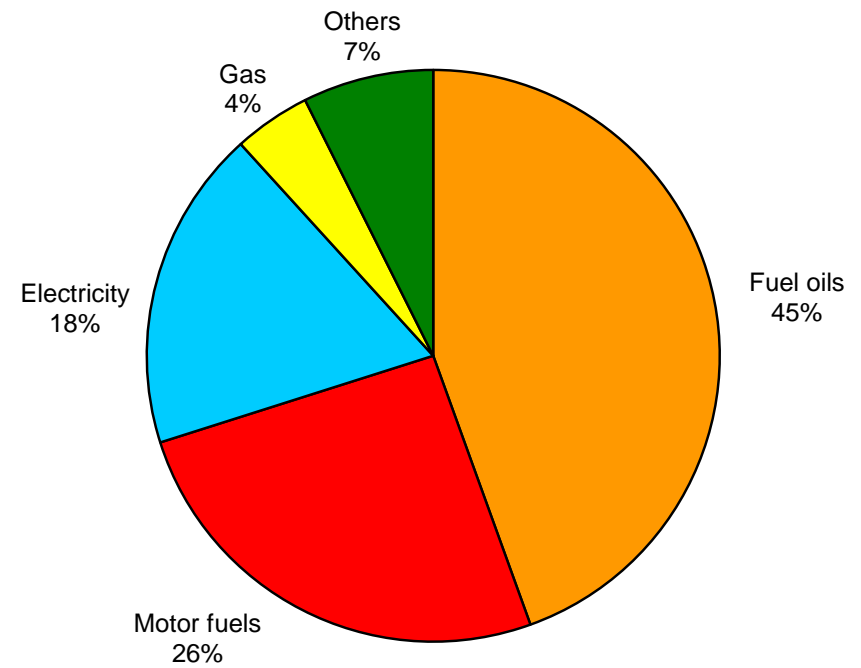
** In 2015, 850 TJ of Biogas was injected into the gas distribution system and is included in Gas (2014: 690 TJ)



Final Energy Consumption 2015
(Total: 838'360 TJ)



Final Energy Consumption 1980
(Total: 698'290 TJ)





Petroleum Products

Table 2

	Consumption in 1000 t		Consumption in TJ		Change in %	Share in %	
	2014	2015	2014	2015	2014-2015	2014	2015
<u>Fuel oils</u>							
Extra-light heating oil	2'853	3'013	122'390	129'260	5,6	28,7	30,5
Heavy fuel oil	9	6	370	250	-32,4	0,1	0,1
Petroleum coke	39	25	1'240	800	-35,5	0,3	0,2
Others	77	78	3'540	3'590	1,4	0,8	0,8
Total fuel oils	2'978	3'122	127'550	133'890	5,0	30,0	31,5
<u>Motor fuels</u>							
Gasoline	2'687	2'490	114'470	106'070	-7,3	26,9	25,0
Diesel oil	2'680	2'643	115'240	113'650	-1,4	27,1	26,8
Aviation fuel	1'587	1'639	68'560	70'810	3,3	16,1	16,7
Total motor fuels	6'954	6'772	298'260	290'530	-2,6	70,0	68,5
<u>Total petroleum products</u>	9'932	9'894	425'810	424'420	-0,3	100	100



Electricity

Table 3

	GWh (1 GWh = 3,6 TJ)		Change in % 2014-2015	Share in %	
	2014	2015		2014	2015
<u>Production:</u>					
Hydroelectric plants	39'308	39'486	0,5	56,5	59,9
Nuclear power plants	26'370	22'095	-16,2	37,9	33,5
Conventional thermal power plants:	2'448	2'660	8,7	3,5	4,0
<i>thereof non-renewable</i>	1'340	1'545	15,3	1,9	2,3
<i>thereof renewable</i>	1'108	1'115	0,6	1,6	1,7
Miscellaneous renewables*	1'507	1'716	13,9	2,2	2,6
Domestic production	69'633	65'957	-5,3	100	100
Consumption by storage pumps (-)	2'355	2'296	-2,5	3,4	3,5
Net production	67'278	63'661	-5,4	96,6	96,4
Import (+)	37'438	42'306	13,0	-	-
Export (-)	42'929	43'341	1,0	-	-
Export balance	-5'491	-1'035	-	8,9	1,7
Domestic consumption	61'787	62'626	1,4	100	100
Losses (-)	4'321	4'380	1,4	7,0	7,0
Final consumption	57'466	58'246	1,4	93,0	93,0
<u>Final consumption by sector:</u>				100	100
Households	18'287	18'762	2,6	31,8	32,2
Agriculture	970	984	1,4	1,7	1,7
Industry	18'019	17'990	-0,2	31,4	30,9
Services	15'519	15'766	1,6	27,0	27,1
Transport**	4'671	4'744	1,6	8,1	8,1

* wood, biogas, photovoltaics, wind

** thereof railways 2015: 3'136 GWh (2014: 3'070 GWh)



Gas

Table 4

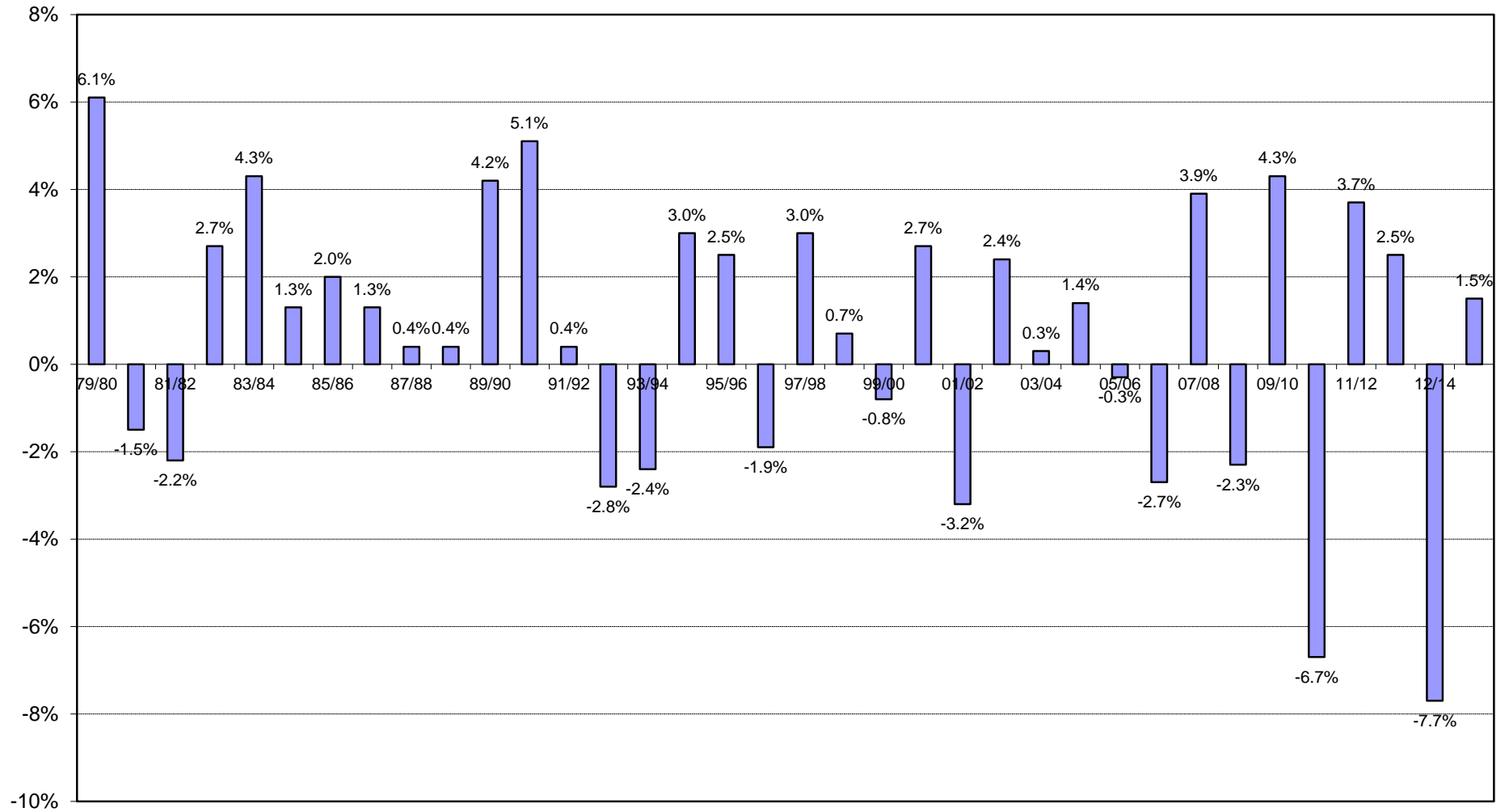
	GWh* (1 GWh = 3,6 TJ)		TJ		Change in %
	2014	2015	2014	2015	2014-2015
Gas-works gas made of propane/butane	-	-	-	-	-
Feed-in of biogas into the gas distribution system	192	236	690	850	-
Imports of natural gas	31'047	33'127	111'770	119'420	6,8
Total	31'239	33'408	112'460	120'270	6,9
less:					
Natural gas used for district heating and electricity production	1'383	1'931	4'980	6'950	-
Distribution losses and gasworks' own consumption	106	107	380	390**	-
Final consumption	29'750	31'370	107'100	112'930	5,4

* net calorific value (NCV: 36,3 MJ/Norm m³); in gas industry the gross calorific value (GCV: 40,3 MJ/Norm m³) is commonly used; NCV = 0,9 * GCV.

** distribution losses (source SVGW) provisional



Rate of Change in Final Energy Consumption per Year





Final Energy Consumption since 1910

