

7 FACTS + FIGURES 2016

The Swiss Federal Office of Energy (SFOE) is the country's competence centre for issues relating to energy supply and energy use at the Federal Department of the Environment, Transport, Energy and Communications (DETEC).

Our objectives

THE SFOE

- 7 Creates the prerequisites for a sufficient, crisis-proof, broad-based, economic and sustainable energy supply.
- 7 Ensures the maintenance of high safety standards in the production, transport and utilisation of energy.
- 7 Creates the necessary conditions for efficient electricity and gas markets and an adapted infrastructure.
- 7 Actively promotes efficient energy use, an increase in the share of renewable energy and a reduction in CO₂ emissions.
- 7 Promotes and coordinates national energy research and supports the development of new markets for sustainable energy use and supply.



OUR COORDINATES

POSTAL ADDRESS

Swiss Federal Office of Energy (SFOE), CH-3003 Bern
Phone +41 58 462 56 11
Fax +41 58 463 25 00
contact@bfe.admin.ch
www.bfe.admin.ch

ADDRESS FOR VISITORS

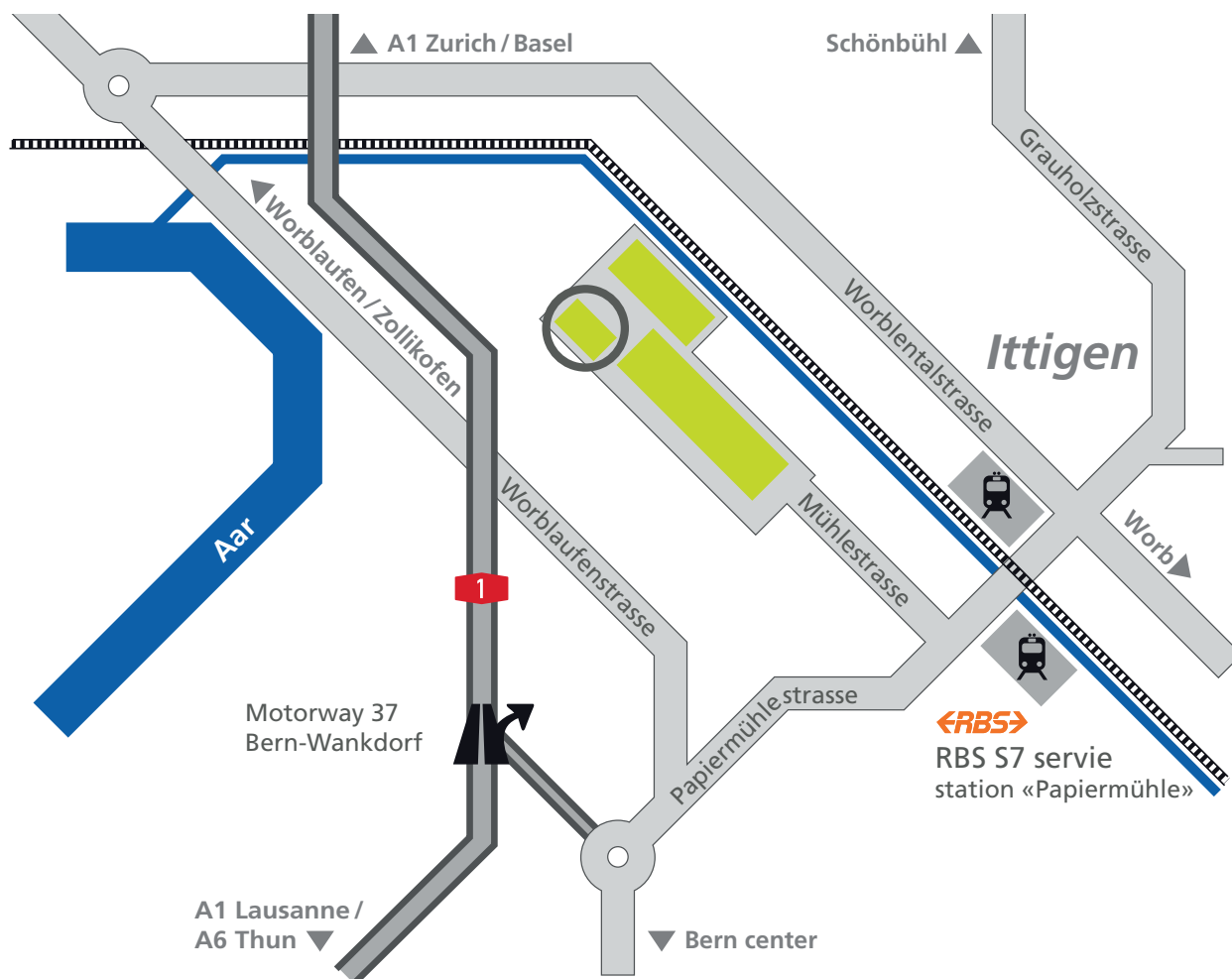
Swiss Federal Office of Energy, Mühlestrasse 4
CH-3063 Ittigen

► HOW TO GET THERE

RBS S7 service (Worb) from Bern main railway station to "Papiermühle", then approximately 5 minutes on foot.

"Bern Wankdorf" motorway exit, follow signs to Ittigen. Marked parking spaces available for visitors (please reserve in advance if possible).

Location map SFOE



OUR STRUCTURE

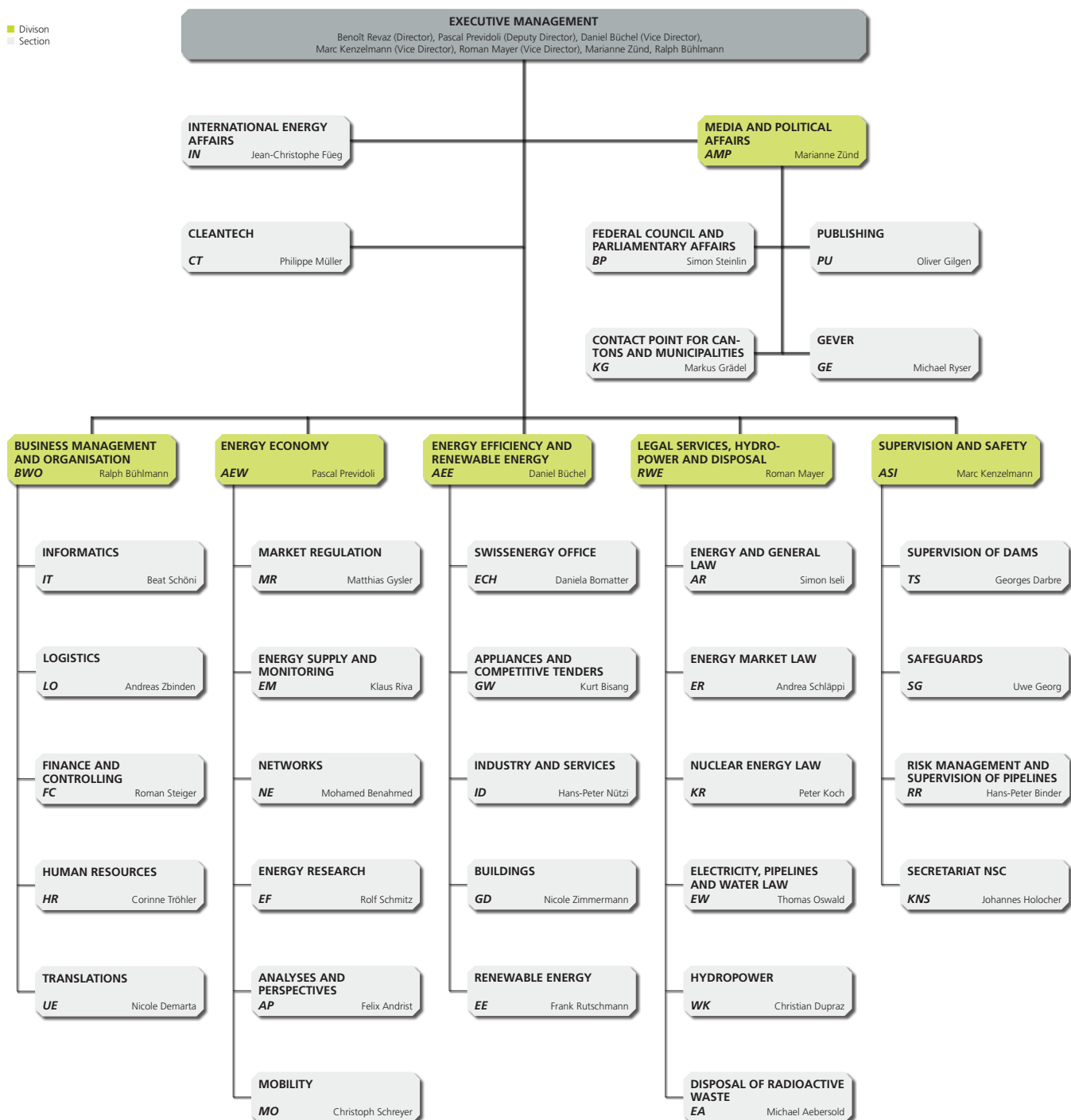
Developments in energy policy, as well as in the energy industry and energy technology, occur at a rapid pace, and the range of tasks for which the SFOE is responsible is also con-

stantly expanding. Supply security, the replacement and expansion of the existing energy infrastructure and the transition towards sustainable and smart energy systems are some of the main priorities for the next few years.

The SFOE is facing these challenges with a streamlined organisational structure so that it can continue to carry out its activities efficiently, effectively and in a carefully coordinated manner in the future.

In 2016, the SFOE comprises six divisions, plus an International Energy Affairs and a Cleantech section.

Swiss Federal Office of Energy SFOE organisational — chart as at 1 november 2016



OUR AREAS OF RESPONSIBILITY

In order to achieve its objectives, the SFOE has a workforce of around 270 employees, who are responsible for the following main areas of activity:

- Preparation and implementation of a coherent energy policy, and preparation and enforcement of the necessary legislation and programmes.
- Promotion of research and development in the area of economical and efficient energy use and the use of renewable forms of energy.
- Dealing with issues relating to the energy industry and energy technology.
- Processing and granting of licences in the area of nuclear energy.
- Licensing of electrical systems for which the Federal Inspectorate for Heavy Current Installations is not responsible.
- Licensing of pipeline systems.
- Appropriate utilisation of hydropower and its regulation on bodies of water bordering neighbouring countries.
- Technical and operational safety of dams and reservoirs, as well as pipeline systems in Switzerland.

► MEDIA AND POLITICAL AFFAIRS (AMP)

The Media and Political Affairs (AMP) division functions as an interface between the Federal Council, the SFOE, Parliament, the cantons, the economy, the media and society. It ensures that the energy business conducted by the Federal Council and Parliament is prepared correctly and punctually, and that it is communicated in an appropriate manner. In cooperation with the administration, the division promotes the exchange of information with the cantons and handles inquiries from the media and private citizens. As the internal interface the division coordinates media and public relations activities and makes sure energy-related themes are prepared appropriately to reach various groups across all forms of media, e.g., on the SFOE's website, in *energeia*, and on the SFOE blog www.energeiaplus.com. The division also assists in the publication of numerous multilingual reports, brochures and information in other forms and is responsible for quality control and adherence to the division's corporate design. It also awards the annual Watt d'Or prize for excellence in the energy sector and organises the Swiss Energy Innovation Days in cooperation with various other countries.

► BUSINESS MANAGEMENT AND ORGANISATION (BWO)

The Business Management and Organisation (BWO) division is responsible for structuring and implementing strategic issues in the areas of financing, human resources, IT and logistics. It provides the SFOE management and divisions with support for their financial, personnel and logistics management and steering activities, as well as in the areas of organisational development and translation services. It is responsible for securing smooth and efficient operations within the SFOE in line with clients' needs, as well as for ensuring workplace safety and the provision of pleasant and healthy working conditions.

OUR AREAS OF RESPONSIBILITY

► ENERGY ECONOMY (AEW)

The Energy Economy (AEW) division is the central contact point for national energy policy issues, and supports the International Energy Affairs (IN) section with issues relating to Swiss energy policy in an international context. It is responsible for the preparation of energy policy and energy economy fundamentals, including impact analyses, statistics and long-term energy perspectives. It plans annual audits of external institutions, manages federal government subsidies and is responsible for the development of the conceptual principles of risk management. It is also responsible for the development of new energy policy instruments and the further development of existing ones, as well as for defining the conditions for the electricity and gas markets and for long-term supply security. It coordinates Switzerland's energy policy in the international context. Other areas of focus of this section include the coordination of national energy research and its integration into the domestic and international environment, and the planning, coordination and implementation of all measures aimed at promoting energy-efficient and sustainable mobility.

► ENERGY EFFICIENCY AND RENEWABLE ENERGY (AEE)

The Energy Efficiency and Renewable Energy (AEE) is the competence centre for energy efficiency and renewable energies. The division defines the fundamentals of energy policy in these areas as well as new measures and instruments to promote energy efficiency and the use of renewable energies. It is also responsible for coordinating the implementation and enforcement of the applicable legislation. In the area of training and further education, AEE secures the further development of technologies and know-how transfer in practice. The SwissEnergy programme, with which the SFOE – in close cooperation with the cantons, municipalities, trade and industry and environmental and consumer organisations – is making a specific contribution towards the implementation of Switzerland's energy and climate policies, is an important area of activity of this section. SwissEnergy is campaigning for the increased use of renewable energy, as well as for efficient energy use in trade and industry, the services sector, mobility, buildings and electrical appliances.

► LEGAL SERVICES, HYDRO-POWER AND DISPOSAL (RWE)

One of the main duties of the Legal Services, Hydropower and Disposal (RWE) division is to deal with all legal issues relating to the SFOE. It formulates draft texts of federal acts and ordinances, organises consultation procedures, prepares dispatches to Parliament and supports parliamentary debates. It is also responsible for procedures in the area of nuclear energy, and issues planning permission for high-pressure gas and oil pipelines, as well as for electrical installations, especially high-voltage power lines. In addition, this division is responsible for hydropower and is the highest supervisory authority in the area of utilisation of bodies of water for the production of energy. It also defines the principles for the disposal of radioactive waste in Switzerland, and is in charge of the site selection procedure for deep geological repositories.

► SUPERVISION AND SAFETY (ASI)

The Supervision and Safety (ASI) division is responsible for all duties of the SFOE in the areas of supervision and risk and safety management. It implements the national strategies for the protection of critical infrastructure and for the prevention of cyber risks in the energy sector. The emergency, crisis and continuity management system implemented by the division makes it possible for the SFOE to maintain services even in exceptional circumstances. ASI is also responsible for structural safety, monitoring and emergency planning for over 200 major dams and oil and gas pipelines. The division is responsible for the national accounting and control system for nuclear materials as well as further supervisory activity incumbent on Switzerland from bilateral and multilateral agreements relevant to the non-proliferation of nuclear weapons, control of exports of nuclear goods and the nuclear fuel cycle. The secretariat of the Swiss Federal Nuclear Safety Commission (CNS) in Brugg, Canton of Aargau, is administratively affiliated to the ASI. ASI chairs the Coordination Commission of the Federal Inspectorate for High Current Installations and represents the SFOE on the Federal NBCN Crisis Management Board ABCN.

OUR AREAS OF RESPONSIBILITY

► INTERNATIONAL ENERGY AFFAIRS (IN)

International Energy Affairs (IN) coordinates Switzerland's national energy policy with its foreign energy policy, prepares negotiations on energy agreements and assists with their realisation. It represents the SFOE in international organisations and committees, including the International Energy Agency (IEA), the OECD Nuclear Energy Agency (NEA), the International Atomic Energy Agency (IAEA) and the International Agency for Renewable Energy (IRENA).

► CLEANTECH (CT)

Cleantech (CT) functions as a coordination centre for the support of pilot, demonstration and flagship projects and the promotion of know-how and technology transfer. It acts as a platform for dialogue between the economy, science and politics, coordinates measures arising from the Cleantech Masterplan, and provides advice on offers relating to the promotion of innovation.

OUR RESOURCES

The administrative complex of the Federal Department of the Environment, Transport, Energy and Communications (DETEC), which accommodates around 1,100 employees, is located in a section of the site of former Gurit-Worbla AG in Ittigen, near Bern. In addition to providing a home for the SFOE, the three buildings that form the DETEC complex also house the Federal Office of Civil Aviation (FOCA), the Federal Roads Office (FEDRO) and the Federal Office of Transport (FOT).

As of 1 January 2016 the SFOE employed 271 staff in 238 full-time jobs, incl. 6 graduate trainees and 7 commercial apprentices. The proportion of women is 39 percent overall, and around 24 percent in management positions. In order for the SFOE to perform its official mandates, its personnel have to possess a great deal of specialised know-how from practice and research. In view of this, the proportion of employees with a degree from a university or college of technology is very high (around 76 percent). The SFOE ensures that its personnel are provided with further education, and it also supports constant exchange with representatives from the administration, the economy, politics, science and non-governmental organisations.

FURTHER INFORMATION

energeia

Newsletter of the Swiss Federal Office of Energy

➤ www.bfe.admin.ch/energeia

For a free subscription, go to

➤ abo@bfe.admin.ch

SWISS FEDERAL OFFICE OF ENERGY (SFOE)

Mühlestrasse 4, CH-3063 Ittigen

Postal address: CH-3003 Bern

Phone +41 58 462 56 11

Fax +41 58 463 25 00

contact@bfe.admin.ch

www.bfe.admin.ch



- www.bfe.admin.ch
- www.energeiaplus.com
- www.energieschweiz.ch
- www.uvek.admin.ch
- www.ensi.ch
- www.kns.admin.ch
- www.est.ch
- www.bfe.admin.ch/eri