



---

# Energy Consumption in Switzerland 2013

---

Extract from the Swiss Overall Energy Statistics 2013

Available from August 2014 (German/French)

BBL/Bundespublikationen, 3003 Bern

Phone +41 58 465 50 50

Order by internet: [www.bundespublikationen.admin.ch](http://www.bundespublikationen.admin.ch)

Order number: 805.006.13 d/f

Internet: [www.bfe.admin.ch/statistics](http://www.bfe.admin.ch/statistics)



## Final Energy Consumption

Table 1

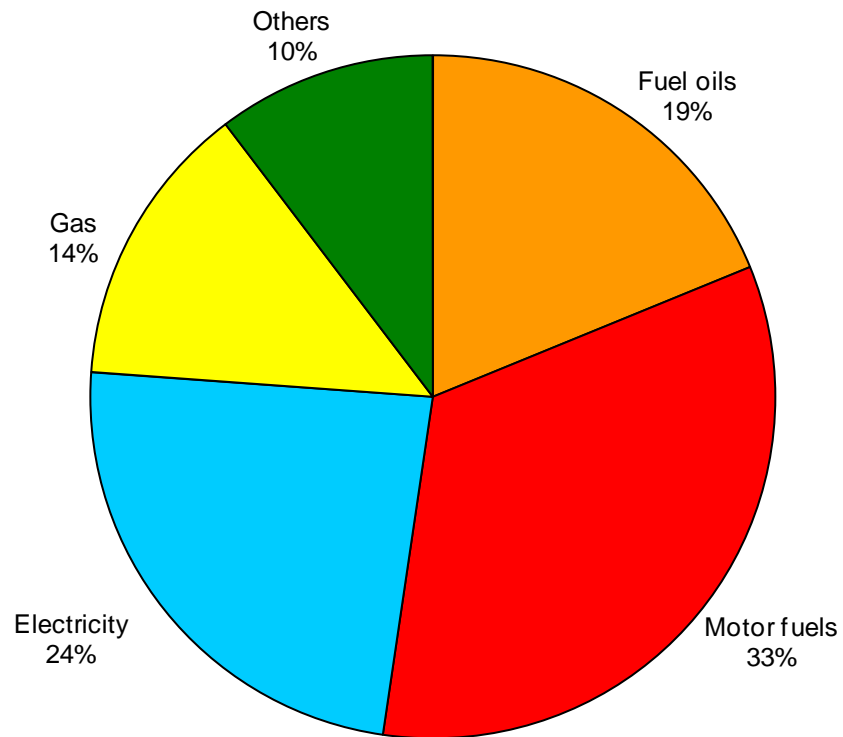
Energy source	Final consumption in original units		Final consumption in TJ		Change in % 2012-2013	Share in %	
	2012	2013	2012	2013		2012	2013
Petroleum products	10'773'000 t	10'933'000 t	461'580	468'790	1,6	52,8	52,3
Electricity	58'973 GWh	59'323 GWh	212'300	213'560	0,6	24,3	23,8
Gas *	31'774 GWh	33'660 GWh	114'390	121'170	5,9	13,1	13,5
Coal	210'000 t	226'000 t	5'270	5'670	7,6	0,6	0,6
Wood	-	-	37'000	40'460	9,4	4,2	4,5
District heating	4'689 GWh	4'969 GWh	16'880	17'890	6,0	1,9	2,0
Waste	-	-	10'260	10'500	2,3	1,2	1,2
Other renewable Energy	-	-	16'360	17'960	9,8	1,9	2,0
thereof Biofuels			520	480	-7,7	0,06	0,05
Biogas **			1'800	1'810	0,6	0,21	0,20
Solar thermal			1'850	2'040	10,3	0,21	0,23
Ambient heat from soil, groundwater, air, etc.			12'190	13'630	11,8	1,39	1,52
Total final consumption	-	-	874'040	896'000	2,5	100	100

\* Net calorific value (NCV: 36,3 MJ/Norm m<sup>3</sup>); in gas industry the gross calorific value (GCV: 40,3 MJ/Norm m<sup>3</sup>) is commonly used; NCV = 0,9 \* GCV

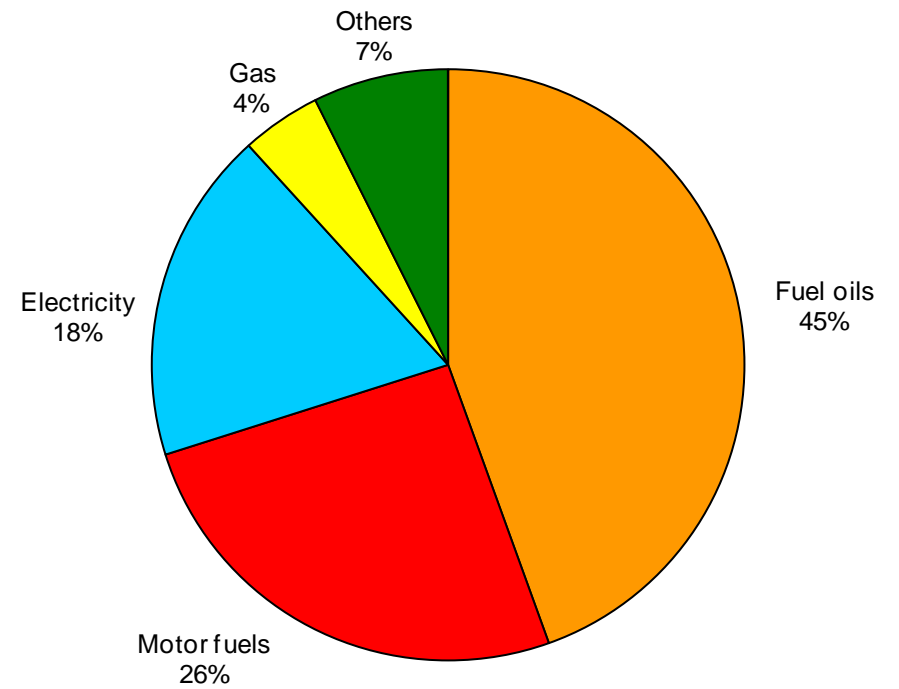
\*\* In 2013, 460 TJ of Biogas was injected into the gas distribution system and is included in Gas (2012: 320 TJ)



**Final Energy Consumption 2013**  
(Total: 896'000 TJ)



**Final Energy Consumption 1980**  
(Total: 698'290 TJ)





## Petroleum Products

Table 2

	Consumption in 1000 t		Consumption in TJ		Change in %	Share in %	
	2012	2013	2012	2013	2012-2013	2012	2013
<u>Fuel oils</u>							
Extra-light heating oil	3'598	3'789	154'280	162'550	5,4	33,4	34,7
Heavy fuel oil	36	21	1'480	870	-41,2	0,3	0,2
Petroleum coke	43	33	1'370	1'050	-23,4	0,3	0,2
Others	87	87	4'000	4'000	0,0	0,9	0,9
Total fuel oils	3'764	3'930	161'130	168'460	4,5	34,9	35,9
<u>Motor fuels</u>							
Gasoline	2'937	2'803	125'100	119'410	-4,5	27,1	25,5
Diesel oil	2'513	2'624	108'030	112'830	4,4	23,4	24,1
Aviation fuel	1'559	1'576	67'330	68'080	1,1	14,6	14,5
Total motor fuels	7'009	7'003	300'450	300'320	0,0	65,1	64,1
<u>Total petroleum products</u>	10'773	10'933	461'580	468'790	1,6	100	100



## Electricity

Table 3

	GWh (1 GWh = 3,6 TJ)		Change in % 2012-2013	Share in %	
	2012	2013		2012	2013
<u>Production:</u>					
Hydroelectric plants	39'906	39'572	-0,8	58,7	57,9
Nuclear power plants	24'345	24'871	2,2	35,8	36,4
Conventional thermal power plants and other plants	3'768	3'869	2,7	5,5	5,7
<b>Domestic production</b>	<b>68'019</b>	<b>68'312</b>	<b>0,4</b>	<b>100</b>	<b>100</b>
Consumption by storage pumps (-)	2'411	2'132	-11,6	3,5	3,1
<b>Net production</b>	<b>65'608</b>	<b>66'180</b>	<b>0,9</b>	<b>96,5</b>	<b>96,9</b>
Import (+)	86'825	36'208	-58,3	-	-
Export (-)	89'025	38'604	-56,6	-	-
Export balance	-2'200	-2'396	-	3,5	3,8
<b>Domestic consumption</b>	<b>63'408</b>	<b>63'784</b>	<b>0,6</b>	<b>100</b>	<b>100</b>
Losses (-)	4'435	4'461	0,6	7,0	7,0
<b>Final consumption</b>	<b>58'973</b>	<b>59'323</b>	<b>0,6</b>	<b>93,0</b>	<b>93,0</b>
<u>Final consumption by sector:</u>				100	100
Households	18'333	18'768	2,4	31,1	31,6
Agriculture	986	993	0,7	1,7	1,7
Industry	19'029	18'768	-1,4	32,2	31,6
Services	15'855	16'009	1,0	26,9	27,0
Transport*	4'770	4'785	0,3	8,1	8,1

\* of which railways 2013: 3'143 GWh (2012: 3'094 GWh)



## Gas

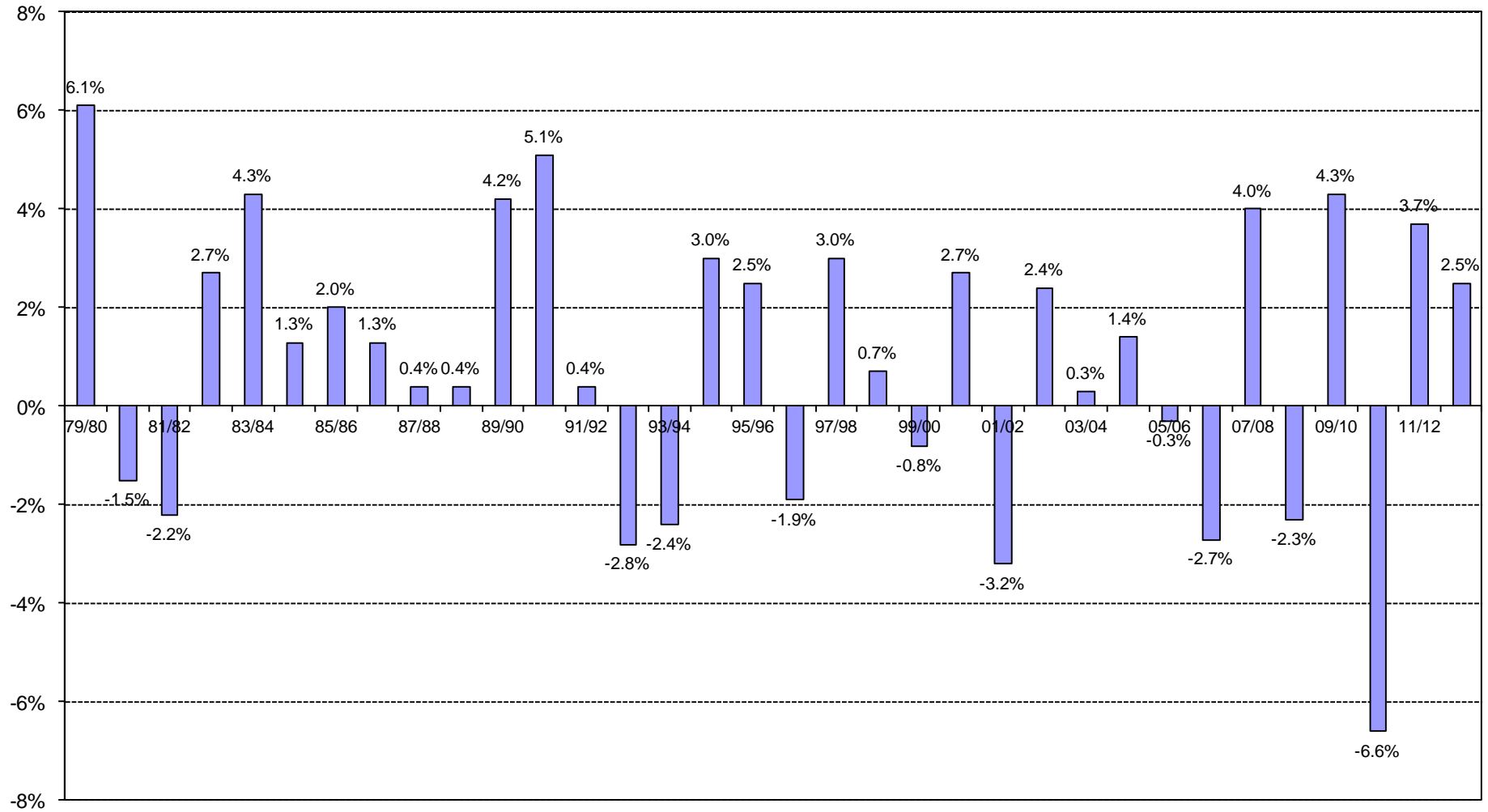
Table 4

	GWh* (1 GWh = 3,6 TJ)		TJ		Change in %
	2012	2013	2012	2013	2012-2013
Gas-works gas made of propane/butane	-	-	-	-	-
Feed-in of biogas into the gas distribution system	89	128	320	460	-
Imports of natural gas	34'034	35'841	122'520	129'030	5,3
Total	34'123	35'969	122'840	129'490	5,4
less:					
Natural gas used for district heating and electricity production	2'231	2'189	8'030	7'880	-
Distribution losses and gasworks' own consumption	118	120	420	440	-
Final consumption	31'774	33'660	114'390	121'170	5,9

\* Net calorific value (NCV: 36,3 MJ/Norm m<sup>3</sup>); in gas industry the gross calorific value (GCV: 40,3 MJ/Norm m<sup>3</sup>) is commonly used; NCV = 0,9 \* GCV.



### Rate of Change in Final Energy Consumption per Year





### Final Energy Consumption since 1910

