



---

# Energy Consumption in Switzerland 2012

---

Extract from the Swiss Overall Energy Statistics 2012

Available from August 2013 (German/French)

BBL/Bundespublikationen, 3003 Bern

Phone +41 31 325 50 50

Order by internet: [www.bundespublikationen.admin.ch](http://www.bundespublikationen.admin.ch)

Order number: 805.006.12 d/f

Internet: [www.bfe.admin.ch/statistics](http://www.bfe.admin.ch/statistics)



## Final Energy Consumption

Table 1

Energy source	Final consumption in original units		Final consumption in TJ		Change in % 2011-2012	Share in %	
	2011	2012	2011	2012		2011	2012
Petroleum products	10'678'000 t	11'017'000 t	455'610	470'060	3,2	53,6	53,3
Electricity	58'599 GWh	58'973 GWh	210'960	212'300	0,6	24,8	24,1
Gas *	28'859 GWh	31'653 GWh	103'890	113'950	9,7	12,2	12,9
Coal	233'000 t	209'000 t	5'990	5'470	-8,7	0,7	0,6
Wood	-	-	33'480	37'040	10,6	3,9	4,2
District heating	4'406 GWh	4'689 GWh	15'860	16'880	6,4	1,9	1,9
Waste	-	-	10'530	10'260	-2,6	1,2	1,2
Other renewable Energy	-	-	14'200	16'320	14,9	1,7	1,8
thereof Biofuels			450	520	15,6	0,05	0,06
Biogas **			1'680	1'760	4,8	0,20	0,20
Solar thermal			1'660	1'850	11,4	0,20	0,21
Ambient heat from soil, groundwater, air, etc.			10'420	12'180	16,9	1,23	1,38
Total final consumption	-	-	850'520	882'280	3,7	100	100

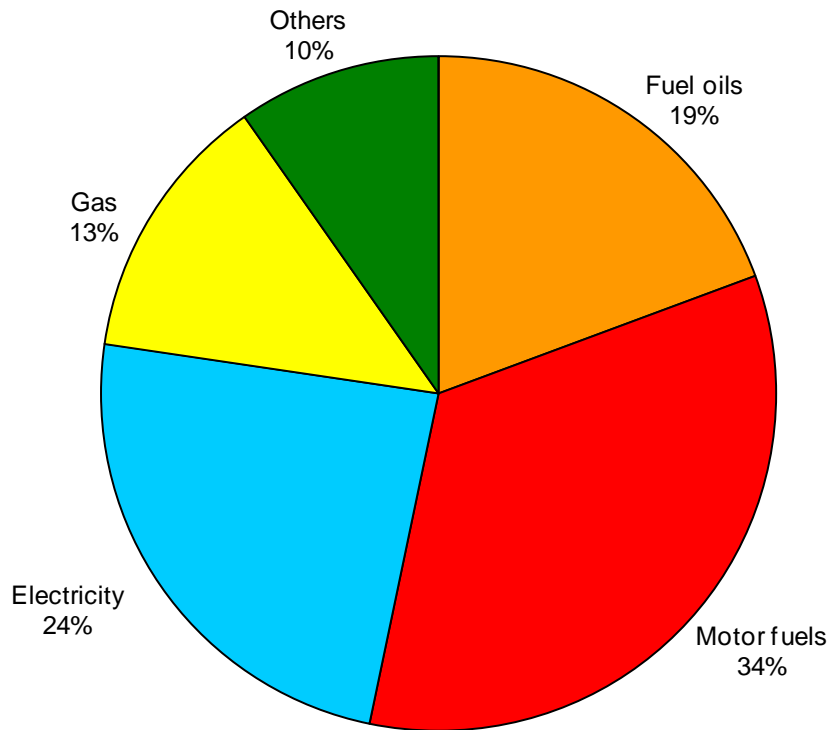
\* Net calorific value (NCV: 36,3 MJ/Norm m<sup>3</sup>); in gas industry the gross calorific value (GCV: 40,3 MJ/Norm m<sup>3</sup>) is commonly used; NCV = 0,9 \* GCV

\*\* In 2012, 320 TJ of Biogas was injected into the gas distribution system and is included in Gas (2011: 290 TJ)

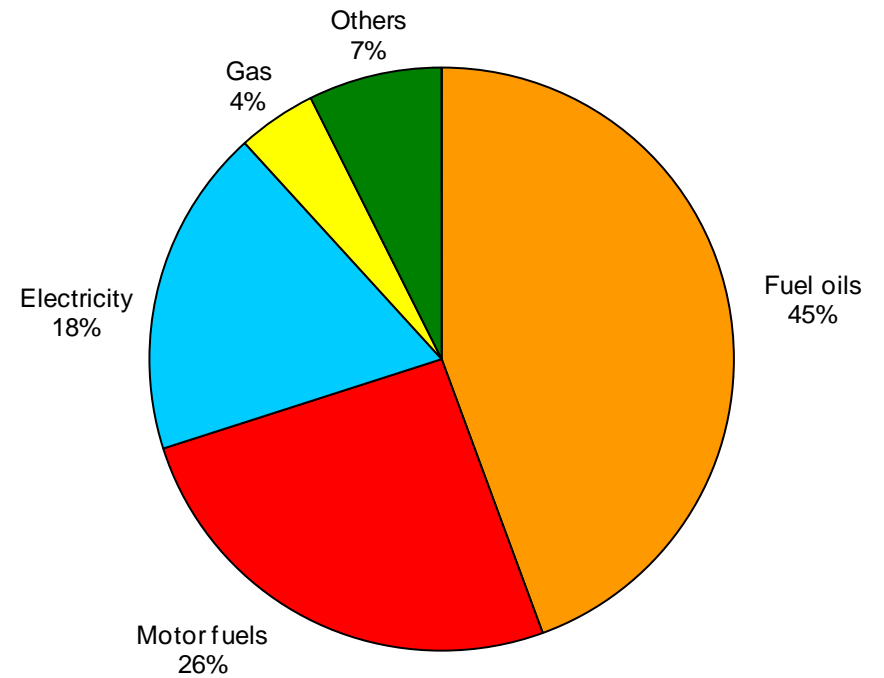
\*\*\*According to international guidelines on energy statistics (IEA, EU and UNO), solar thermal energy consumption for hay drying is no longer part of the renewable energy statistics. This results in a reduction in solar thermal energy consumption of 400 TJ in 2011.



**Final Energy Consumption 2012**  
(Total: 882'280 TJ)



**Final Energy Consumption 1980**  
(Total: 697'110 TJ)





## Petroleum Products

Table 2

	Consumption in 1000 t		Consumption in TJ		Change in % 2011-2012	Share in %	
	2011	2012	2011	2012		2011	2012
<u>Fuel oils</u>							
Extra-light heating oil	3'577	3'842	152'390	163'660	7,4	33,4	34,8
Heavy fuel oil	36	36	1'470	1'480	0,7	0,3	0,3
Petroleum coke	40	43	1'400	1'500	7,1	0,3	0,3
Others	90	87	4'140	4'000	-3,4	0,9	0,9
Total fuel oils	3'743	4'008	159'400	170'640	7,1	35,0	36,3
<u>Motor fuels</u>							
Gasoline	3'044	2'937	129'370	124'820	-3,5	28,4	26,6
Diesel oil	2'369	2'513	101'390	107'560	6,1	22,3	22,9
Aviation fuel	1'522*	1'559	65'440*	67'040	2,4	14,4	14,3
Total motor fuels	6'935	7'009	296'210	299'420	1,1	65,0	63,7
<u>Total petroleum products</u>	10'678	11'017	455'610	470'060	3,2	100	100

\* revised by Carbura/Erdölvereinigung



## Electricity

Table 3

	GWh (1 GWh = 3,6 TJ)		Change in % 2011-2012	Share in %	
	2011	2012		2011	2012
<u>Production:</u>					
Hydroelectric plants	33'795	39'906	18,1	53,7	58,7
Nuclear power plants	25'560	24'345	-4,8	40,7	35,8
Conventional thermal power plants and other plants	3'526	3'768	6,9	5,6	5,5
<b>Domestic production</b>	<b>62'881</b>	<b>68'019</b>	<b>8,2</b>	<b>100</b>	<b>100</b>
Consumption by storage pumps (-)	2'466	2'411	-2,2	3,9	3,5
<b>Net production</b>	<b>60'415</b>	<b>65'608</b>	<b>8,6</b>	<b>96,1</b>	<b>96,5</b>
Import (+)	83'298	86'825	4,2	-	-
Export (-)	80'711	89'025	10,3	-	-
Export balance	2'587	-2'200	-	4,1	3,5
<b>Domestic consumption</b>	<b>63'002</b>	<b>63'408</b>	<b>0,6</b>	<b>100</b>	<b>100</b>
Losses (-)	4'403	4'435	0,7	7,0	7,0
<b>Final consumption</b>	<b>58'599</b>	<b>58'973</b>	<b>0,6</b>	<b>93,0</b>	<b>93,0</b>
<u>Final consumption by sector:</u>				100	100
Households	17'942	18'333	2,2	30,6	31,1
Agriculture	987	986	-0,1	1,7	1,7
Industry	19'205	19'029	-0,9	32,8	32,2
Services	15'732	15'855	0,8	26,8	26,9
Transport*	4'733	4'770	0,8	8,1	8,1

\* of which railways 2012: 3'094 GWh (2011: 3'061 GWh)



## Gas

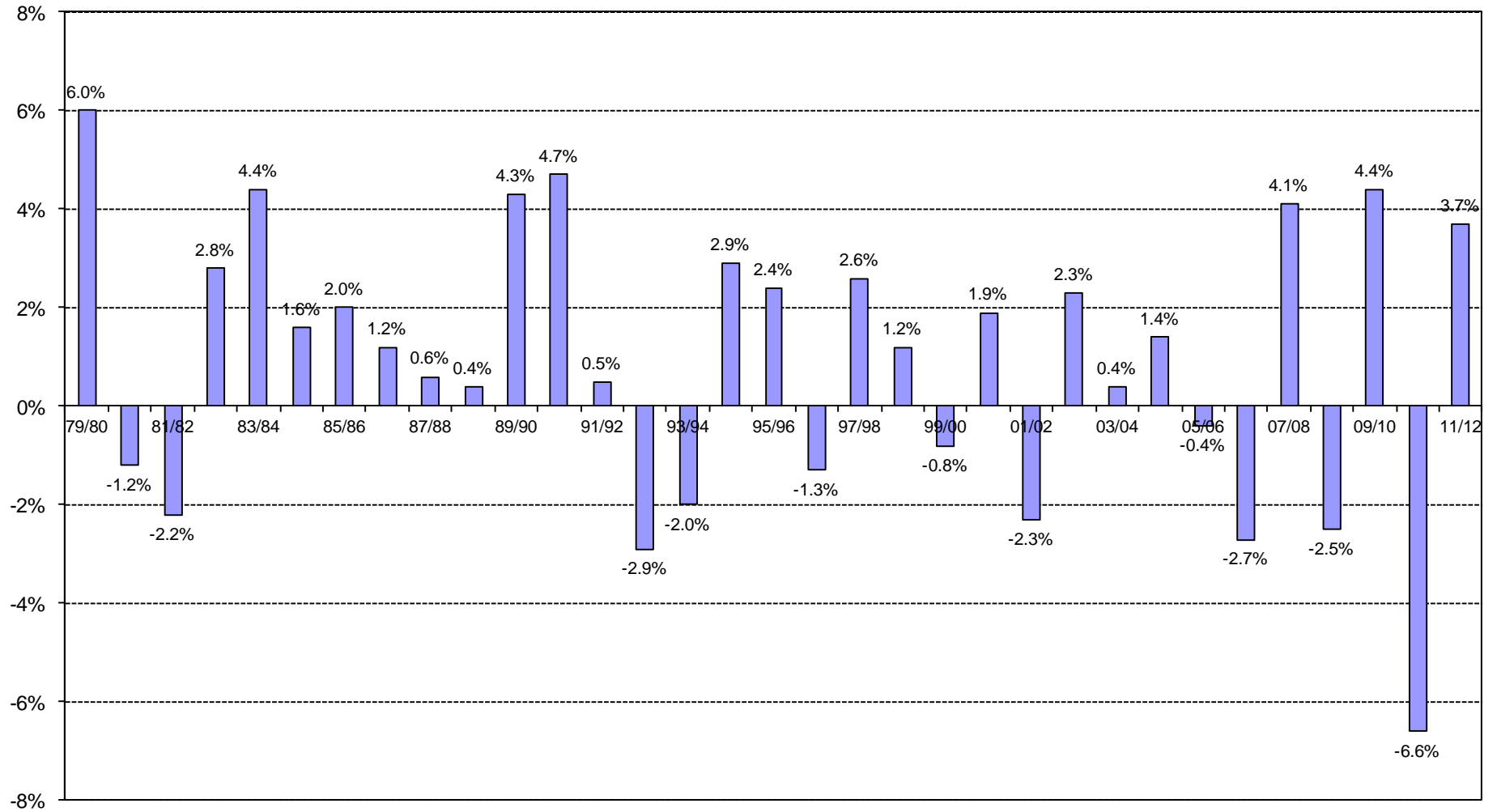
Table 4

	GWh* (1 GWh = 3,6 TJ)		TJ		Change in %
	2011	2012	2011	2012	2011-2012
Gas-works gas made of propane/butane	-	-	-	-	-
Feed-in of biogas into the gas distribution system	81	89	290	320	-
Imports of natural gas	31'048	34'034	111'770	122'520	9,6
Total	31'129	34'123	112'060	122'840	9,6
less:					
Natural gas used for district heating and electricity production	2'053	2'231	7'390	8'030	-
Distribution losses and gasworks' own consumption	217	239	780	860	-
Final consumption	28'859	31'653	103'890	113'950	9,7

\* Net calorific value (NCV: 36,3 MJ/Norm m<sup>3</sup>); in gas industry the gross calorific value (GCV: 40,3 MJ/Norm m<sup>3</sup>) is commonly used; NCV = 0,9 \* GCV.



### Rate of Change in Final Energy Consumption per Year





### Final Energy Consumption since 1910

