



Schweizerische Eidgenossenschaft
Confédération suisse
Confederazione Svizzera
Confederaziun svizra

Federal Department of the Environment,
Transport, Energy and Communications DETEC
Swiss Federal Office of Energy SFOE

June 2012

Energy Consumption in Switzerland 2011

Extract from the Swiss Energy Statistics 2011

Available from August 2012 (German/French)

BBL/Bundespublikationen, 3003 Bern

Phone +41 31 325 50 50

Order by internet: www.bundespublikationen.admin.ch

Order number: 805.006.11 d/f

Internet: www.bfe.admin.ch/statistics

Mühlestrasse 4, CH-3063 Ittigen
Postal address: CH-3003 Bern
Phone +41 31 322 56 11, Fax +41 31 323 25 00
contact@bfe.admin.ch
www.bfe.admin.ch



Final Energy Consumption

Table 1

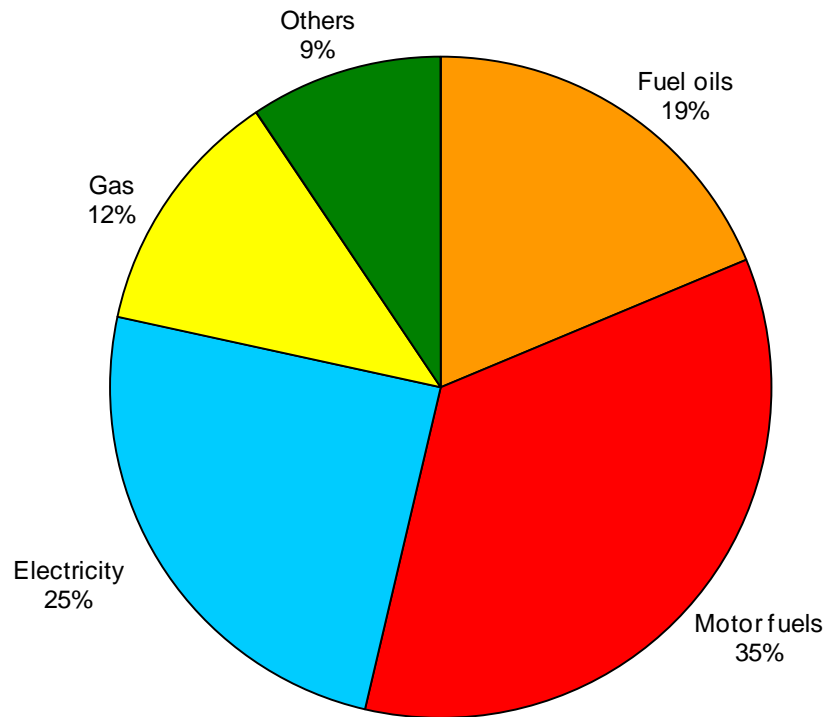
Energy source	Final consumption in original units		Final consumption in TJ		Change in % 2010-2011	Share in %	
	2010	2011	2010	2011		2010	2011
Petroleum products	11'588'000 t	10'721'000 t	494'260	457'460	-7,4	54,2	53,7
Electricity	59'785 GWh	58'599 GWh	215'230	210'960	-2,0	23,6	24,8
Gas *	32'085 GWh	28'806 GWh	115'510	103'700	-10,2	12,7	12,2
Coal	246'000 t	233'000 t	6'420	5'990	-6,7	0,7	0,7
Wood	-	-	38'010	33'670	-11,4	4,2	4,0
District heating	4'789 GWh	4'406 GWh	17'240	15'860	-8,0	1,9	1,9
Waste	-	-	10'030	10'080	0,5	1,1	1,2
Other renewable Energy	-	-	14'740	14'610	-0,9	1,6	1,7
thereof Biofuels			420	450	7,1	0,05	0,05
Biogas **			1'620	1'680	3,7	0,18	0,20
Solar thermal			1'850	2'060	11,4	0,20	0,24
Ambient heat from soil, groundwater, air, etc.			10'850	10'420	-4,0	1,19	1,22
Total final consumption	-	-	911'440	852'330	-6,5	100	100

* Net calorific value (NCV: 36,3 MJ/Norm m³); in gas industry the gross calorific value (GCV: 40,3 MJ/Norm m³) is commonly used; NCV = 0,9 * GCV

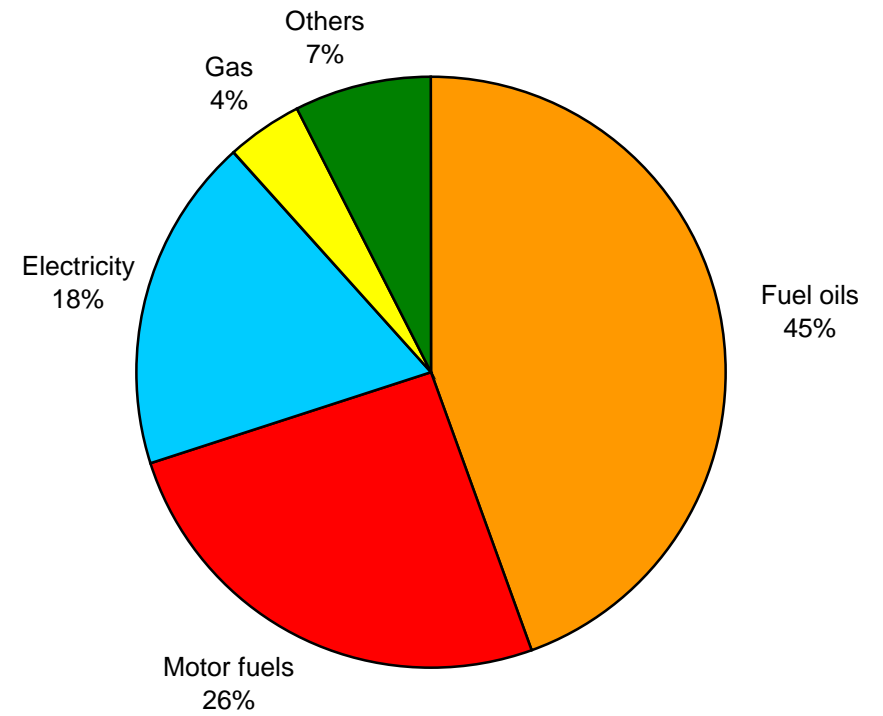
** In 2011, 290 TJ of Biogas was injected into the gas distribution system and is included in Gas (2010: 210 TJ)



Final Energy Consumption 2011
(Total: 852'330 TJ)



Final Energy Consumption 1980
(Total: 697'110 TJ)





Petroleum Products

Table 2

	Consumption in 1000 t		Consumption in TJ		Change in % 2010-2011	Share in %	
	2010	2011	2010	2011		2010	2011
<u>Fuel oils</u>							
Extra-light heating oil	4'494	3'577	191'460	152'390	-20,4	38,7	33,3
Heavy fuel oil	54	36	2'230	1'470	-34,1	0,5	0,3
Petroleum coke	47	40	1'640	1'400	-14,6	0,3	0,3
Others	91	90	4'190	4'140	-1,2	0,8	0,9
Total fuel oils	4'686	3'743	199'520	159'400	-20,1	40,4	34,8
<u>Motor fuels</u>							
Gasoline	3'166	3'044	134'560	129'370	-3,9	27,2	28,3
Diesel oil	2'308	2'369	98'780	101'390	2,6	20,0	22,2
Aviation fuel	1'428	1'565	61'400	67'290	9,6	12,4	14,7
Total motor fuels	6'902	6'978	294'740	298'060	1,1	59,6	65,2
<u>Total petroleum products</u>	11'588	10'721	494'260	457'460	-7,4	100	100



Electricity

Table 3

	GWh (1 GWh = 3,6 TJ)		Change in % 2010-2011	Share in %	
	2010	2011		2010	2011
<u>Production:</u>					
Hydroelectric plants	37'450	33'795	-9,8	56,5	53,7
Nuclear power plants	25'205	25'560	1,4	38,1	40,7
Conventional thermal power plants and other plants	3'597	3'526	-2,0	5,4	5,6
Domestic production	66'252	62'881	-5,1	100	100
Consumption by storage pumps (-)	2'494	2'466	-1,1	3,8	3,9
Net production	63'758	60'415	-5,2	96,2	96,1
Import (+)	66'834	83'298	24,6	-	-
Export (-)	66'314	80'711	21,7	-	-
Export balance	520	2'587	-	0,8	4,1
Domestic consumption	64'278	63'002	-2,0	100	100
Losses (-)	4'493	4'403	-2,0	7,0	7,0
Final consumption	59'785	58'599	-2,0	93,0	93,0
<u>Final consumption by sector:</u>				100	100
Households	18'618	17'942	-3,6	31,2	30,6
Agriculture	1'003	987	-1,6	1,7	1,7
Industry	19'269	19'205	-0,3	32,2	32,8
Services	16'033	15'732	-1,9	26,8	26,8
Transport*	4'862	4'733	-2,7	8,1	8,1

* of which railways 2011: 3'061 GWh (2010: 3'163 GWh)



Gas

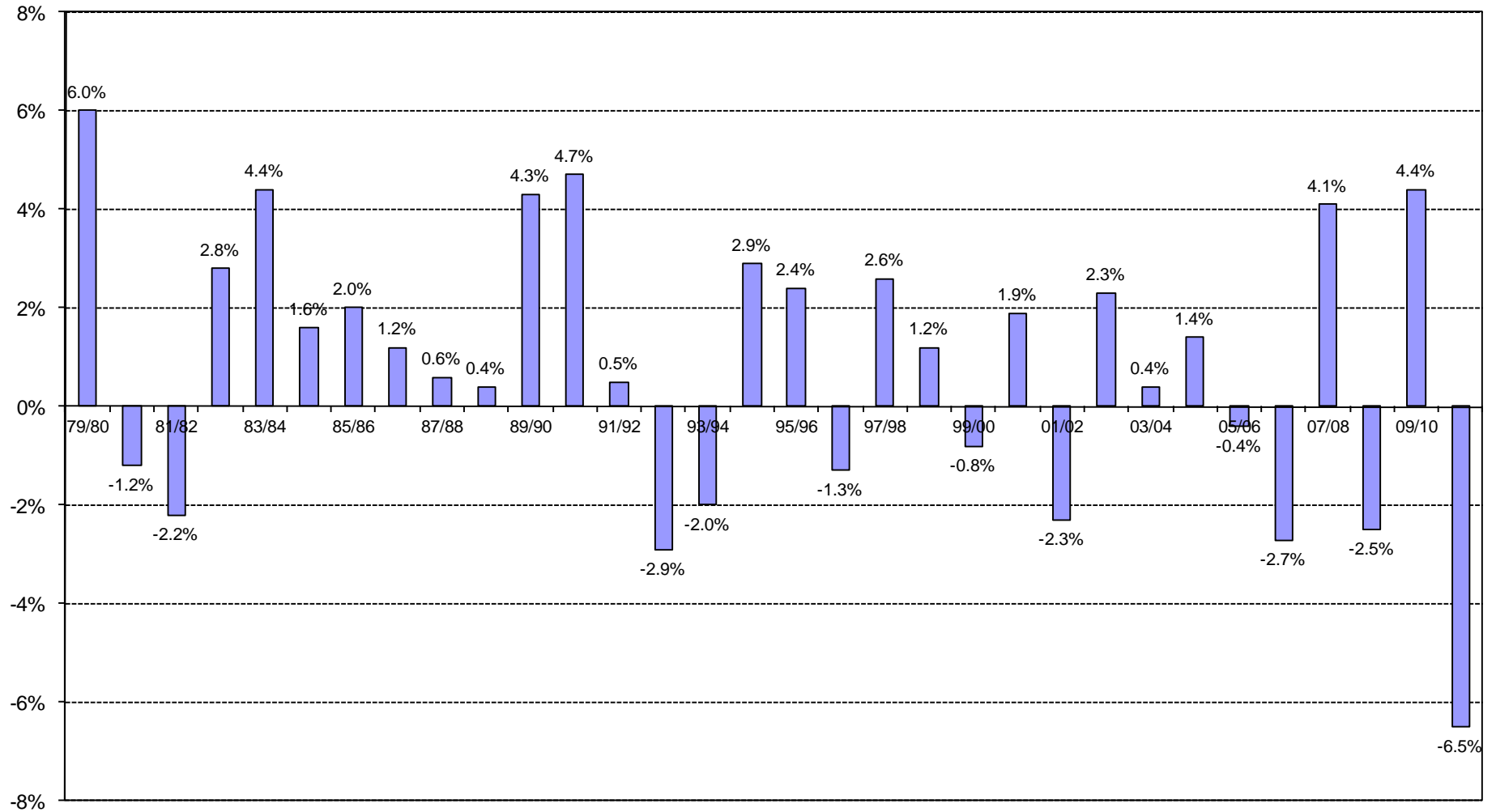
Table 4

	GWh* (1 GWh = 3,6 TJ)		TJ		Change in %
	2010	2011	2010	2011	2010-2011
Gas-works gas made of propane/butane	-	-	-	-	-
Feed-in of biogas into the gas distribution system	58	81	210	290	-
Imports of natural gas	35'004	31'048	126'010	111'770	-11,3
Total	35'062	31'129	126'220	112'060	-11,2
less:					
Natural gas used for district heating and electricity production	2'731	2'106	9'830	7'580	-
Distribution losses and gasworks' own consumption	246	217	880	780	-
Final consumption	32'085	28'806	115'510	103'700	-10,2

* Net calorific value (NCV: 36,3 MJ/Norm m³); in gas industry the gross calorific value (GCV: 40,3 MJ/Norm m³) is commonly used; NCV = 0,9 * GCV.



Rate of Change in Final Energy Consumption per Year





Final Energy Consumption since 1910

