



Schweizerische Eidgenossenschaft  
Confédération suisse  
Confederazione Svizzera  
Confederaziun svizra

Federal Department of the Environment,  
Transport, Energy and Communications DETEC  
**Swiss Federal Office of Energy SFOE**

June 2011

---

# Energy Consumption in Switzerland 2010

---

Extract from the Swiss Energy Statistics 2010

Available from August 2011 (German/French)

BBL/Bundespublikationen, 3003 Bern

Phone +41 31 325 50 50

Order by internet: [www.bundespublikationen.admin.ch](http://www.bundespublikationen.admin.ch)

Order number: 805.006.10 d/f

Internet: [www.bfe.admin.ch/statistics](http://www.bfe.admin.ch/statistics)

Mühlestrasse 4, CH-3063 Ittigen  
Postal address: CH-3003 Bern  
Phone +41 31 322 56 11, Fax +41 31 323 25 00  
[contact@bfe.admin.ch](mailto:contact@bfe.admin.ch)  
[www.bfe.admin.ch](http://www.bfe.admin.ch)



## Final Energy Consumption

Table 1

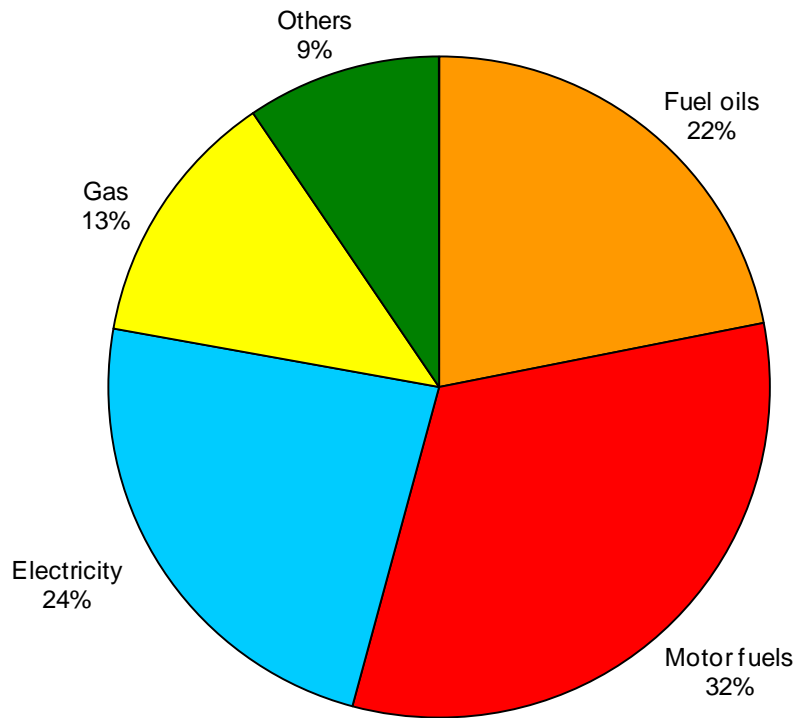
Energy source	Final consumption in original units		Final consumption in TJ		Change in % 2009-2010	Share in %	
	2009	2010	2009	2010		2009	2010
Petroleum products	11'328'000 t	11'588'000 t	483'180	494'260	2,3	55,3	54,2
Electricity	57'494 GWh	59'785 GWh	206'980	215'230	4,0	23,7	23,6
Gas *	28'947 GWh	32'085 GWh	104'210	115'510	10,8	11,9	12,7
Coal	243'000 t	246'000 t	6'290	6'420	2,1	0,7	0,7
Wood	-	-	35'380	38'090	7,7	4,1	4,2
District heating	4'256 GWh	4'794 GWh	15'320	17'260	12,7	1,8	1,9
Waste	-	-	9'480	10'030	5,8	1,1	1,1
Other renewable Energy	-	-	12'450	14'750	18,5	1,4	1,6
thereof Biofuels			350	420	20,0	0,04	0,05
Biogas **			1'510	1'620	7,3	0,17	0,18
Solar thermal			1'630	1'850	13,5	0,19	0,20
Ambient heat from soil, groundwater, air, etc.			8'960	10'850	21,1	1,03	1,19
Total final consumption	-	-	873'290	911'550	4,4	100	100

\* Net calorific value (NCV: 36,3 MJ/Norm m<sup>3</sup>); in gas industry the gross calorific value (GCV: 40,3 MJ/Norm m<sup>3</sup>) is commonly used; NCV = 0,9 \* GCV

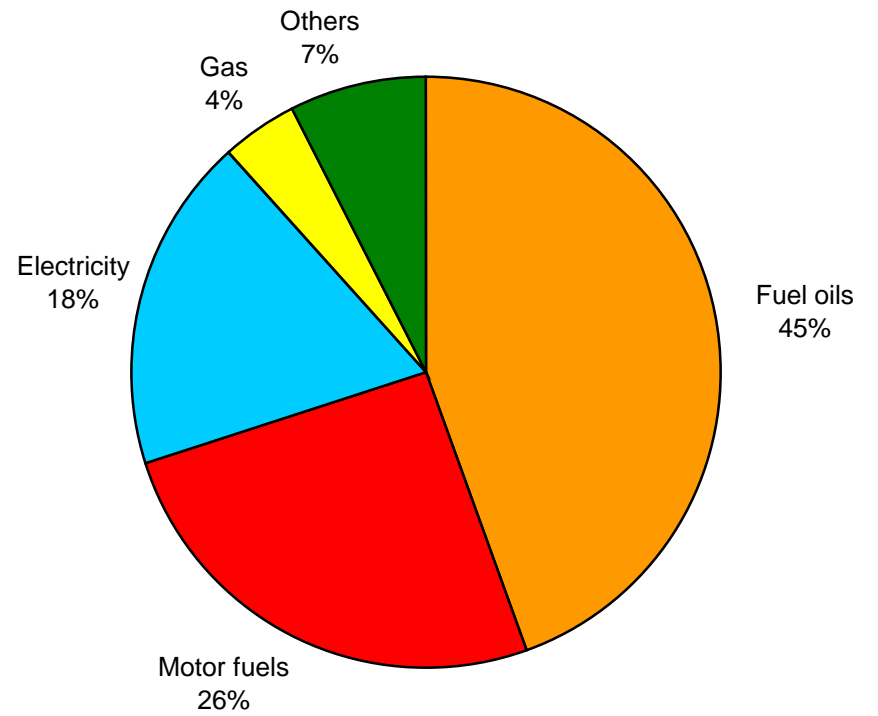
\*\* In 2010, 210 TJ of Biogas was injected into the gas distribution system and is included in Gas (2009: 130 TJ)



**Final Energy Consumption 2010**  
(Total: 911'550 TJ)



**Final Energy Consumption 1980**  
(Total: 697'110 TJ)





## Petroleum Products

Table 2

	Consumption in 1000 t		Consumption in TJ		Change in %	Share in %	
	2009	2010	2009	2010	2009-2010	2009	2010
<u>Fuel oils</u>							
Extra-light heating oil	4'260	4'494	181'470	191'460	5,5	37,6	38,7
Heavy fuel oil	66	54	2'710	2'230	-17,7	0,6	0,5
Petroleum coke	38	47	1'330	1'640	23,3	0,3	0,3
Others	100	91	4'600	4'190	-8,9	1,0	0,8
Total fuel oils	4'464	4'686	190'110	199'520	4,9	39,9	40,4
<u>Motor fuels</u>							
Gasoline	3'283	3'166	139'530	134'560	-3,6	28,9	27,2
Diesel oil	2'221	2'308	95'060	98'780	3,9	19,7	20,0
Aviation fuel	1'360	1'428	58'480	61'400	5,0	12,1	12,4
Total motor fuels	6'864	6'902	293'070	294'740	0,6	60,7	59,6
<u>Total petroleum products</u>	11'328	11'588	483'180	494'260	2,3	100	100



## Electricity

Table 3

	GWh (1 GWh = 3,6 TJ)		Change in % 2009-2010	Share in %	
	2009	2010		2009	2010
<u>Production:</u>					
Hydroelectric plants	37'136	37'450	0,8	55,8	56,5
Nuclear power plants	26'119	25'205	- 3,5	39,3	38,0
Conventional thermal power plants and other plants	3'239	3'597	11,1	4,9	5,4
<b>Domestic production</b>	<b>66'494</b>	<b>66'252</b>	<b>-0,4</b>	<b>100</b>	<b>100</b>
Consumption by storage pumps (-)	2'523	2'494	-1,1	3,8	3,8
<b>Net production</b>	<b>63'971</b>	<b>63'758</b>	<b>-0,3</b>	<b>96,2</b>	<b>96,2</b>
Import (+)	52'002	66'834	28,5	-	-
Export (-)	54'159	66'314	22,4	-	-
Export balance	-2'157	520	-	3,5	0,8
<b>Domestic consumption</b>	<b>61'814</b>	<b>64'278</b>	<b>4,0</b>	<b>100,0</b>	<b>100,0</b>
Losses (-)	4'320	4'493	4,0	7,0	7,0
<b>Final consumption</b>	<b>57'494</b>	<b>59'785</b>	<b>4,0</b>	<b>93,0</b>	<b>93,0</b>
<u>Final consumption by sector:</u>				100	100
Households	17'920	18'618	3,9	31,2	31,2
Agriculture	1'002	1'003	0,1	1,7	1,7
Industry	18'209	19'269	5,8	31,7	32,2
Services	15'663	16'033	2,4	27,2	26,8
Transport*	4'700	4'862	3,4	8,2	8,1

\* of which railways 2010: 3'163 GWh (2009: 3'064 GWh)



## Gas

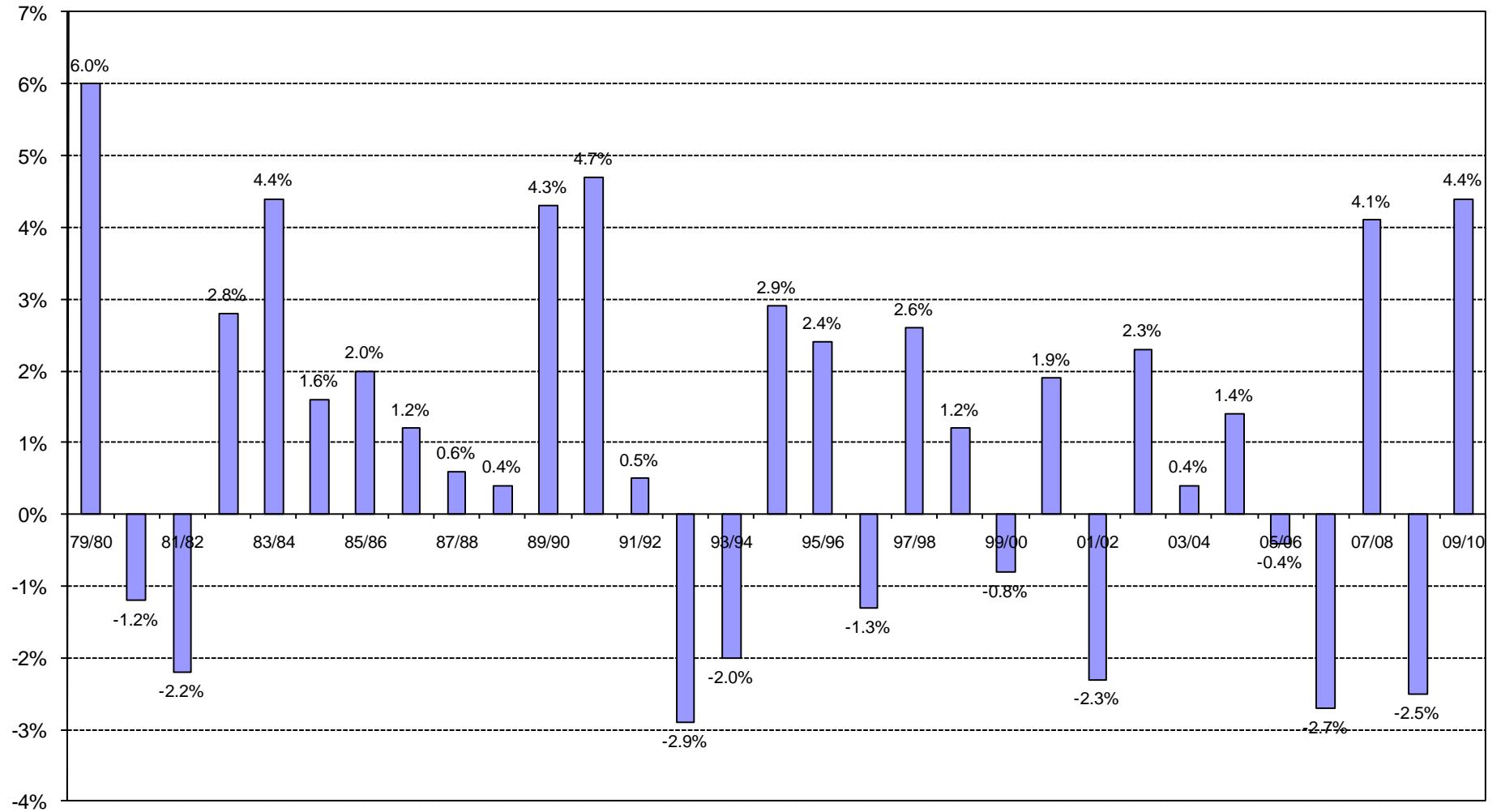
Table 4

	GWh* (1 GWh = 3,6 TJ)		TJ		Change in %
	2009	2010	2009	2010	2009-2010
Gas-works gas made of propane/butane	-	-	-	-	-
Feed-in of biogas into the gas distribution system	37	58	130	210	-
Imports of natural gas	31'335	35'004	112'810	126'010	11,7
Total	31'372	35'062	112'940	126'220	11,8
less:					
Natural gas used for district heating and electricity production	2'206	2'731	7'940	9'830	-
Distribution losses and gasworks' own consumption	219	246	790	880	-
Final consumption	28'947	32'085	104'210	115'510	10,8

\* Net calorific value (NCV: 36,3 MJ/Norm m<sup>3</sup>); in gas industry the gross calorific value (GCV: 40,3 MJ/Norm m<sup>3</sup>) is commonly used; NCV = 0,9 \* GCV.



### Rate of Change in Final Energy Consumption per Year





### Final Energy Consumption since 1910

