

Energy consumption in Switzerland 2001: a survey

Excerpt from the Swiss global energy statistics 2001

Available from August 2001 (german/french):

SFBL/Distribution of Publications, 3003 Bern

Tel: 031/350 00 05

Ordering on Internet: www.bbl.admin.ch/bundespublikationen

Order number: 805.006.01 d/f

Internet.: <http://www.energie-schweiz.ch/bfe/de/statistik/gesamtenergie/>

July 2002

Final Energy Consumption

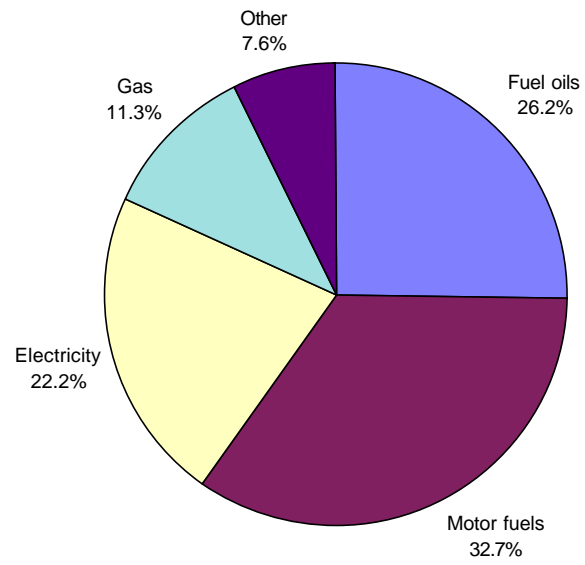
Table 1

Energy sources	Final consumption in original units		Final consumption in TJ		Change in % 2000-2001	Share in %	
	2001	2000	2001	2000		2001	2000
Petroleum products	12'066'000 t	11'966'000 t	514'540	510'360	0,8	59,0	59,7
Electricity	53'749 GWh	52'373 GWh	193'500	188'540	2,6	22,2	22,0
Gas *	27'455 GWh	26'451 GWh	98'840	95'220	3,8	11,3	11,1
Coal	221 '000 t	208'000 t	6'170	5'850	5,5	0,7	0,7
Wood	2'457'000m ³	2'301'000m ³	21'320	19'970	6,8	2,4	2,3
Long-distance heating	3'984 GWh	3'689 GWh	14'340	13'280	8,0	1,6	1,6
Waste	-	-	16'810	15'740	6,8	1,9	1,8
Other renewable energy**	1'974 GWh	1'758 GWh	7'110	6'330	12,3	0,8	0,7
Total consumption	-	-	872'630	855'290	2,0	100	100

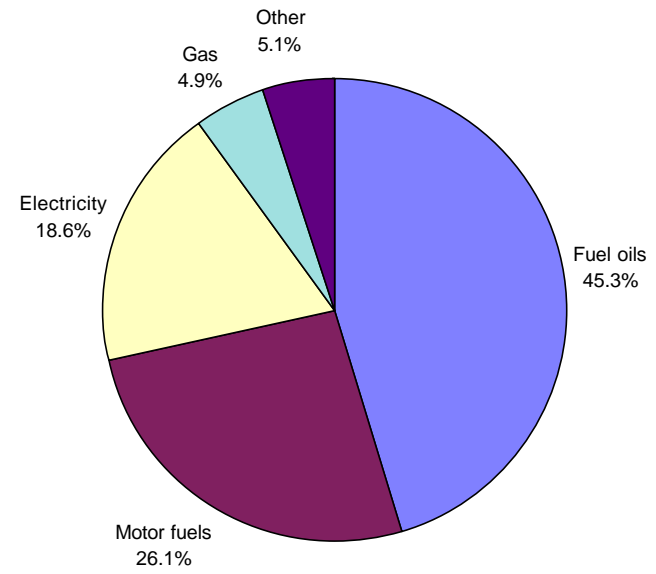
* Data in GWh: gross calorific value; data in TJ: net calorific value

** Sun, wind, biogas, environmental heat

Final energy consumption 2001 (Total: 872'630 TJ)



Final energy consumption 1980 (Total: 683'870 TJ)



Petroleum Products

Table 2

	Consumption in 1000 t		Consumption in TJ		Change in %	Share in %	
	2001	2000	2001	2000	2000-2001	2001	2000
<u>Fuel oils</u>							
Extra-light fuel oil	5'043	4'803	214'840	204'610	5,0	41,8	40,1
Heavy fuel oil	195	146	8'030	6'010	33,6	1,6	1,2
Petroleum coke	12	16	420	560	- 25,0	0,1	0,1
Other	121	129	5'570	5'930	- 6,1	1,1	1,2
Total fuel oils	5'371	5'094	228'860	217'110	5,4	44,5	42,5
<u>Motor fuels</u>							
Gasoline	3'873	3'983	164'600	169'280	- 2,8	32,0	33,2
Diesel oil	1'330	1'307	56'920	55'940	1,8	11,1	11,0
Aviation fuel	1'492	1'582	64'160	68'030	- 5,7	12,5	13,3
Total motor fuels	6'695	6'872	285'680	293'250	- 2,6	55,5	57,5
<u>Total petroleum products</u>	12'066	11'966	514'540	510'360	0,8	100	100

Electricity

Table 3

	GWh (1 GWh = 3,6 TJ)		Change in % 2000-2001	Share in %	
	2001	2000		2001	2000
<u>Production:</u>					
Hydroelectric power station	42'261	37'851	11,7	60,2	57,9
Nuclear power station	25'293	24'949	1,4	36,0	38,2
Fossil-fuelled power station	2'620	2'548	2,8	3,7	3,9
National production	70'174	65'348	7,4	100	100
Pumped storage (-)	1'947	1'974	- 1,4	2,8	3,0
Net production	68'227	63'374	7,7	97,2	97,0
Export (-)	68'407	46'990	45,6	-	-
Import (+)	57'963	39'920	45,2	-	-
Export balance	10'444	7'070	42,1	14,3	10,8
National consumption	57'783	56'304	2,6	82,3	86,2
Losses (-)	4'034	3'931	2,6	6,0	6,0
Final consumption	53'749	52'373	2,6	76,6	80,2
<u>Final consumption by sectors:</u>					
Households	16'080	15'727	2,2	29,9	30,0
Agriculture	1'019	991	2,8	1,9	1,9
Industry and crafts	18'351	18'079	1,5	34,1	34,5
Services	14'002	13'405	4,5	26,1	25,6
Transport*	4'297	4'171	3,0	8,0	8,0

*railways' share 2001: 2'698GWh (2000: 2640 GWh)

Gas

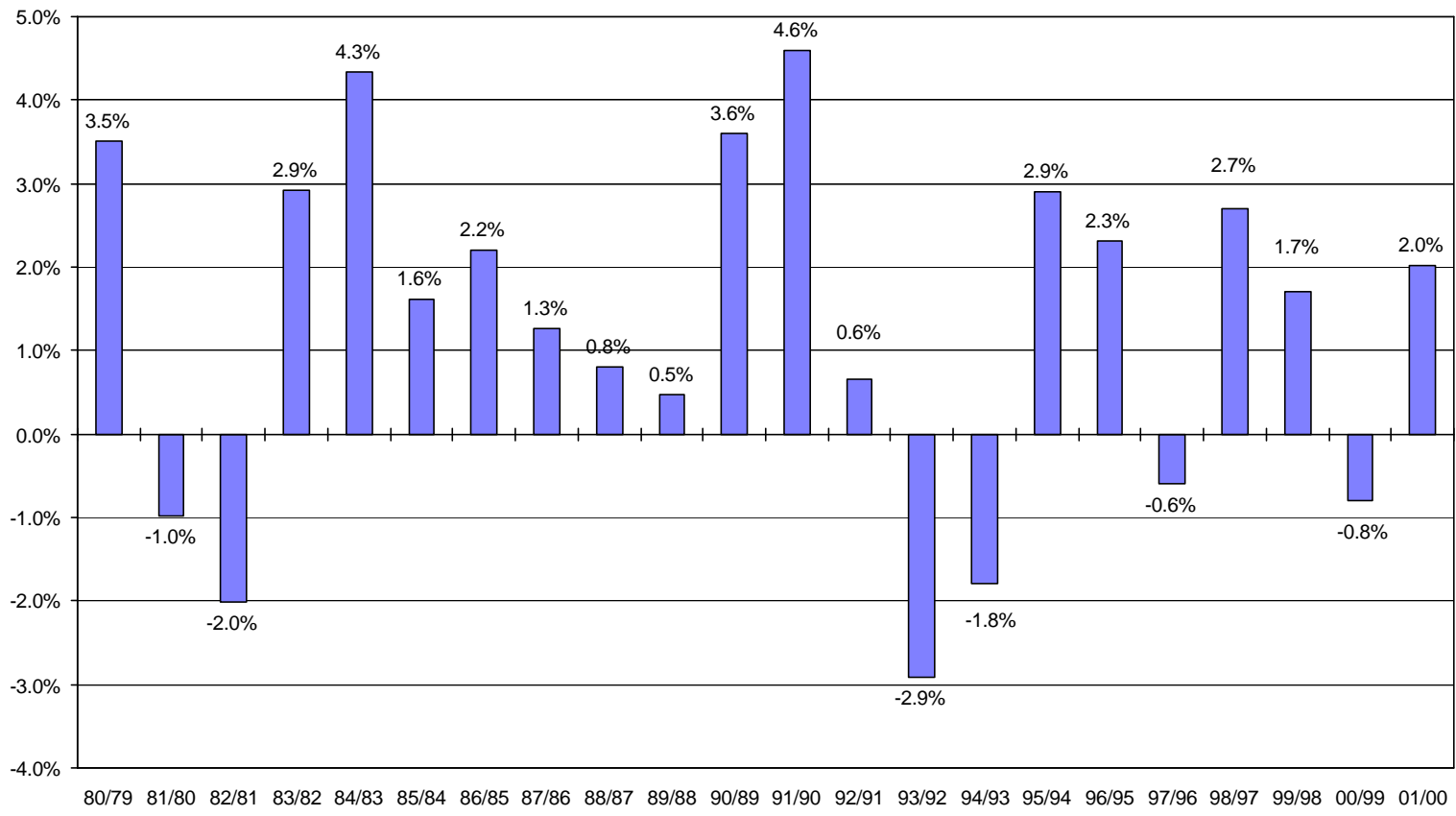
Table 4

	GWh*		TJ**		Change in %
	2001	2000	2001	2000	2000-2001
Town gas production from propane/butane	25	26	90	90	0,0
Imports of natural gas	29'456	28'299	106'040	101'880	4,1
Total	29'481	28'325	106'130	101'970	4,1
minus:					
natural gas used for long-distance heating and to generate electricity	1'760	1'619	6'330	5'830	8,6
Distribution network losses and gasworks' own consumption	266	255	960	920	4,3
Final consumption	27'455	26'451	98'840	95'220	3,8

* Gross calorific value (higher heating value; accounting unit within gas industry): 40,3 MJ/Norm m³

** Net calorific value (to allow comparison with other energy sources): 36,3 MJ/Norm m³ = 0,9 * higher heating value

Rate of Change in Final Energy Consumption per Year



Final Energy Consumption since 1910

