



Schweizerische Eidgenossenschaft
Confédération suisse
Confederazione Svizzera
Confederaziun svizra

Federal Department of the Environment,
Transport, Energy and Communications DETEC

Swiss Federal Office of Energy SFOE

June 2023

Energy Consumption in Switzerland 2022

Extract from the Swiss Overall Energy Statistics 2022

Available from August 2023 (German/French)

BBL/Bundespublikationen, 3003 Bern

Phone +41 58 465 50 50

Order by internet: www.bundespublikationen.admin.ch

Order number: 805.006.22 d/f

Internet: www.bfe.admin.ch/statistics

Switzerland's energy balance for 2022 (in TJ)

Table 1

	Wood	Coal	Waste	Crude oil	Petroleum products	Gas	Hydro	Nuclear	Other renewable energy	Electricity	District heating	Total
Inland production	45'430		58'540			0	120'600		44'650			269'220
+ Imports	2'390	3'870		133'310	246'440	106'720		252'140	6'270	119'220		870'360
+ Exports	-110	0			-25'170					-107'040		-132'320
+ Change in stock ¹		-20		-600	18'740							18'120
= Total primary energy supply	47'710	3'850	58'540	132'710	240'010	106'720	120'600	252'140	50'920	12'180		1'025'380
+ Transformation sector:												
• Hydro plants							-120'600			120'600		0
• Nuclear plants								-252'140		83'210	1'390	-167'540
• Conventional thermal electricity, CHP and heat plants	-3'720	0	-46'260		-420	-6'460				7'060	22'320	-27'480
• Gas-fired power plants						0						0
• Refinery				-132'710	132'710							0
• Renewables	-2'720					1'520			-18'660	17'740		-2'120
+ Own use, distribution losses, used for storage					-6'320	-130				-35'480	-2'350	-44'280
+ Non-energy use					-18'890							-18'890
= Total final consumption	41'270	3'850	12'280		347'090	101'650			32'260	205'310	21'360	765'070

¹ + decrease in stock
- increase in stock

Final Energy Consumption

Table 2

Energy source	Final consumption in original units		Final consumption in TJ		Change in %	Share in %	
	2021	2022	2021	2022	2021-2022	2021	2022
Petroleum products	8'043'000 t	8'090'000 t	344'920	347'090	0.6	43.3	45.4
Electricity	58'113 GWh	57'030 GWh	209'210	205'310	-1.9	26.3	26.8
Gas¹	34'029 GWh	28'235 GWh	122'500	101'650	-17.0	15.4	13.3
Coal	152'000 t	159'000 t	3'700	3'850	4.1	0.5	0.5
Wood	-		46'900	41'270	-12.0	5.9	5.4
District heating	6'414 GWh	5'933 GWh	23'090	21'360	-7.5	2.9	2.8
Waste	-	-	12'380	12'280	-0.8	1.6	1.6
Other renewable Energy thereof:	-	-	33'110	32'260	-2.6	4.2	4.2
Biogenic fuels	-	-	6'590	6'730	2.1	0.8	0.9
Biogas ²	-	-	1'890	1'900	0.5	0.2	0.2
Solar thermal	-	-	2'660	2'650	-0.4	0.3	0.3
Ambient heat from soil, groundwater, air, etc.	-	-	21'970	20'980	-4.5	2.8	2.7
Total final consumption	-	-	795'810	765'070	-3.9	100.0	100.0

¹ Net calorific value (NCV: 36,3 MJ/Norm m3); in gas industry the gross calorific value (GCV: 40,3 MJ/Norm m3) is commonly used; NCV = 0,9 * GCV

² In 2022, 1'520 TJ of Biogas was injected into the gas distribution system and is included in Gas (2021: 1'330 TJ)

Petroleum Products

Table 3

Energy source	Final consumption in t		Final consumption in TJ		Change in %	Share in %	
	2021	2022	2021	2022	2021-2022	2021	2022
Fuel oils	2'604'000	2'117'000	111'710	90'770	-18.7	32.4	26.2
thereof:							
Extra-light heating oil	2'517'000	2'026'000	107'980	86'920	-19.5	31.3	25.0
Heavy fuel oil	0	0	0	0	-	0.0	0.0
Petroleum coke	19'000	23'000	600	730	21.7	0.2	0.2
Others	68'000	68'000	3'130	3'130	0.0	0.9	0.9
Motor fuels	5'439'000	5'973'000	233'210	256'310	9.9	67.6	73.8
thereof:							
Gasoline	2'065'000	2'005'000	87'970	85'410	-2.9	25.5	24.6
Aviation fuel	787'000	1'386'000	34'000	59'880	76.1	9.9	17.3
Diesel oil	2'587'000	2'582'000	111'240	111'030	-0.2	32.3	32.0
Final consumption	8'043'000	8'090'000	344'920	347'090	0.6	100.0	100.0

Electricity

Table 4

	GWh (1 GWh =3.6 TJ)		Change in %	Share in %	
	2021	2022	2021-2022	2021	2022
<u>Production</u>					
Hydroelectric plants	39'500	33'501	-15.2	61.5	52.8
Nuclear power plants	18'530	23'113	24.7	28.9	36.4
Conventional thermal power plants:	2'319	1'963	-15.4	3.6	3.1
thereof:					
non-renewable	1'206	871	-27.8	1.9	1.4
renewable	1'113	1'092	-1.9	1.7	1.7
Miscellaneous renewables:	3'866	4'927	27.4	6.0	7.8
thereof:					
Wood	475	509	7.2	0.7	0.8
Biogas	405	410	1.2	0.6	0.6
Photovoltaics	2'842	3'858	35.7	4.4	6.1
Wind	145	150	3.4	0.2	0.2
Domestic production	64'215	63'504	-1.1	100.0	100.0
Consumption by storage pumps (-)	4'145	5'567	34.3	6.5	8.8
Net production	60'070	57'937	-3.6	93.5	91.2
Import (+) ¹	31'532	33'117	5.0	-	-
Export (-) ¹	29'119	29'734	2.1	-	-
Domestic consumption	62'483	61'320	-1.9	100.0	100.0
Losses (-)	4'370	4'290	-1.8	7.0	7.0
Final consumption	58'113	57'030	-1.9	93.0	93.0
<u>Final consumption by sector:</u>				100	100
Households	20'173	19'355	-4.1	34.7	33.9
Agriculture	962	954	-0.8	1.7	1.7
Industry	17'538	17'307	-1.3	30.2	30.3
Services	14'614	14'418	-1.3	25.1	25.3
Transport ²	4'826	4'996	3.5	8.3	8.8

¹ physical

² thereof railways 2022: 2'981 GWh (2021: 2'933 GWh)

thereof electromobility 2022: 588 GWh (2021: 453 GWh)

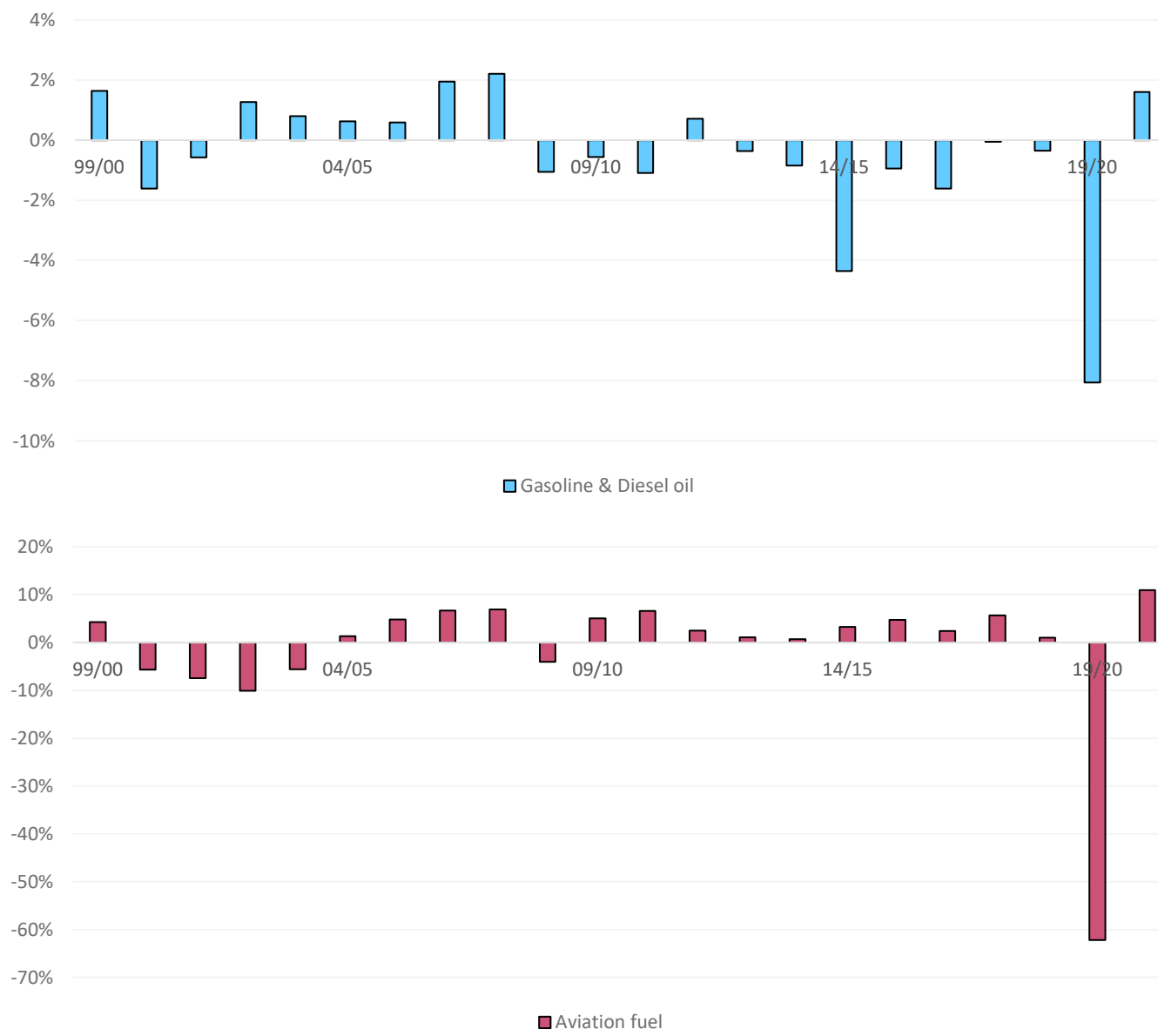
Gas

Table 5

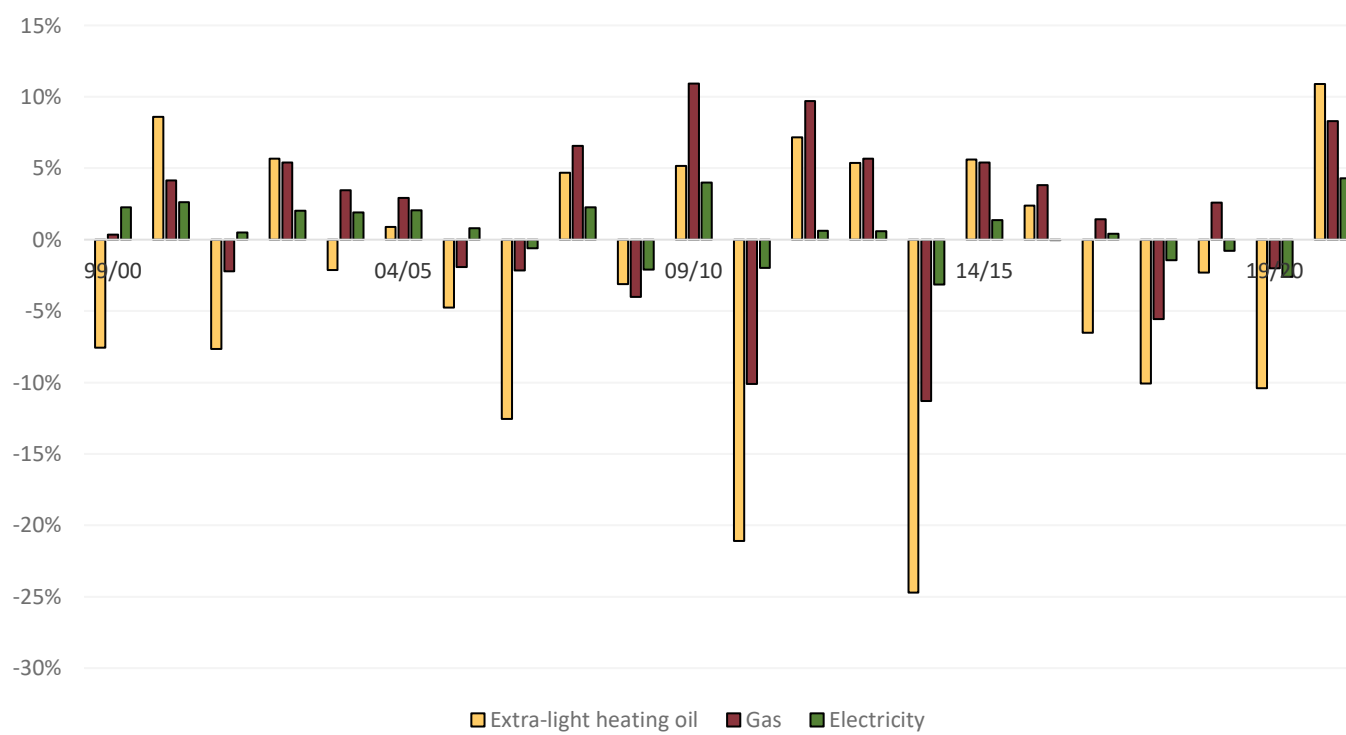
	GWh ¹ (1 GWh =3.6 TJ)		TJ		Change in %
	2021	2022	2021	2022	2021-2022
Imports of natural gas	36'041	29'644	129'750	106'720	-17.7
Feed-in of biogas into the gas distribution system	370	423	1'330	1'520	14.3
Total	36'411	30'067	131'080	108'240	-17.4
Natural gas used for district heating and electricity production (-)	2'339	1'794	8'420	6'460	
Distribution losses and gasworks' own consumption (-)	43	38	160	130	
Final consumption	34'029	28'235	122'500	101'650	-17.0

¹ net calorific value (NCV: 36,3 MJ/Norm m3); in gas industry the gross calorific value (GCV: 40,3 MJ/Norm m3) is commonly used; NCV = 0,9 * GCV.

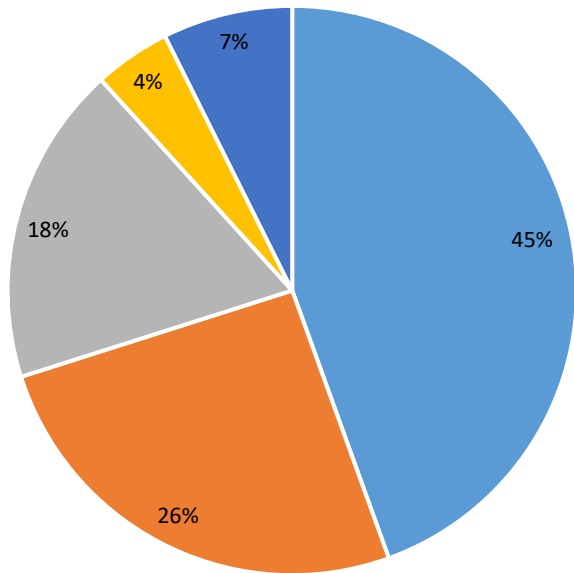
Changes in consumption of gasoline & diesel oil and aviation fuel, 2000-2022



Changes in consumption of electricity, gas and heating oil, 2000-2022



Final Energy Consumption 1980
(Total: 698'290 TJ)



Final Energy Consumption 2022
(Total: 765'070 TJ)

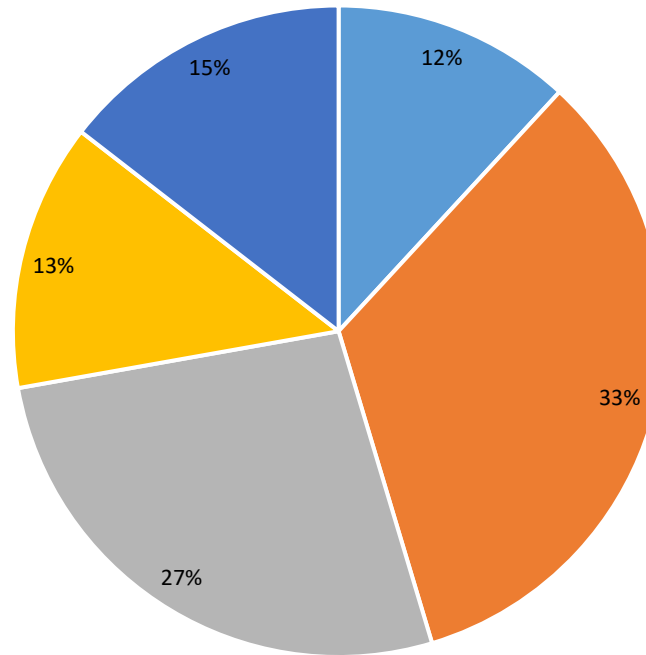
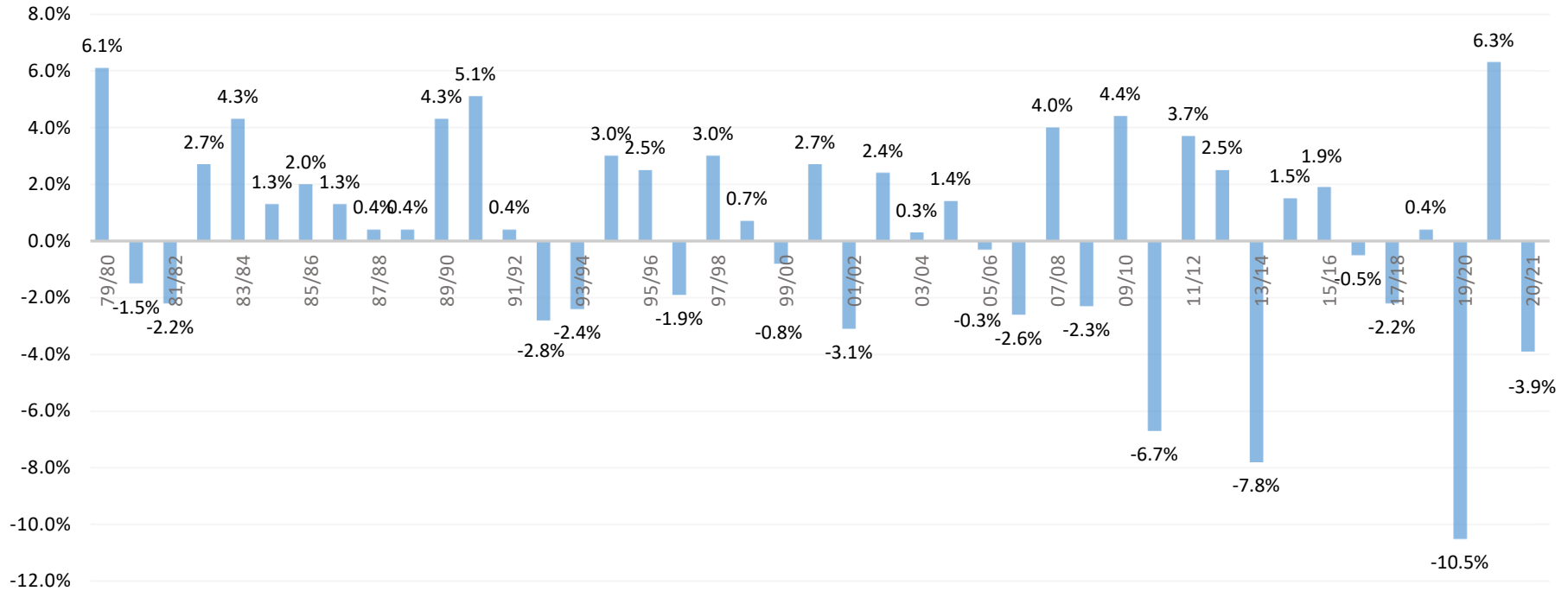


Figure 3

- Fuel oils
- Motor fuels
- Electricity
- Gas
- Others

Rate of Change in Final Energy Consumption per Year

Figure 4



Final Energy Consumption since 1910

Figure 5

