

WOCHENBERICHT

BULLETTIN HEBDOMADAIRE

Bundesamt für Energie BFE

SPEICHERINHALT

CONTENU DES BASSINS D'ACCUMULATION

2014	Speicherinhalt - Contenu des bassins d'accumulation										Rhein in Rheinfelden - Rhin à Rheinfelden		
	Wallis - Valais		Graubünden - Grisons		Tessin - Tessin		Übrige CH - Reste CH		Total Schweiz- Suisse		Langjähriger Tagesmittelwert Moyenne journalière de longue date	Aufgetretene Wasserführung Débit effectif	
	GWh 4'000	%	GWh 1'980	%	GWh 1'230	%	GWh 1'590	%	GWh 8'800	%	m³/s / 1933-2012	m³/s / 12:00h	%
Montag / Lundi 00:00h													
06.01.2014	2'227	55.7%	1'264	63.8%	850	69.1%	904	56.9%	5'245	59.6%	790	966	122%
13.01.2014	2'146	53.7%	1'229	62.1%	818	66.5%	896	56.4%	5'089	57.9%	801	769	96%
20.01.2014	2'031	51.0%	1'157	58.4%	777	63.7%	852	53.4%	4'817	54.8%	761	874	115%
27.01.2014	1'891	47.3%	1'085	54.8%	739	59.9%	797	50.2%	4'512	51.3%	780	790	101%
03.02.2014	1'728	43.3%	1'016	51.3%	690	56.1%	736	46.3%	4'170	47.4%	778	727	93%
10.02.2014	1'581	39.6%	948	47.9%	636	51.7%	685	43.1%	3'850	43.8%	851	804	94%
17.02.2014	1'417	35.5%	875	44.2%	577	46.9%	655	41.2%	3'524	40.1%	793	952	120%
24.02.2014	1'294	32.4%	808	40.8%	517	42.0%	623	39.2%	3'242	36.9%	798	762	95%
03.03.2014	1'158	29.0%	728	36.8%	462	37.6%	569	35.8%	2'917	33.2%	830	755	91%
10.03.2014	1'034	25.9%	646	32.6%	404	32.8%	507	31.9%	2'591	29.5%	798	679	85%
17.03.2014	940	23.5%	588	29.7%	369	30.0%	486	30.6%	2'383	27.1%	837	617	74%
24.03.2014	870	21.8%	546	27.6%	356	28.9%	477	30.0%	2'249	25.6%	928	867	93%
31.03.2014	706	17.7%	443	22.4%	309	25.1%	406	25.5%	1'864	21.2%	951	706	74%
07.04.2014	603	15.1%	370	18.7%	281	22.8%	374	23.5%	1'628	18.5%	978	686	70%
14.04.2014	514	12.9%	352	17.8%	279	22.7%	370	23.3%	1'515	17.2%	1'020	797	78%
21.04.2014	453	11.3%	339	17.1%	268	21.8%	335	21.1%	1'395	15.9%	1'039	644	62%
28.04.2014	416	10.4%	331	16.7%	265	21.5%	365	23.0%	1'377	15.7%	1'080	867	80%
05.05.2014	385	9.6%	346	17.5%	279	22.7%	395	24.8%	1'405	16.0%	1'142	1'226	107%
12.05.2014	365	9.1%	389	19.6%	303	24.6%	438	27.5%	1'495	17.0%	1'225	1'073	88%
19.05.2014	331	8.3%	387	19.5%	308	25.0%	447	28.1%	1'473	16.7%	1'291	1'023	79%
26.05.2014	362	9.1%	506	25.6%	378	30.7%	503	31.6%	1'749	19.9%	1'305	1'175	90%
02.06.2014	386	9.7%	607	30.7%	443	36.0%	532	33.5%	1'968	22.4%	1'408	1'030	73%
09.06.2014	477	11.9%	733	37.0%	515	41.9%	580	36.5%	2'305	26.2%	1'469	867	59%
16.06.2014	776	19.4%	960	48.5%	650	52.8%	708	44.5%	3'094	35.2%	1'514	980	65%
23.06.2014	956	23.9%	1'050	53.0%	698	56.7%	731	46.0%	3'435	39.1%	1'515	755	50%
30.06.2014	1'166	29.2%	1'198	60.5%	793	64.5%	792	49.8%	3'949	44.9%	1'507	1'204	80%

Quelle Daten Wasserführung Rhein in Rheinfelden: Bundesamt für Umwelt BAFU

2014	Speicherinhalt - Contenu des bassins d'accumulation										Rhein in Rheinfelden - Rhin à Rheinfelden		
	Wallis - Valais		Graubünden - Grisons		Tessin - Tessin		Übrige CH - Reste CH		Total Schweiz- Suisse		Langjähriger Tagesmittelwert Moyenne journalière de longue date m³/s / 1933-2012	Aufgetretene Wasserführung Débit effectif m³/s / 12:00h	
	GWh	%	GWh	%	GWh	%	GWh	%	GWh	%			%
	4'000		1'980		1'230		1'590		8'800				
Montag / Lundi 00:00h													
07.07.2014	1'356	33.9%	1'307	66.0%	855	69.5%	843	53.0%	4'361	49.6%	1'457	1'277	88%
14.07.2014	1'545	38.7%	1'423	71.9%	923	75.0%	967	60.8%	4'858	55.2%	1'420	2'126	150%
21.07.2014	1'783	44.6%	1'497	75.6%	961	78.1%	1'013	63.7%	5'254	59.7%	1'405	1'798	128%
28.07.2014	2'095	52.4%	1'588	80.2%	994	80.8%	1'134	71.3%	5'811	66.1%	1'331	2'118	159%
04.08.2014	2'409	60.3%	1'663	84.0%	1'046	85.0%	1'267	79.7%	6'385	72.6%	1'247	2'182	175%
11.08.2014	2'680	67.1%	1'744	88.1%	1'067	86.7%	1'317	82.8%	6'808	77.4%	1'254	2'126	170%
18.08.2014	2'926	73.2%	1'800	90.9%	1'092	88.8%	1'353	85.1%	7'171	81.5%	1'186	1'403	118%
25.08.2014	3'062	76.6%	1'768	89.3%	1'074	87.3%	1'319	83.0%	7'223	82.1%	1'184	1'167	99%
01.09.2014	3'265	81.7%	1'753	88.5%	1'068	86.8%	1'370	86.2%	7'456	84.7%	1'147	1'746	152%
08.09.2014	3'383	84.7%	1'727	87.2%	1'056	85.9%	1'357	85.3%	7'523	85.5%	1'047	1'138	109%
15.09.2014	3'492	87.4%	1'721	86.9%	1'042	84.7%	1'326	83.4%	7'581	86.1%	1'024	1'001	98%
22.09.2014	3'563	89.2%	1'707	86.2%	1'032	83.9%	1'281	80.6%	7'583	86.2%	981	1'152	117%
29.09.2014	3'565	89.2%	1'692	85.5%	1'019	82.8%	1'269	79.8%	7'545	85.7%	972	918	94%
06.10.2014	3'529	88.3%	1'663	84.0%	999	81.2%	1'220	76.7%	7'411	84.2%	884	830	94%
13.10.2014	3'533	88.3%	1'701	85.9%	1'028	83.6%	1'195	75.2%	7'457	84.7%	885	769	87%
20.10.2014	3'566	89.2%	1'798	90.8%	1'086	88.3%	1'221	76.8%	7'671	87.2%	847	735	87%
27.10.2014	3'547	88.7%	1'777	89.7%	1'057	85.9%	1'226	77.1%	7'607	86.4%	805	939	117%
03.11.2014	3'470	86.8%	1'770	89.4%	1'013	82.4%	1'176	74.0%	7'429	84.4%	799	796	100%
10.11.2014	3'366	84.2%	1'780	89.9%	1'030	83.7%	1'150	72.3%	7'326	83.3%	791	932	118%
17.11.2014	3'285	82.1%	1'803	91.1%	1'046	85.0%	1'158	72.8%	7'292	82.9%	865	1'354	157%
24.11.2014	3'165	79.1%	1'748	88.3%	1'016	82.6%	1'133	71.3%	7'062	80.3%	842	987	117%
01.12.2014	3'054	76.4%	1'692	85.5%	980	79.7%	1'106	69.6%	6'832	77.6%	824	857	104%
08.12.2014	2'838	71.0%	1'573	79.4%	946	76.9%	1'024	64.4%	6'381	72.5%	831	682	82%
15.12.2014	2'634	65.9%	1'463	73.9%	879	71.5%	929	58.4%	5'905	67.1%	812	615	76%
22.12.2014	2'518	63.0%	1'392	70.3%	827	67.2%	909	57.2%	5'646	64.2%	833	817	98%
29.12.2014	2'468	61.7%	1'376	69.5%	798	64.9%	926	58.2%	5'568	63.3%	803	648	81%

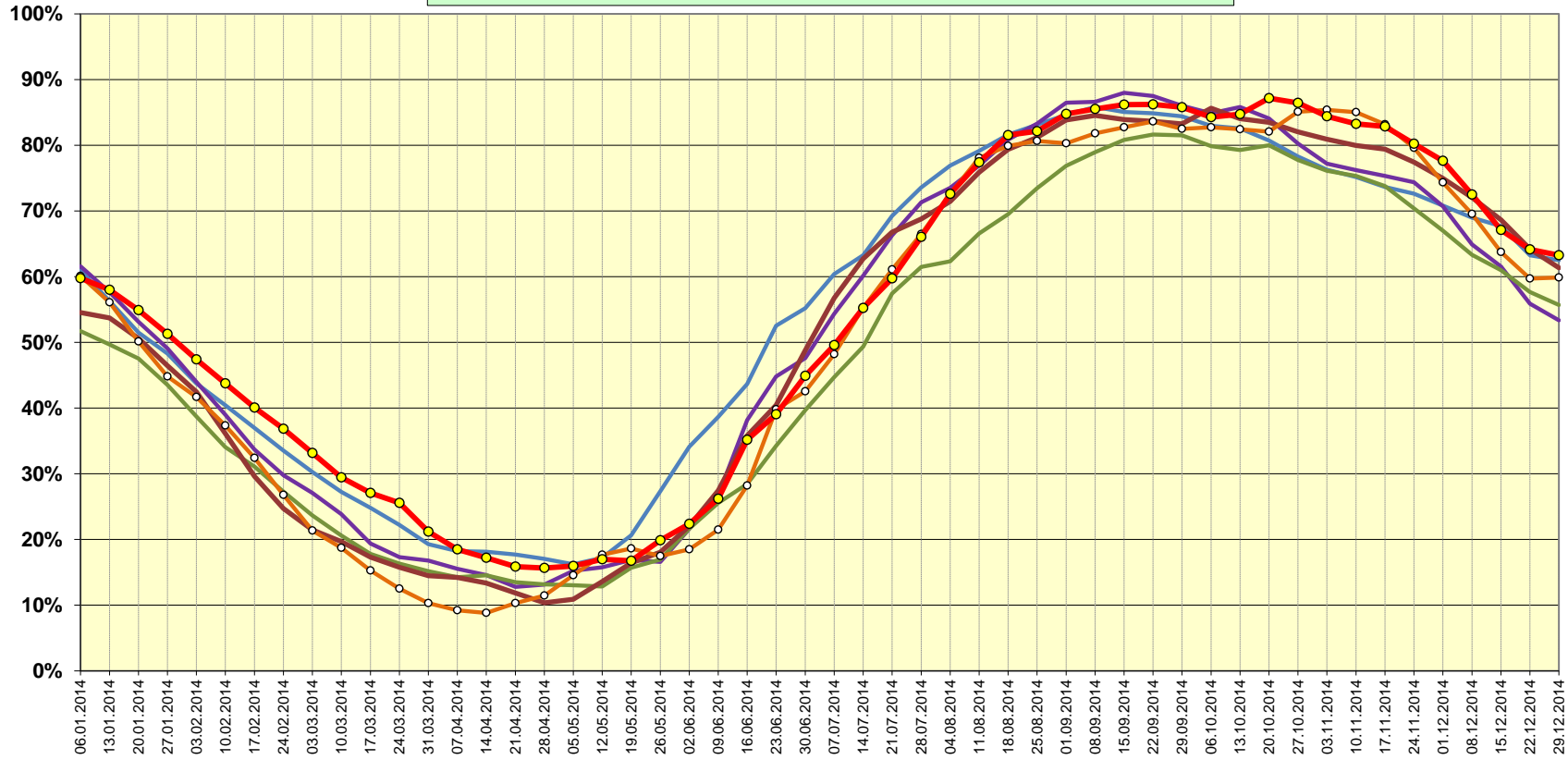
Quelle Daten Wasserführung Rhein in Rheinfelden: Bundesamt für Umwelt BAFU



Schweizerische Eidgenossenschaft
Confédération suisse
Confederazione Svizzera
Confederaziun svizra

Bundesamt für Energie BFE
Office fédéral de l'énergie OFEN

Speicherinhalt Schweiz (100% = 8'800 GWh)





Schweizerische Eidgenossenschaft
Confédération suisse
Confederazione Svizzera
Confederaziun svizra

Verlauf des Speicherinhalts 2012/2013 (Stand Ende Monat) (Schwankungsbreite hoch / tief 1972/73 bis 2012/13)

100% = 8'800 GWh

Bundesamt für Energie BFE
Office fédéral de l'énergie OFEN

