



Schweizerische Eidgenossenschaft
Confédération suisse
Confederazione Svizzera
Confederaziun svizra

WOCHENBERICHT

BULLETIN HEBDOMADAIRE

Bundesamt für Energie BFE

SPEICHERINHALT

CONTENU DES BASSINS D'ACCUMULATION

2012	Speicherinhalt - Contenu des bassins d'accumulation										Rhein in Rheinfelden - Rhin à Rheinfelden		
	Wallis - Valais		Graubünden - Grisons		Tessin - Tessin		Übrige CH - Reste CH		Total Schweiz- Suisse		Langjähriger Tagesmittelwert Moyenne journalière de longue date m³/s / 1933-2010	Aufgetretene Wasserführung Débit effectif m³/s / 12:00h	
	GWh 3'980	%	GWh 1'975	%	GWh 1'225	%	GWh 1'590	%	GWh 8'770	%			%
Montag / Lundi 00:00h													
02.01.2012	2'182	54.8%	1'001	50.7%	555	45.3%	1'051	65.7%	4'789	54.5%	773	1'584	205%
09.01.2012	2'169	54.5%	973	49.3%	541	44.2%	1'035	64.7%	4'718	53.7%	741	1'591	215%
16.01.2012	2'007	50.4%	927	46.9%	514	42.0%	996	62.3%	4'444	50.6%	770	980	127%
23.01.2012	1'793	45.1%	859	43.5%	485	39.6%	942	58.9%	4'079	46.5%	740	1'381	187%
30.01.2012	1'582	39.7%	797	40.4%	459	37.5%	891	55.7%	3'729	42.5%	753	1'002	133%
06.02.2012	1'300	32.7%	693	35.1%	417	34.0%	763	47.7%	3'173	36.1%	827	811	98%
13.02.2012	1'029	25.9%	569	28.8%	371	30.3%	631	39.4%	2'600	29.6%	828	693	84%
20.02.2012	826	20.8%	472	23.9%	337	27.5%	536	33.5%	2'171	24.7%	800	638	80%
27.02.2012	697	17.5%	407	20.6%	309	25.2%	471	29.4%	1'884	21.5%	810	699	86%
05.03.2012	628	15.8%	372	18.8%	278	22.7%	451	28.2%	1'729	19.7%	821	783	95%
12.03.2012	537	13.5%	325	16.5%	251	20.5%	407	25.4%	1'520	17.3%	855	679	79%
19.03.2012	483	12.1%	298	15.1%	226	18.4%	378	23.6%	1'385	15.8%	874	699	80%
26.03.2012	407	10.2%	289	14.6%	217	17.7%	359	22.4%	1'272	14.5%	950	769	81%
02.04.2012	375	9.4%	294	14.9%	209	17.1%	371	23.2%	1'249	14.2%	966	783	81%
09.04.2012	331	8.3%	284	14.4%	198	16.2%	362	22.6%	1'175	13.4%	1'020	930	91%
16.04.2012	262	6.6%	262	13.3%	175	14.3%	342	21.4%	1'041	11.9%	1'022	1'329	130%
23.04.2012	203	5.1%	249	12.6%	155	12.7%	303	18.9%	910	10.4%	1'062	959	90%
30.04.2012	168	4.2%	272	13.8%	168	13.7%	350	21.9%	958	10.9%	1'098	1'197	109%
07.05.2012	179	4.5%	362	18.3%	224	18.3%	430	26.9%	1'195	13.6%	1'147	1'388	121%
14.05.2012	242	6.1%	422	21.4%	278	22.7%	500	31.3%	1'442	16.4%	1'242	1'448	117%
21.05.2012	302	7.6%	455	23.0%	311	25.4%	520	32.5%	1'588	18.1%	1'318	1'175	89%
28.05.2012	402	10.1%	571	28.9%	386	31.5%	577	36.1%	1'936	22.1%	1'333	1'300	98%
04.06.2012	596	15.0%	688	34.8%	482	39.3%	641	40.1%	2'407	27.4%	1'415	1'553	110%
11.06.2012	866	21.8%	867	43.9%	646	52.7%	761	47.6%	3'140	35.8%	1'518	2'071	136%
18.06.2012	1'013	25.5%	988	50.0%	739	60.3%	807	50.4%	3'547	40.4%	1'533	1'868	122%
25.06.2012	1'366	34.3%	1'148	58.1%	848	69.2%	916	57.3%	4'278	48.8%	1'507	1'660	110%

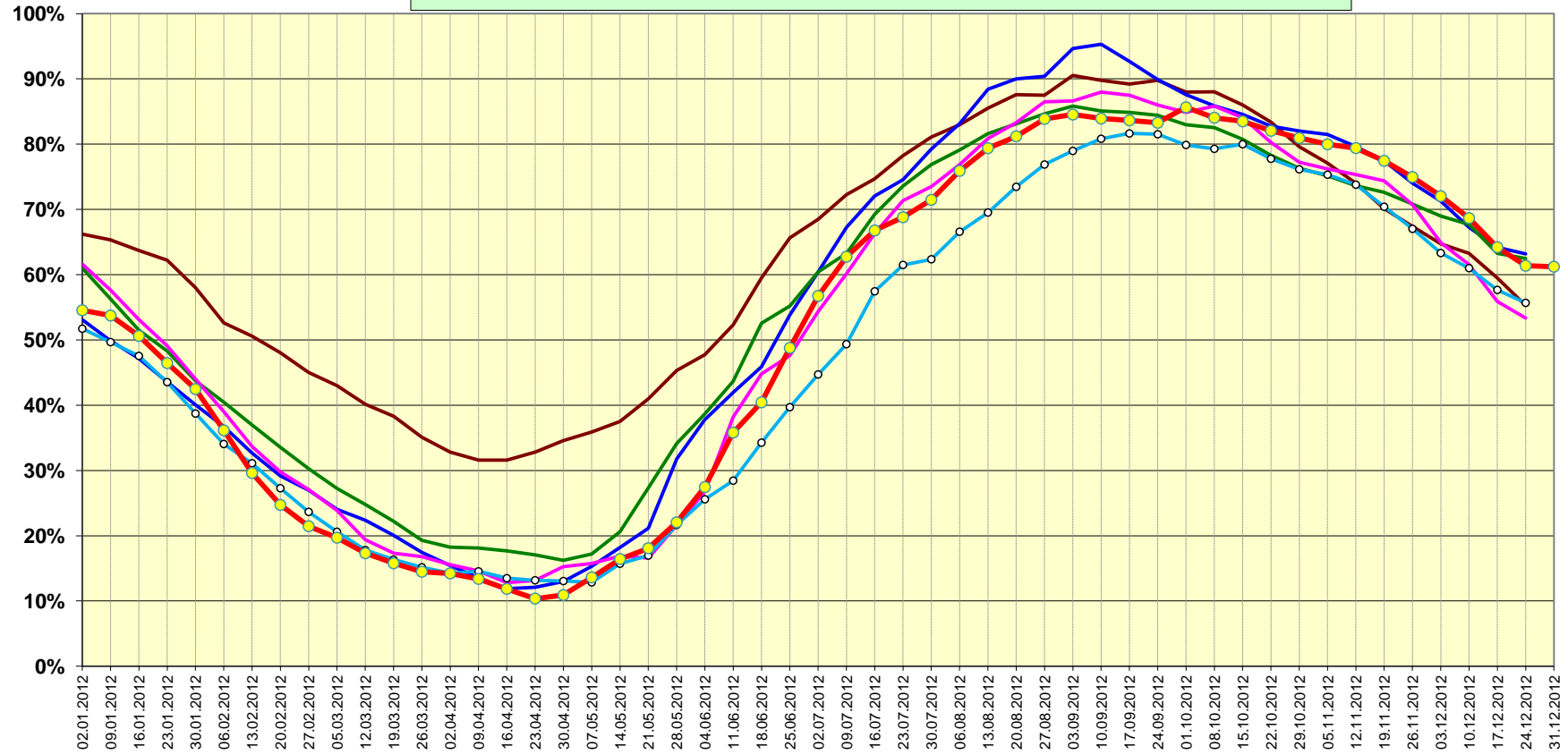
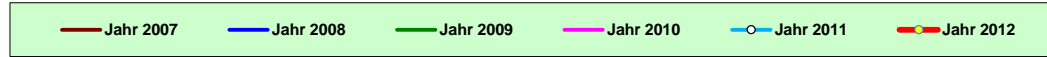
2012	Speicherinhalt - Contenu des bassins d'accumulation										Rhein in Rheinfelden - Rhin à Rheinfelden		
	Wallis - Valais		Graubünden - Grisons		Tessin - Tessin		Übrige CH - Reste CH		Total Schweiz- Suisse		Langjähriger Tagesmittelwert Moyenne journalière de longue date m³/s / 1933-2010	Aufgetretene Wasserführung Débit effectif m³/s / 12:00h	
	GWh	%	GWh	%	GWh	%	GWh	%	GWh	%			%
Montag / Lundi 00:00h	3'980		1'975		1'225		1'590		8'770				
02.07.2012	1'749	43.9%	1'240	62.8%	929	75.8%	1'058	66.1%	4'976	56.7%	1'481	1'914	129%
09.07.2012	2'057	51.7%	1'321	66.9%	989	80.7%	1'136	71.0%	5'503	62.7%	1'464	1'433	98%
16.07.2012	2'330	58.5%	1'363	69.0%	1'003	81.9%	1'160	72.5%	5'856	66.8%	1'449	1'241	86%
23.07.2012	2'501	62.8%	1'369	69.3%	996	81.3%	1'168	73.0%	6'034	68.8%	1'388	1'009	73%
30.07.2012	2'679	67.3%	1'395	70.6%	994	81.1%	1'199	74.9%	6'267	71.5%	1'296	966	75%
06.08.2012	2'965	74.5%	1'423	72.1%	1'001	81.7%	1'268	79.3%	6'657	75.9%	1'228	945	77%
13.08.2012	3'176	79.8%	1'451	73.5%	1'019	83.2%	1'316	82.3%	6'962	79.4%	1'262	839	66%
20.08.2012	3'353	84.2%	1'446	73.2%	987	80.6%	1'335	83.4%	7'121	81.2%	1'179	804	68%
27.08.2012	3'479	87.4%	1'482	75.0%	1'009	82.4%	1'385	86.6%	7'355	83.9%	1'162	1'016	87%
03.09.2012	3'496	87.8%	1'501	76.0%	1'016	82.9%	1'401	87.6%	7'414	84.5%	1'103	1'607	146%
10.09.2012	3'513	88.3%	1'478	74.8%	1'004	82.0%	1'365	85.3%	7'360	83.9%	1'044	945	91%
17.09.2012	3'558	89.4%	1'434	72.6%	973	79.4%	1'371	86.2%	7'336	83.6%	1'030	980	95%
24.09.2012	3'578	89.9%	1'390	70.4%	951	77.6%	1'384	87.0%	7'303	83.3%	972	1'160	119%
01.10.2012	3'571	89.7%	1'493	75.6%	1'038	84.7%	1'409	88.6%	7'511	85.6%	928	1'131	122%
08.10.2012	3'536	88.8%	1'429	72.4%	1'027	83.8%	1'379	86.7%	7'371	84.0%	923	1'117	121%
15.10.2012	3'529	88.7%	1'355	68.6%	1'006	82.1%	1'432	90.1%	7'322	83.5%	859	2'008	234%
22.10.2012	3'466	87.1%	1'320	66.8%	1'002	81.8%	1'407	88.5%	7'195	82.0%	815	1'233	151%
29.10.2012	3'399	85.4%	1'324	67.0%	995	81.2%	1'380	86.8%	7'098	80.9%	817	1'073	131%
05.11.2012	3'331	83.7%	1'325	67.1%	979	79.9%	1'379	86.7%	7'014	80.0%	797	1'721	216%
12.11.2012	3'262	82.0%	1'341	67.9%	976	79.7%	1'384	87.0%	6'963	79.4%	804	1'713	213%
19.11.2012	3'156	79.3%	1'327	67.2%	963	78.6%	1'346	84.7%	6'792	77.4%	857	1'045	122%
26.11.2012	3'054	76.7%	1'299	65.8%	925	75.5%	1'296	81.5%	6'574	75.0%	834	832	100%
03.12.2012	2'902	72.9%	1'261	63.8%	912	74.4%	1'242	78.1%	6'317	72.0%	816	916	112%
10.12.2012	2'767	69.5%	1'199	60.7%	862	70.4%	1'194	75.1%	6'022	68.7%	828	1'002	121%
17.12.2012	2'602	65.4%	1'127	57.1%	802	65.5%	1'100	69.2%	5'631	64.2%	818	1'930	236%
24.12.2012	2'479	62.3%	1'074	54.4%	748	61.1%	1'077	67.7%	5'378	61.3%	808	2'071	256%
31.12.2012	2'434	61.2%	1'069	54.1%	733	59.8%	1'133	71.3%	5'369	61.2%	774	1'637	211%



Schweizerische Eidgenossenschaft
Confédération suisse
Confederazione Svizzera
Confederaziun svizra

Speicherinhalt Schweiz (100% = 8'770 GWh)

Bundesamt für Energie BFE
Office fédéral de l'énergie OFEN



Verlauf des Speicherinhalts 2011/2012 (Stand Ende Monat)

(Schwankungsbreite hoch / tief 1972/73 bis 2011/12)

100% = 8'770 GWh

Bundesamt für Energie BFE
 Office fédéral de l'énergie OFEN

