

2011	Speicherinhalt - Contenu des bassins d'accumulation										Rhein in Rheinfelden - Rhin à Rheinfelden		
	Wallis - Valais		Graubünden - Grisons		Tessin - Tessin		Übrige CH - Reste CH		Total Schweiz - Suisse		Interpolierter Mittelwert Moyenne interpolée	Aufgetretene Wasserführung Débit effectif	
	GWh 3'980	%	GWh 1'975	%	GWh 1'225	%	GWh 1'600	%	GWh 8'780	%	m³/s / 1935-2009	m³/s / 12.00h	%
Montag / Lundi 00:00h													
03.01.2011	1'686	42.4%	1'171	59.6%	695	57.0%	981	61.3%	4'533	51.7%	788	535	68%
10.01.2011	1'569	39.4%	1'142	58.1%	662	54.3%	980	61.3%	4'353	49.6%	779	853	110%
17.01.2011	1'477	37.1%	1'108	56.4%	623	51.1%	960	60.0%	4'168	47.5%	775	832	107%
24.01.2011	1'322	33.2%	1'013	51.6%	573	47.0%	908	56.8%	3'816	43.5%	786	610	78%
31.01.2011	1'099	27.6%	907	46.2%	529	43.4%	859	53.7%	3'394	38.7%	796	495	62%
07.02.2011	902	22.7%	809	41.2%	481	39.4%	793	49.6%	2'985	34.0%	807	426	53%
14.02.2011	781	19.6%	743	37.8%	458	37.5%	745	46.6%	2'727	31.1%	817	441	54%
21.02.2011	618	15.5%	656	33.4%	432	35.4%	685	42.8%	2'391	27.2%	833	441	53%
28.02.2011	466	11.7%	578	29.4%	389	31.9%	640	40.0%	2'073	23.6%	850	482	57%
07.03.2011	362	9.1%	503	25.6%	349	28.6%	592	37.0%	1'806	20.6%	866	421	49%
14.03.2011	278	7.0%	431	21.9%	304	24.9%	548	34.3%	1'561	17.8%	883	408	46%
21.03.2011	227	5.7%	371	18.9%	283	23.2%	551	34.4%	1'432	16.3%	916	468	51%
28.03.2011	199	5.0%	335	17.0%	252	20.7%	543	33.9%	1'329	15.1%	952	428	45%
04.04.2011	187	4.7%	303	15.3%	227	18.6%	535	33.4%	1'252	14.3%	988	495	50%
11.04.2011	201	5.1%	325	16.5%	233	19.1%	517	32.3%	1'276	14.5%	1'024	468	46%
18.04.2011	195	4.9%	304	15.4%	208	17.0%	477	29.8%	1'184	13.5%	1'066	448	42%
25.04.2011	199	5.0%	305	15.4%	187	15.3%	465	29.1%	1'156	13.2%	1'116	408	37%
02.05.2011	207	5.2%	327	16.6%	177	14.4%	435	27.2%	1'146	13.1%	1'165	428	37%
09.05.2011	209	5.3%	323	16.4%	180	14.7%	416	26.0%	1'128	12.8%	1'215	408	34%
16.05.2011	284	7.1%	409	20.7%	232	18.9%	454	28.4%	1'379	15.7%	1'265	522	41%
23.05.2011	322	8.1%	452	22.9%	254	20.7%	461	28.8%	1'489	17.0%	1'319	421	32%
30.05.2011	464	11.7%	592	30.0%	320	26.1%	525	32.8%	1'901	21.7%	1'373	631	46%
06.06.2011	602	15.1%	700	35.4%	361	29.5%	583	36.4%	2'246	25.6%	1'427	755	53%
13.06.2011	696	17.5%	790	40.0%	404	33.0%	607	37.9%	2'497	28.4%	1'482	755	51%
20.06.2011	887	22.3%	931	47.1%	479	39.1%	711	44.4%	3'008	34.3%	1'485	1'110	75%
27.06.2011	1'108	27.8%	1'048	53.1%	545	44.5%	784	49.0%	3'485	39.7%	1'467	945	64%

## WOCHENBERICHT

## BULLETIN HEBDOMADAIRE

Bundesamt für Energie BFE  
 Office fédéral de l'énergie OFEN

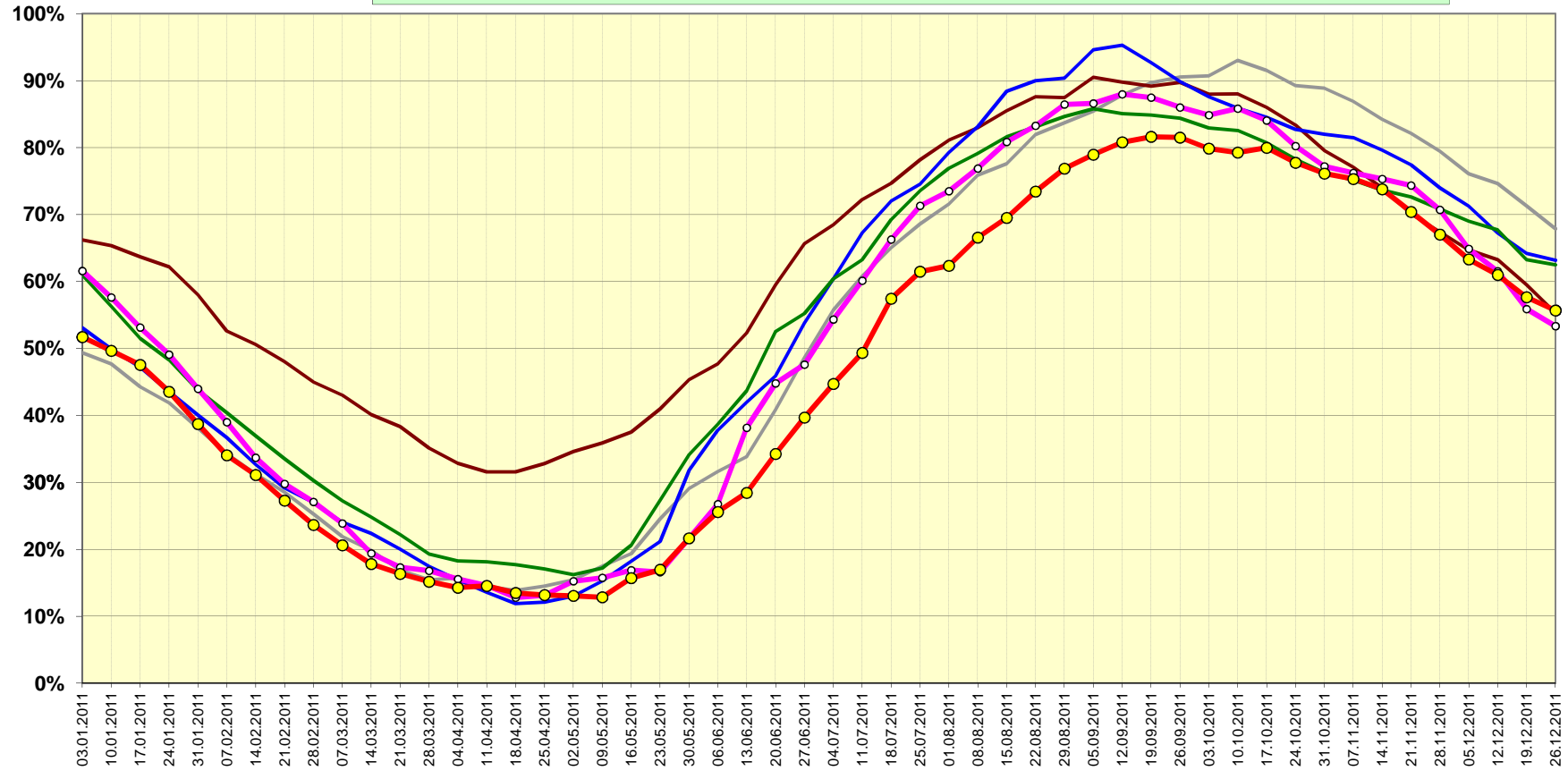
### SPEICHERINHALT

### CONTENU DES BASSINS D'ACCUMULATION

2011	Speicherinhalt - Contenu des bassins d'accumulation										Rhein in Rheinfelden - Rhin à Rheinfelden		
	Wallis - Valais		Graubünden - Grisons		Tessin - Tessin		Übrige CH - Reste CH		Total Schweiz - Suisse		Interpolierter	Aufgetretene	
	GWh	%	GWh	%	GWh	%	GWh	%	GWh	%	Mittelwert	Wasserführung	
	3'980		1'975		1'225		1'600		8'780		Moyenne interpolée	Débit effectif	%
										m³/s / 1935-2009	m³/s / 12.00h		
Montag / Lundi													
00:00h													
04.07.2011	1'383	34.7%	1'114	56.4%	562	45.9%	867	54.2%	3'926	44.7%	1'450	1'023	71%
11.07.2011	1'637	41.1%	1'185	60.0%	601	49.1%	910	56.9%	4'333	49.4%	1'433	1'182	82%
18.07.2011	1'950	49.0%	1'323	67.0%	724	59.1%	1'047	65.4%	5'044	57.4%	1'402	1'314	94%
25.07.2011	2'048	51.5%	1'428	72.3%	816	66.6%	1'107	69.2%	5'399	61.5%	1'354	1'576	116%
01.08.2011	2'149	54.0%	1'420	71.9%	815	66.5%	1'091	68.2%	5'475	62.4%	1'306	1'219	93%
08.08.2011	2'402	60.4%	1'457	73.8%	836	68.2%	1'151	71.9%	5'846	66.6%	1'258	1'292	103%
15.08.2011	2'600	65.3%	1'480	74.9%	850	69.4%	1'174	73.2%	6'104	69.5%	1'020	1'168	115%
22.08.2011	2'898	72.8%	1'477	74.8%	830	67.8%	1'245	77.6%	6'450	73.5%	1'167	943	81%
29.08.2011	3'157	79.3%	1'459	73.9%	832	67.9%	1'302	81.4%	6'750	76.9%	1'124	916	81%
05.09.2011	3'334	83.8%	1'443	73.1%	826	67.4%	1'330	83.1%	6'933	79.0%	1'081	1'153	107%
12.09.2011	3'414	85.8%	1'462	74.0%	833	68.0%	1'387	86.7%	7'096	80.8%	1'038	811	78%
19.09.2011	3'510	88.2%	1'453	73.6%	818	66.8%	1'387	86.7%	7'168	81.6%	999	1'002	100%
26.09.2011	3'499	87.9%	1'455	73.7%	823	67.2%	1'380	86.3%	7'157	81.5%	961	755	79%
03.10.2011	3'470	87.2%	1'394	70.6%	801	65.4%	1'348	84.3%	7'013	79.9%	923	631	68%
10.10.2011	3'477	87.4%	1'355	68.6%	773	63.1%	1'356	84.8%	6'961	79.3%	886	1'030	116%
17.10.2011	3'505	88.1%	1'339	67.8%	768	62.7%	1'411	88.2%	7'023	80.0%	857	1'030	120%
24.10.2011	3'447	86.6%	1'301	65.9%	720	58.8%	1'359	84.9%	6'827	77.8%	849	783	92%
31.10.2011	3'368	84.6%	1'288	65.2%	705	57.6%	1'324	82.8%	6'685	76.1%	842	631	75%
07.11.2011	3'272	82.2%	1'306	66.1%	727	59.3%	1'308	81.8%	6'613	75.3%	835	563	67%
14.11.2011	3'153	79.2%	1'300	65.8%	740	60.4%	1'286	80.4%	6'479	73.8%	827	529	64%
21.11.2011	2'998	75.3%	1'263	63.9%	701	57.2%	1'220	76.3%	6'182	70.4%	824	502	61%
28.11.2011	2'849	71.6%	1'203	60.9%	673	54.9%	1'160	72.5%	5'885	67.0%	821	462	56%
05.12.2011	2'658	66.8%	1'145	58.0%	637	52.0%	1'120	70.0%	5'560	63.3%	818	720	88%
12.12.2011	2'529	63.5%	1'115	56.5%	615	50.2%	1'097	68.6%	5'356	61.0%	815	762	93%
19.12.2011	2'337	58.7%	1'063	53.8%	588	48.0%	1'075	67.2%	5'063	57.7%	809	1'002	124%
26.12.2011	2'238	56.2%	1'025	51.9%	565	46.1%	1'061	66.3%	4'889	55.7%	799	1'074	134%

## Speicherinhalt Schweiz (100% = 8'780 GWh)

Bundesamt für Energie BFE  
Office fédéral de l'énergie OFEN



### Verlauf des Speicherinhalts 2010/2011 (Stand Ende Monat) (Schwankungsbreite hoch / tief 1972/73 bis 2010/11)

100% = 8'780 GWh

Bundesamt für Energie BFE  
Office fédéral de l'énergie OFEN

