

2010	Speicherinhalt - Contenu des bassins d'accumulation										Rhein in Rheinfelden - Rhin à Rheinfelden		
	Wallis - Valais		Graubünden - Grisons		Tessin - Tessin		Übrige CH - Reste CH		Total Schweiz - Suisse		Interpolierter Mittelwert Moyenne interpolée	Aufgetretene Wasserführung Débit effective	
	GWh	%	GWh	%	GWh	%	GWh	%	GWh	%	m³/s / 1935-2008	m³/s / 12.00h	%
Montag / Lundi 00:00h													
04.01.2010	2'478	62.3%	1'261	64.2%	616	50.5%	1'043	65.2%	5'398	61.6%	787	1'089	138%
11.01.2010	2'328	58.5%	1'179	60.0%	583	47.8%	962	60.1%	5'052	57.6%	778	807	104%
18.01.2010	2'134	53.6%	1'088	55.4%	539	44.2%	897	56.1%	4'658	53.1%	778	744	96%
25.01.2010	1'958	49.2%	1'001	50.9%	503	41.2%	841	52.6%	4'303	49.1%	789	641	81%
01.02.2010	1'742	43.8%	893	45.4%	460	37.7%	760	47.5%	3'855	44.0%	800	600	75%
08.02.2010	1'496	37.6%	806	41.0%	435	35.7%	681	42.6%	3'418	39.0%	811	725	89%
15.02.2010	1'288	32.4%	680	34.6%	416	34.1%	569	35.6%	2'953	33.7%	891	573	64%
22.02.2010	1'088	27.3%	606	30.8%	402	33.0%	514	32.1%	2'610	29.8%	838	627	75%
01.03.2010	952	23.9%	549	27.9%	387	31.7%	486	30.4%	2'374	27.1%	853	999	117%
08.03.2010	809	20.3%	467	23.8%	366	30.0%	450	28.1%	2'092	23.9%	869	627	72%
15.03.2010	612	15.4%	375	19.1%	322	26.4%	391	24.4%	1'700	19.4%	1'028	532	52%
22.03.2010	512	12.9%	327	16.6%	295	24.2%	383	23.9%	1'517	17.3%	920	917	100%
29.03.2010	449	11.3%	320	16.3%	289	23.7%	414	25.9%	1'472	16.8%	956	1'067	112%
05.04.2010	404	10.2%	298	15.2%	268	22.0%	393	24.6%	1'363	15.6%	992	807	81%
12.04.2010	364	9.1%	280	14.2%	255	20.9%	380	23.8%	1'279	14.6%	1'028	757	74%
19.04.2010	317	8.0%	251	12.8%	208	17.0%	345	21.6%	1'121	12.8%	1'072	627	59%
26.04.2010	290	7.3%	273	13.9%	213	17.5%	376	23.5%	1'152	13.1%	1'122	654	58%
03.05.2010	293	7.4%	343	17.5%	266	21.8%	434	27.1%	1'336	15.2%	1'172	1'231	105%
10.05.2010	250	6.3%	390	19.8%	302	24.8%	439	27.4%	1'381	15.8%	1'222	1'056	86%
17.05.2010	243	6.1%	429	21.8%	332	27.2%	476	29.8%	1'480	16.9%	1'274	1'209	95%
24.05.2010	231	5.8%	429	21.8%	343	28.1%	450	28.1%	1'453	16.6%	1'328	893	67%
31.05.2010	336	8.4%	567	28.9%	438	35.9%	555	34.7%	1'896	21.6%	1'382	1'661	120%
07.06.2010	461	11.6%	686	34.9%	537	44.0%	661	41.3%	2'345	26.8%	1'437	1'699	118%
14.06.2010	814	20.5%	973	49.5%	745	61.1%	813	50.8%	3'345	38.2%	1'491	1'555	104%
21.06.2010	1'049	26.4%	1'111	56.5%	869	71.2%	898	56.1%	3'927	44.8%	1'484	2'031	137%
28.06.2010	1'202	30.2%	1'169	59.5%	902	73.9%	899	56.2%	4'172	47.6%	1'466	1'252	85%

2010	Speicherinhalt - Contenu des bassins d'accumulation										Rhein in Rheinfelden - Rhin à Rheinfelden			
	Wallis - Valais		Graubünden - Grisons		Tessin - Tessin		Übrige CH - Reste CH		Total Schweiz- Suisse		Interpolierter	Aufgetretene		
	GWh	%	GWh	%	GWh	%	GWh	%	GWh	%	Mittelwert	Wasserführung		
	3'980		1'965		1'220		1'600		8'765		Moyenne interpolée	Débit effective	%	
											m³/s / 1935-2008	m³/s / 12.00h		
Montag / Lundi														
00:00h														
05.07.2010	1'533	38.5%	1'294	65.9%	960	78.7%	976	61.0%	4'763	54.3%	1'448	1'199	83%	
12.07.2010	1'869	47.0%	1'378	70.1%	988	81.0%	1'036	64.8%	5'271	60.1%	1'431	1'010	71%	
19.07.2010	2'216	55.7%	1'453	73.9%	1'003	82.2%	1'138	71.1%	5'810	66.3%	1'396	1'021	73%	
26.07.2010	2'522	63.4%	1'502	76.4%	1'012	83.0%	1'216	76.0%	6'252	71.3%	1'348	1'283	95%	
02.08.2010	2'661	66.9%	1'524	77.6%	996	81.6%	1'262	78.9%	6'443	73.5%	1'300	1'708	131%	
09.08.2010	2'843	71.4%	1'584	80.6%	995	81.6%	1'318	82.4%	6'740	76.9%	1'252	1'755	140%	
16.08.2010	3'050	76.6%	1'664	84.7%	1'023	83.9%	1'351	84.4%	7'088	80.9%	1'205	1'931	160%	
23.08.2010	3'200	80.4%	1'698	86.4%	1'037	85.0%	1'365	85.3%	7'300	83.3%	1'163	1'452	125%	
30.08.2010	3'425	86.1%	1'707	86.9%	1'039	85.2%	1'408	88.0%	7'579	86.5%	1'121	1'661	148%	
06.09.2010	3'462	87.0%	1'709	87.0%	1'027	84.2%	1'394	87.1%	7'592	86.6%	1'079	1'366	127%	
13.09.2010	3'511	88.2%	1'752	89.2%	1'060	86.9%	1'389	86.8%	7'712	88.0%	1'037	1'397	135%	
20.09.2010	3'525	88.6%	1'726	87.8%	1'040	85.2%	1'378	86.1%	7'669	87.5%	998	964	97%	
27.09.2010	3'432	86.2%	1'716	87.3%	1'018	83.4%	1'373	85.8%	7'539	86.0%	960	1'263	132%	
04.10.2010	3'403	85.5%	1'693	86.2%	1'002	82.1%	1'341	83.8%	7'439	84.9%	922	975	106%	
11.10.2010	3'404	85.5%	1'733	88.2%	1'046	85.7%	1'341	83.8%	7'524	85.8%	885	732	83%	
18.10.2010	3'342	84.0%	1'704	86.7%	1'018	83.4%	1'305	81.6%	7'369	84.1%	860	732	85%	
25.10.2010	3'178	79.8%	1'642	83.6%	966	79.2%	1'248	78.0%	7'034	80.3%	852	917	108%	
01.11.2010	3'011	75.7%	1'603	81.6%	921	75.5%	1'233	77.1%	6'768	77.2%	844	744	88%	
08.11.2010	2'942	73.9%	1'601	81.5%	898	73.6%	1'241	77.6%	6'682	76.2%	836	693	83%	
15.11.2010	2'858	71.8%	1'590	80.9%	887	72.7%	1'268	79.3%	6'603	75.3%	811	856	105%	
22.11.2010	2'759	69.3%	1'593	81.1%	903	74.0%	1'263	78.9%	6'518	74.4%	824	844	102%	
29.11.2010	2'595	65.2%	1'514	77.0%	883	72.4%	1'207	75.4%	6'199	70.7%	821	757	92%	
06.12.2010	2'340	58.8%	1'408	71.7%	832	68.2%	1'108	69.3%	5'688	64.9%	817	881	108%	
13.12.2010	2'135	53.6%	1'358	69.1%	792	64.9%	1'110	69.4%	5'395	61.6%	813	1'199	147%	
20.12.2010	1'887	47.4%	1'253	63.8%	744	61.0%	1'015	63.4%	4'899	55.9%	806	1'010	125%	
27.12.2010	1'771	44.5%	1'202	61.2%	715	58.6%	988	61.8%	4'676	53.3%	797	917	115%	

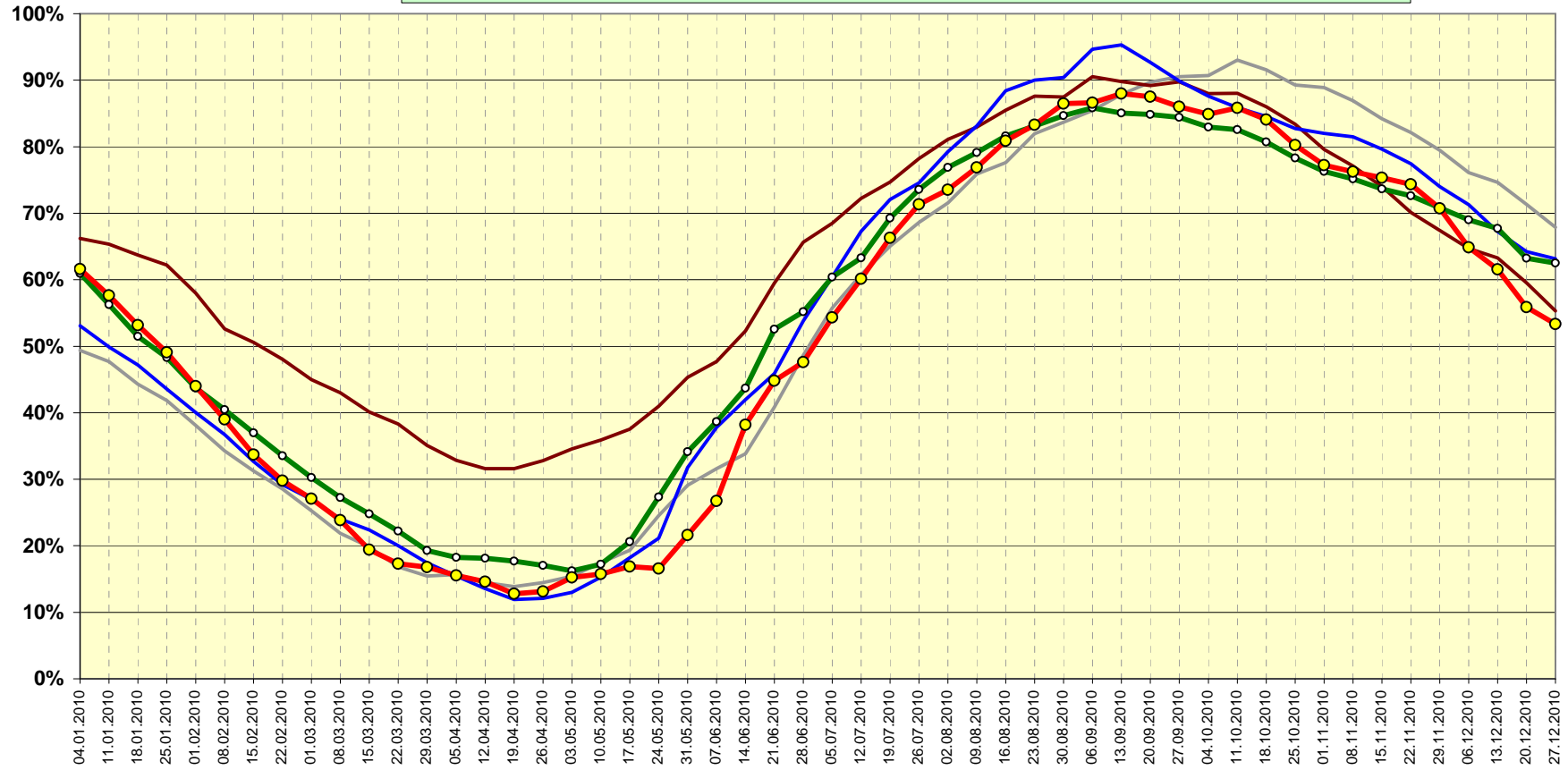


Schweizerische Eidgenossenschaft  
Confédération suisse  
Confederazione Svizzera  
Confederaziun svizra

Bundesamt für Energie BFE  
Office fédéral de l'énergie OFEN

## Speicherinhalt Schweiz (100% = 8'765 GWh)

Jahr 2006    Jahr 2007    Jahr 2008    Jahr 2009    Jahr 2010





Schweizerische Eidgenossenschaft  
Confédération suisse  
Confederazione Svizzera  
Confederaziun svizra

## Verlauf des Speicherinhalts 2009/2010 (Stand Ende Monat)

(Schwankungsbreite hoch / tief 1972/73 bis 2009/10)

100% = 8'765 GWh

Bundesamt für Energie BFE  
Office fédéral de l'énergie OFEN

