

2006	Speicherinhalt - Contenu des bassins d'accumulation										Rhein in Rheinfelden - Rhin à Rheinfelden		
	Wallis - Valais		Graubünden - Grisons		Tessin - Tessin		Übrige CH - Reste CH		Total Schweiz- Suisse		Interpolierter	Aufgetretene	
	GWh	%	GWh	%	GWh	%	GWh	%	GWh	%	Mittelwert	Wasserführung	
	3'755		1'960		1'225		1'600		8'540		Moyenne	Débit	%
										interpolée	effective		
										m <sup>3</sup> /s / 1935-2003	m <sup>3</sup> /s / 12:00h		
Montag / Lundi 00:00h													
02.01.2006	2'061	54.9%	870	44.4%	454	37.1%	830	51.9%	4'215	49.4%	795	612	77%
09.01.2006	1'967	52.4%	848	43.3%	445	36.3%	813	50.8%	4'073	47.7%	784	420	54%
16.01.2006	1'828	48.7%	787	40.2%	420	34.3%	747	46.7%	3'782	44.3%	777	376	48%
23.01.2006	1'710	45.5%	754	38.5%	404	33.0%	707	44.2%	3'575	41.9%	790	465	59%
30.01.2006	1'559	41.5%	678	34.6%	369	30.1%	647	40.4%	3'253	38.1%	803	387	48%
06.02.2006	1'383	36.8%	608	31.0%	343	28.0%	592	37.0%	2'926	34.3%	815	376	46%
13.02.2006	1'237	32.9%	556	28.4%	318	26.0%	558	34.9%	2'669	31.3%	828	349	42%
20.02.2006	1'098	29.2%	511	26.1%	287	23.4%	542	33.9%	2'438	28.5%	841	730	87%
27.02.2006	970	25.8%	446	22.8%	254	20.7%	489	30.6%	2'159	25.3%	853	519	61%
06.03.2006	836	22.3%	377	19.2%	220	18.0%	436	27.3%	1'869	21.9%	866	723	83%
13.03.2006	736	19.6%	343	17.5%	199	16.2%	416	26.0%	1'694	19.8%	878	1'047	119%
20.03.2006	624	16.6%	293	14.9%	167	13.6%	354	22.1%	1'438	16.8%	906	618	68%
27.03.2006	533	14.2%	269	13.7%	154	12.6%	364	22.8%	1'320	15.5%	940	1'442	153%
03.04.2006	498	13.3%	269	13.7%	150	12.2%	422	26.4%	1'339	15.7%	973	1'781	183%
10.04.2006	453	12.1%	250	12.8%	142	11.6%	391	24.4%	1'236	14.5%	1'007	2'977	296%
17.04.2006	407	10.8%	242	12.3%	136	11.1%	398	24.9%	1'183	13.9%	1'046	2'106	201%
24.04.2006	409	10.9%	262	13.4%	144	11.8%	422	26.4%	1'237	14.5%	1'099	1'664	151%
01.05.2006	412	11.0%	295	15.1%	161	13.1%	449	28.1%	1'317	15.4%	1'152	1'615	140%
08.05.2006	447	11.9%	363	18.5%	191	15.6%	492	30.8%	1'493	17.5%	1'205	1'361	113%
15.05.2006	480	12.8%	430	21.9%	215	17.6%	525	32.8%	1'650	19.3%	1'499	1'664	111%
22.05.2006	620	16.5%	577	29.4%	275	22.4%	624	39.0%	2'096	24.5%	1'314	1'764	134%
29.05.2006	741	19.7%	693	35.4%	363	29.6%	687	42.9%	2'484	29.1%	1'370	1'739	127%
05.06.2006	813	21.7%	757	38.6%	397	32.4%	733	45.8%	2'700	31.6%	1'427	1'822	128%
12.06.2006	909	24.2%	807	41.2%	434	35.4%	740	46.3%	2'890	33.8%	1'484	1'242	84%
19.06.2006	1'215	32.4%	945	48.2%	505	41.2%	824	51.5%	3'489	40.9%	1'498	1'313	88%
26.06.2006	1'565	41.7%	1'068	54.5%	572	46.7%	950	59.4%	4'155	48.7%	1'481	1'226	83%

2006	Speicherinhalt - Contenu des bassins d'accumulation										Rhein in Rheinfelden - Rhin à Rheinfelden		
	Wallis - Valais		Graubünden - Grisons		Tessin - Tessin		Übrige CH - Reste CH		Total Schweiz- Suisse		Interpolierter	Aufgetretene	
	GWh	%	GWh	%	GWh	%	GWh	%	GWh	%	Mittelwert	Wasserführung	
3755		1'960		1'225		1'600		8'505			Moyenne	Débit	
	3720 ab 1.10.		1'960		1'225		1'600		8'505		interpolée	effective	
											m³/s / 1935-2003	m³/s / 12:00h	%
Montag / Lundi													
00:00h													
03.07.2006	1'932	51.5%	1'162	59.3%	625	51.0%	1'040	65.0%	4'759	55.7%	1'464	1'109	76%
10.07.2006	2'209	58.8%	1'232	62.9%	662	54.0%	1'088	68.0%	5'191	60.8%	1'446	1'017	70%
17.07.2006	2'475	65.9%	1'268	64.7%	688	56.2%	1'125	70.3%	5'556	65.1%	1'419	863	61%
24.07.2006	2'724	72.5%	1'277	65.2%	695	56.7%	1'165	72.8%	5'861	68.6%	1'367	757	55%
31.07.2006	2'943	78.4%	1'273	64.9%	695	56.7%	1'200	75.0%	6'111	71.6%	1'314	710	54%
07.08.2006	3'100	82.6%	1'346	68.7%	714	58.3%	1'320	82.5%	6'480	75.9%	1'262	1'163	92%
14.08.2006	3'190	85.0%	1'367	69.7%	725	59.2%	1'345	84.1%	6'627	77.6%	1'209	1'500	124%
21.08.2006	3'299	87.9%	1'476	75.3%	831	67.8%	1'395	87.2%	7'001	82.0%	1'167	1'086	93%
28.08.2006	3'368	89.7%	1'522	77.7%	859	70.1%	1'399	87.4%	7'148	83.7%	1'126	1'179	105%
04.09.2006	3'420	91.1%	1'552	79.2%	876	71.5%	1'450	90.6%	7'298	85.5%	1'085	1'218	112%
11.09.2006	3'550	94.5%	1'588	81.0%	887	72.4%	1'478	92.4%	7'503	87.9%	1'043	921	88%
18.09.2006	3'601	95.9%	1'636	83.5%	933	76.2%	1'490	93.1%	7'660	89.7%	1'005	2'190	218%
25.09.2006	3'616	96.3%	1'669	85.2%	957	78.1%	1'491	93.2%	7'733	90.6%	969	1'047	108%
02.10.2006	3'576	96.1%	1'698	86.6%	972	79.3%	1'470	91.9%	7'716	90.7%	934	1'656	177%
09.10.2006	3'616	97.2%	1'780	90.8%	1'027	83.8%	1'490	93.1%	7'913	93.0%	898	1'132	126%
16.10.2006	3'542	95.2%	1'784	91.0%	1'019	83.2%	1'441	90.1%	7'786	91.5%	867	778	90%
23.10.2006	3'437	92.4%	1'765	90.1%	991	80.9%	1'400	87.5%	7'593	89.3%	861	624	72%
30.10.2006	3'374	90.7%	1'790	91.3%	1'001	81.7%	1'395	87.2%	7'560	88.9%	854	586	69%
06.11.2006	3'284	88.3%	1'755	89.5%	983	80.2%	1'371	85.7%	7'393	86.9%	848	501	59%
13.11.2006	3'157	84.9%	1'720	87.8%	951	77.6%	1'334	83.4%	7'162	84.2%	842	586	70%
20.11.2006	3'042	81.8%	1'709	87.2%	926	75.6%	1'307	81.7%	6'984	82.1%	836	612	73%
27.11.2006	2'891	77.7%	1'683	85.9%	905	73.9%	1'280	80.0%	6'759	79.5%	831	549	66%
04.12.2006	2'738	73.6%	1'627	83.0%	869	70.9%	1'240	77.5%	6'474	76.1%	826	561	68%
11.12.2006	2'611	70.2%	1'636	83.5%	868	70.9%	1'232	77.0%	6'347	74.6%	821	1'002	122%
18.12.2006	2'461	66.2%	1'590	81.1%	837	68.3%	1'177	73.6%	6'065	71.3%	814	683	84%
25.12.2006	2'315	62.2%	1'550	79.1%	798	65.1%	1'112	69.5%	5'775	67.9%	805	543	67%

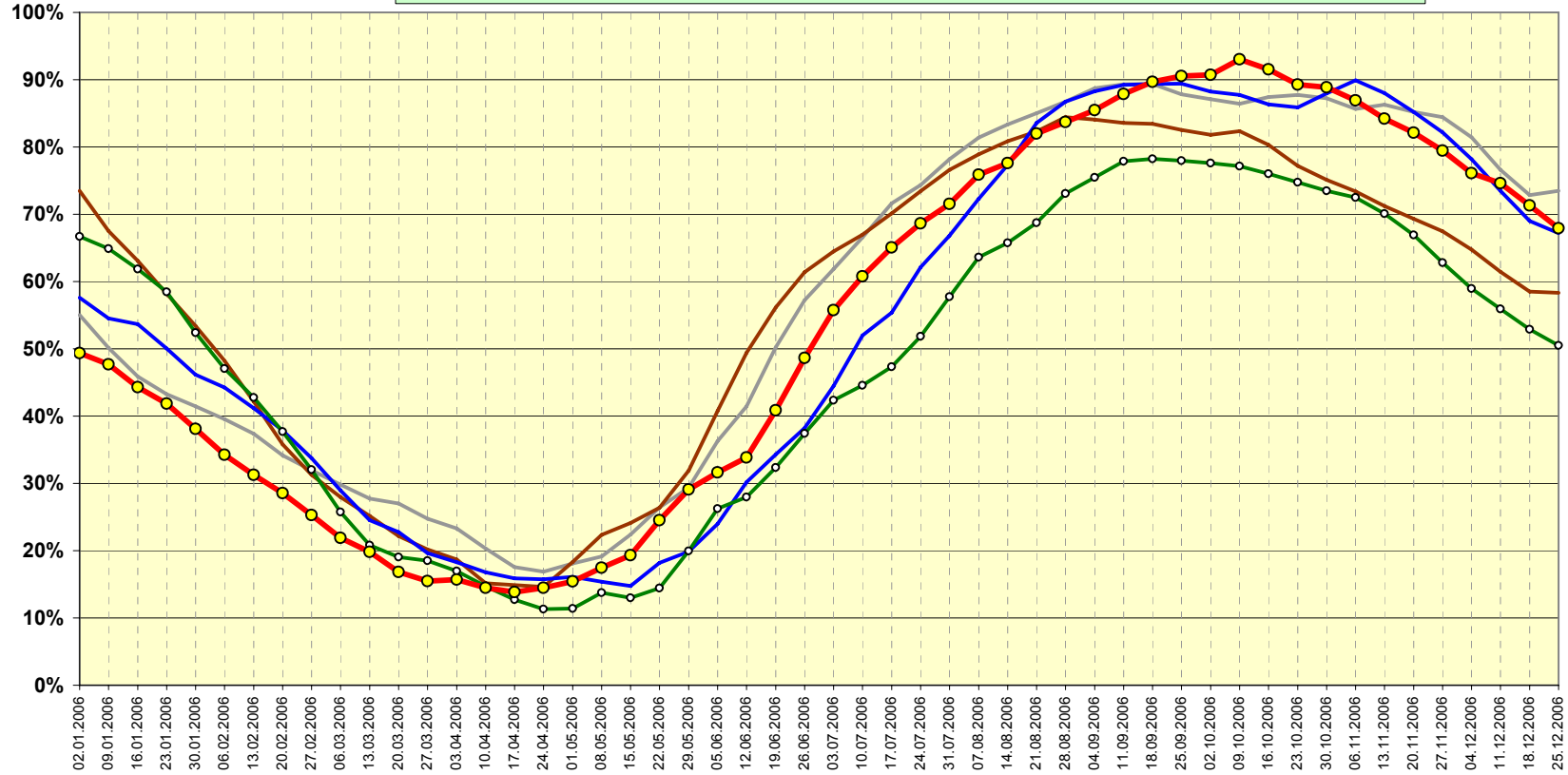


Schweizerische Eidgenossenschaft  
Confédération suisse  
Confederazione Svizzera  
Confederaziun svizra

## Speicherinhalt Schweiz (100% = 8'505 GWh)

Bundesamt für Energie BFE  
Office fédéral de l'énergie OFEN

Jahr 2002    Jahr 2003    Jahr 2004    Jahr 2005    Jahr 2006



### Verlauf des Speicherinhalts 2005/2006 (Stand Ende Monat)

(Schwankungsbreite hoch / tief 1972/73 bis 2005/06)

100% = 8'505 GWh

Bundesamt für Energie BFE  
Office fédéral de l'énergie OFEN

