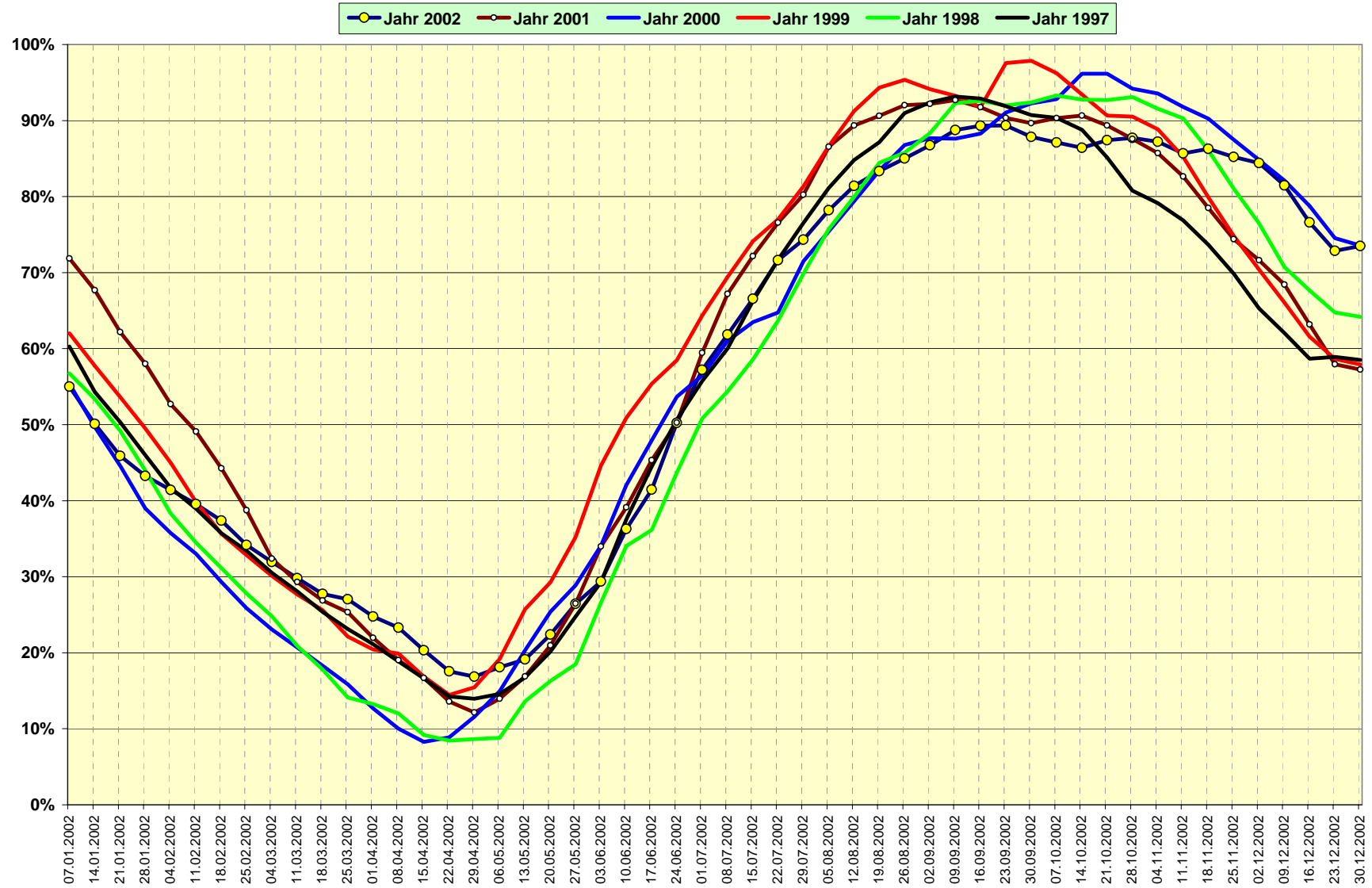


BFE OFEN UFE SFOE	Wasserführung Rhein in Rheinfelden			Speicherinhalt Schweiz in GWh (Speicher Vermögen ab 1.08.2000: 100% = 8'560 GWh)								ab 01.08.2000: 100%=8'560 GWh			
	interpolierter			Wallis		Graubünden		Tessin		übrige Schweiz		100%=8560			
	12:00h in m³/s	Mittelwert (1935-2001)	in %	3'775	in %	1'960	in %	1'225	in %	1'600	in %	Jahr 2002	Jahr 2001	Jahr 2002	Jahr 2001
Mo 00:00h															
07.Jan 02	644	783	82%	2'117	56.1%	1'063	54.2%	561	45.8%	969	60.6%	4'710	6'151	55.0%	71.9%
14.Jan 02	587	773	76%	1'967	52.1%	945	48.2%	505	41.2%	873	54.6%	4'290	5'794	50.1%	67.7%
21.Jan 02	553	783	71%	1'837	48.7%	818	41.7%	465	38.0%	809	50.6%	3'929	5'322	45.9%	62.2%
28.Jan 02	1'068	797	134%	1'734	45.9%	765	39.0%	432	35.3%	772	48.3%	3'703	4'967	43.3%	58.0%
04.Feb 02	668	811	82%	1'658	43.9%	727	37.1%	405	33.1%	757	47.3%	3'547	4'511	41.4%	52.7%
11.Feb 02	849	825	103%	1'571	41.6%	692	35.3%	377	30.8%	746	46.6%	3'386	4'203	39.6%	49.1%
18.Feb 02	620	838	74%	1'472	39.0%	657	33.5%	346	28.2%	724	45.3%	3'199	3'790	37.4%	44.3%
25.Feb 02	995	850	117%	1'351	35.8%	588	30.0%	302	24.7%	685	42.8%	2'926	3'317	34.2%	38.8%
04.Mrz 02	1'163	862	135%	1'240	32.8%	544	27.8%	272	22.2%	678	42.4%	2'734	2'772	31.9%	32.4%
11.Mrz 02	836	874	96%	1'139	30.2%	515	26.3%	252	20.6%	645	40.3%	2'551	2'510	29.8%	29.3%
18.Mrz 02	700	896	78%	1'044	27.7%	488	24.9%	231	18.9%	610	38.1%	2'373	2'301	27.7%	26.9%
25.Mrz 02	1'341	932	144%	978	25.9%	481	24.5%	218	17.8%	636	39.8%	2'313	2'168	27.0%	25.3%
01.Apr 02	836	968	86%	890	23.6%	459	23.4%	185	15.1%	585	36.6%	2'119	1'881	24.8%	22.0%
08.Apr 02	763	1'003	76%	826	21.9%	453	23.1%	168	13.7%	547	34.2%	1'994	1'628	23.3%	19.0%
15.Apr 02	843	1'039	81%	718	19.0%	409	20.9%	135	11.0%	479	29.9%	1'741	1'429	20.3%	16.7%
22.Apr 02	662	1'090	61%	617	16.3%	368	18.8%	109	8.9%	408	25.5%	1'502	1'162	17.5%	13.6%
29.Apr 02	836	1'142	73%	556	14.7%	369	18.8%	101	8.2%	418	26.1%	1'444	1'039	16.9%	12.1%
06.Mai 02	1'545	1'193	130%	526	13.9%	422	21.5%	143	11.7%	459	28.7%	1'550	1'193	18.1%	13.9%
13.Mai 02	1'763	1'244	142%	518	13.7%	472	24.1%	174	14.2%	474	29.6%	1'638	1'446	19.1%	16.9%
20.Mai 02	1'170	1'300	90%	552	14.6%	574	29.3%	233	19.0%	558	34.9%	1'917	1'794	22.4%	21.0%
27.Mai 02	1'388	1'358	102%	628	16.6%	701	35.8%	317	25.9%	617	38.6%	2'263	2'265	26.4%	26.5%
03.Jun 02	1'185	1'415	84%	689	18.3%	791	40.4%	378	30.9%	655	40.9%	2'513	2'908	29.4%	34.0%
10.Jun 02	1'812	1'473	123%	847	22.4%	966	49.3%	517	42.2%	775	48.4%	3'105	3'349	36.3%	39.1%
17.Jun 02	1'412	1'510	94%	1'006	26.6%	1'082	55.2%	612	50.0%	848	53.0%	3'548	3'880	41.4%	45.3%
24.Jun 02	1'530	1'495	102%	1'394	36.9%	1'219	62.2%	721	58.9%	965	60.3%	4'299	4'303	50.2%	50.3%
01.Jul 02	1'296	1'480	88%	1'761	46.6%	1'303	66.5%	777	63.4%	1'057	66.1%	4'898	5'088	57.2%	59.4%
08.Jul 02	1'134	1'465	77%	2'003	53.1%	1'367	69.7%	838	68.4%	1'086	67.9%	5'294	5'752	61.8%	67.2%
15.Jul 02	1'053	1'450	73%	2'206	58.4%	1'441	73.5%	897	73.2%	1'153	72.1%	5'697	6'178	66.6%	72.2%
22.Jul 02	1'365	1'396	98%	2'417	64.0%	1'505	76.8%	944	77.1%	1'266	79.1%	6'132	6'554	71.6%	76.6%
29.Jul 02	995	1'342	74%	2'587	68.5%	1'537	78.4%	958	78.2%	1'282	80.1%	6'364	6'870	74.3%	80.3%
05.Aug 02	946	1'288	73%	2'793	74.0%	1'582	80.7%	972	79.3%	1'347	84.2%	6'694	7'410	78.2%	86.6%
12.Aug 02	2'938	1'234	238%	2'919	77.3%	1'626	83.0%	1'002	81.8%	1'422	88.9%	6'969	7'650	81.4%	89.4%
19.Aug 02	1'537	1'187	129%	3'025	80.1%	1'661	84.7%	1'006	82.1%	1'441	90.1%	7'133	7'758	83.3%	90.6%
26.Aug 02	1'192	1'146	104%	3'172	84.0%	1'661	84.7%	1'007	82.2%	1'437	89.8%	7'277	7'877	85.0%	92.0%
02.Sep 02	1'443	1'104	131%	3'322	88.0%	1'656	84.5%	1'012	82.6%	1'437	89.8%	7'427	7'891	86.8%	92.2%
09.Sep 02	1'126	1'063	106%	3'437	91.0%	1'670	85.2%	1'028	83.9%	1'462	91.4%	7'597	7'935	88.8%	92.7%
16.Sep 02	932	1'022	91%	3'476	92.1%	1'675	85.5%	1'043	85.1%	1'453	90.8%	7'647	7'853	89.3%	91.7%
23.Sep 02	1'272	983	129%	3'507	92.9%	1'649	84.1%	1'031	84.2%	1'463	91.4%	7'650	7'733	89.4%	90.3%
30.Sep 02	1'272	945	135%	3'455	91.5%	1'603	81.8%	1'011	82.5%	1'450	90.6%	7'519	7'674	87.8%	89.6%
07.Okt 02	1'459	906	161%	3'417	90.5%	1'591	81.2%	999	81.6%	1'450	90.6%	7'457	7'731	87.1%	90.3%
14.Okt 02	965	868	111%	3'383	89.6%	1'589	81.1%	987	80.6%	1'438	89.9%	7'397	7'761	86.4%	90.7%
21.Okt 02	1'343	855	157%	3'374	89.4%	1'635	83.4%	1'015	82.9%	1'458	91.1%	7'482	7'648	87.4%	89.3%
28.Okt 02	1'320	848	156%	3'331	88.2%	1'673	85.4%	1'022	83.4%	1'484	92.8%	7'510	7'498	87.7%	87.6%
04.Nov 02	2'234	840	266%	3'287	87.1%	1'680	85.7%	1'011	82.5%	1'489	93.1%	7'467	7'336	87.2%	85.7%
11.Nov 02	2'495	832	300%	3'218	85.2%	1'671	85.3%	989	80.7%	1'455	90.9%	7'333	7'074	85.7%	82.6%
18.Nov 02	2'190	827	265%	3'144	83.3%	1'722	87.9%	1'041	85.0%	1'480	92.5%	7'387	6'721	86.3%	78.5%
25.Nov 02	1'808	825	219%	3'056	81.0%	1'731	88.3%	1'061	86.6%	1'445	90.3%	7'293	6'370	85.2%	74.4%
02.Dez 02	1'575	823	191%	2'945	78.0%	1'756	89.6%	1'089	88.9%	1'436	89.8%	7'226	6'131	84.4%	71.6%
09.Dez 02	1'147	821	140%	2'828	74.9%	1'705	87.0%	1'065	86.9%	1'375	85.9%	6'973	5'856	81.5%	68.4%
16.Dez 02	999	817	122%	2'674	70.8%	1'613	82.3%	1'013	82.7%	1'258	78.6%	6'558	5'409	76.6%	63.2%
23.Dez 02	1'559	807	193%	2'538	67.2%	1'531	78.1%	971	79.3%	1'196	74.8%	6'236	4'960	72.9%	57.9%
30.Dez 02	1'147	796	144%	2'531	67.0%	1'545	78.8%	967	78.9%	1'248	78.0%	6'291	4'899	73.5%	57.2%

Speicherinhalt Schweiz (100% = 8'710 GWh)





Verlauf des Speicherinhalts 2001/2002 (Stand Ende Monat) (Schwankungsbreite 1972/73 bis 2000/01)

